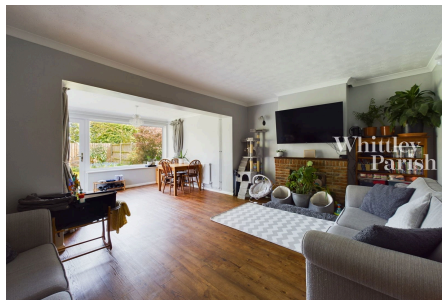




# Broadfields Close, Gislingham

£250,000

3 1 1



Recently upgraded three bedroom semi-detached house with single garage and landscaped garden.

## Key Features

- Ideal for first time buyers
- Recently upgraded
- 3 bedrooms
- Spacious accommodation
- Landscaped rear garden
- Single garage en-bloc
- Sought after village location
- Freehold - EPC Rating E
- Oil Heating - Mains drainage
- Council Tax Band B

