



10 Paget Road, Great Yarmouth

£250,000 Freehold

Just a short walk to the beach & amenities! An elegant four bedroom terraced house with spacious living areas, high ceilings, versatile basement, ensuite, and near beach amenities. Perfect for families needing a wealth of space.

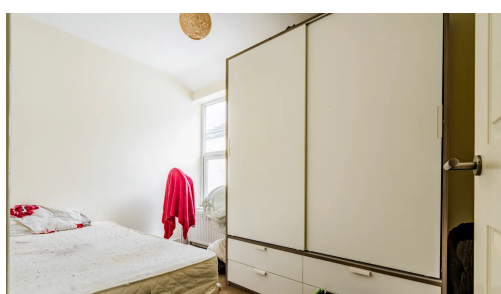
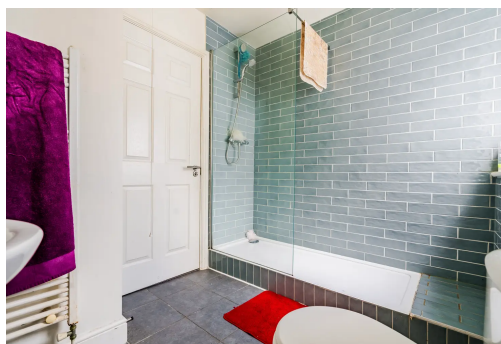
The charm of this historic coastal town is at your doorstep, offering a diverse range of amenities, entertainment options, and cultural attractions. Whether you're exploring the bustling local markets, enjoying a leisurely stroll along the picturesque coastline, or immersing yourself in the town's rich maritime history, Paget Road places you at the heart of it all. With its proximity to local schools, parks, shops, and easy access to transport links, this location presents an ideal balance between vibrant city living and the tranquillity of a coastal retreat.



AGENTS NOTE

We understand the property will be sold freehold and connected and connected to all mains services.

Council tax band - C.

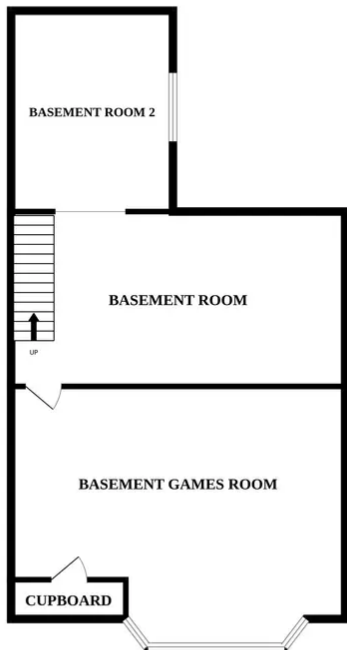


This spacious four-bedroom terraced house presents a rare opportunity to own an elegant residence, just moments away from the beach. Stepping inside, you are welcomed by the generous living spaces, including two reception rooms - one boasting a bay-fronted lounge exuding classic charm. High ceilings throughout the property add to the overall sense of space and elegance. The 600 sqft basement holds potential for a variety of uses (stp) and is currently used as a games room.

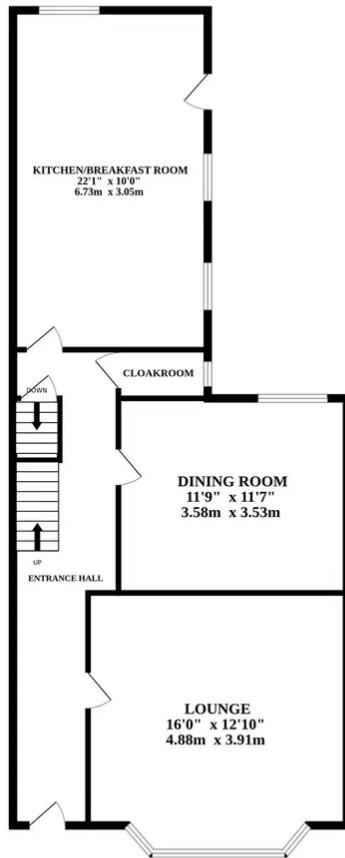
The property features an ensuite in addition to a well-appointed shower room for convenience. The spacious kitchen/breakfast room is ideal for both casual dining and entertaining guests. Situated just a short walk from the beach and local amenities, this home offers a perfect blend of comfort and convenience. With its flawless combination of period features and modern comforts, this property presents an exceptional opportunity for those seeking a home in a sought-after location.



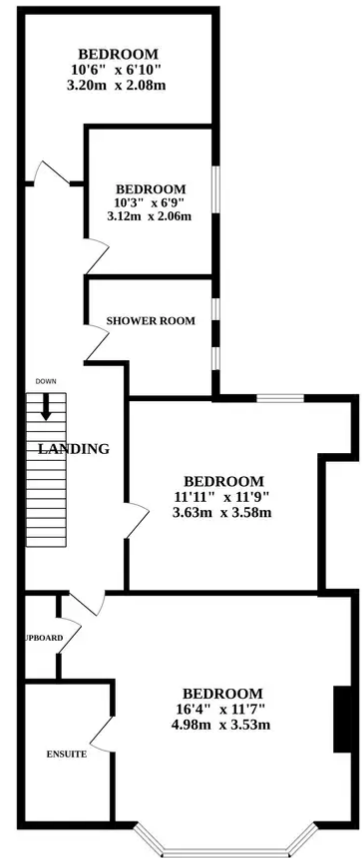
BASEMENT



GROUND FLOOR



1ST FLOOR



Whilst every attempt has been made to ensure the accuracy of the floorplan contained here, measurements of doors, windows, rooms and any other items are approximate and no responsibility is taken for any error, omission or mis-statement. This plan is for illustrative purposes only and should be used as such by any prospective purchaser. The services, systems and appliances shown have not been tested and no guarantee as to their operability or efficiency can be given.
Made with Metropix ©2024

