



Northwood Hall, Highgate, N6

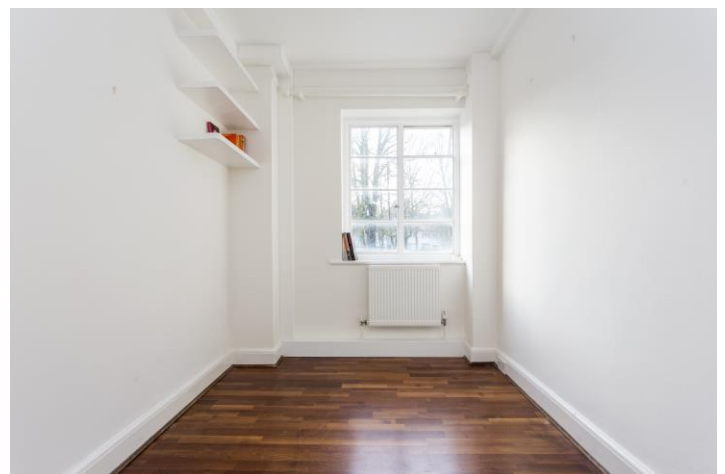
Weekly Rental Of £395



35 topsfield parade, tottenham lane, london, n8 8pt
telephone 020 8341 3336 facsimile 020 8342 7310
email crouchend@litchfields.com litchfields.com
offices also in hampstead garden suburb & highgate

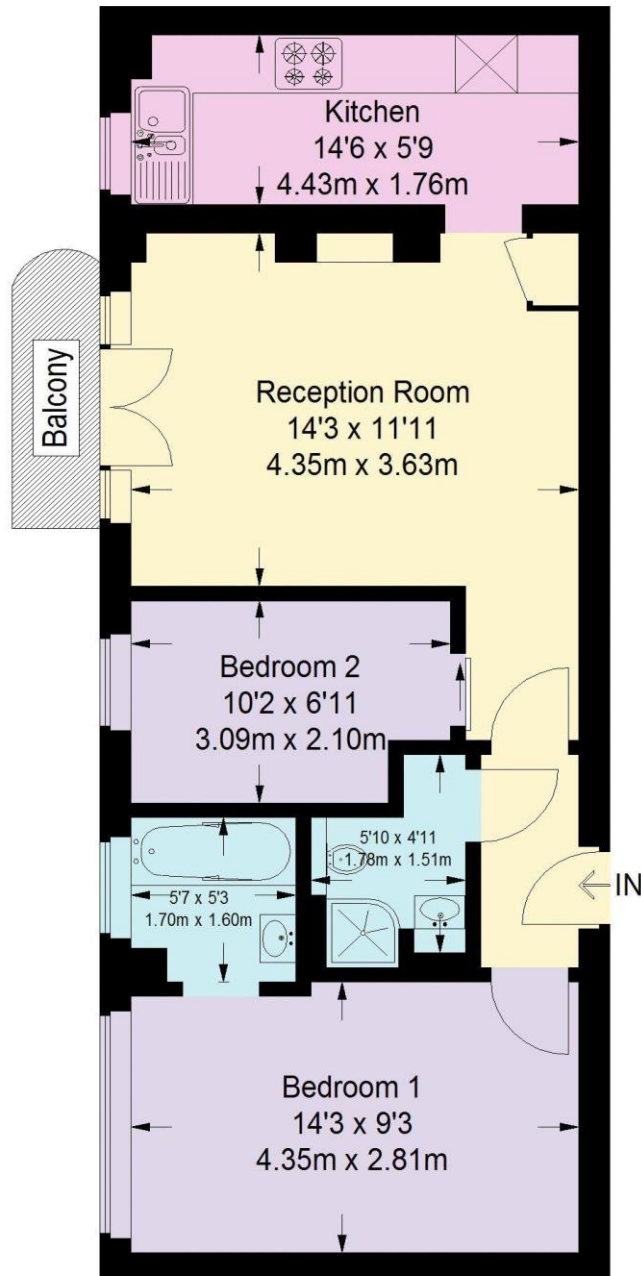
We are pleased to offer this well presented Two bedroom first floor apartment (with lift) within a classic Art Deco 1930s purpose built apartment block. Featuring a reception room with a south facing balcony, two bedrooms, an en suite bathroom to bedroom 1, further bedroom, kitchen and shower room. Further benefits include a resident porter, off street parking, large service lift and communal gardens. Northwood Hall is located along Hornsey Lane, close to transport being equidistant from Highgate and Archway tube stations, it is also on the W5 bus route and is within a half mile of Highgate Village, Waterlow Park and Crouch End Broadway. EPC - D **move in charges of £150 per applicant to include agreement creation and referencing charges. check out costs will also apply.

Great Highgate Location | Reception room with southerly facing balcony | Master Bedroom with en suite bathroom | Bedroom 2 | Kitchen | Shower room | Walnut wood effect floors | Communal Gardens | Lifts | Off street parking | Close to shops (within 500 yards) | within 1/4 of a mile of Highgate and Archway underground stations, Highgate Village, Crouch end and Waterlow Park | on W5 bus route



Northwood Hall, Hornsey Lane

Approximate Gross Internal Area
55.2 sq m / 594 sq ft



First Floor
55.2 sq m / 594 sq ft

Illustration for identification purposes only, measurements are approximate,
not to scale (ID405110)



For full details on all available properties, please visit our website;
www.litchfields.com or call our office on 0208 341 3336