

28 Sea View Rise, Hopton

£425,000 Freehold

GUIDE PRICE: £425,000-£450,000. Introducing this exceptional four-bedroom detached home, offering a unique chance to own a prestigious property that embodies comfort and convenience. This beautiful family residence is located in an exclusive cul-de-sac development consisting of only four homes, offering distant sea views from the first floor. The design provides a spacious and versatile interior that can be customized to your preferences, with well-maintained grounds that offer endless possibilities. Don't miss the opportunity to make this house your home.

Council Tax band: E

Tenure: Freehold

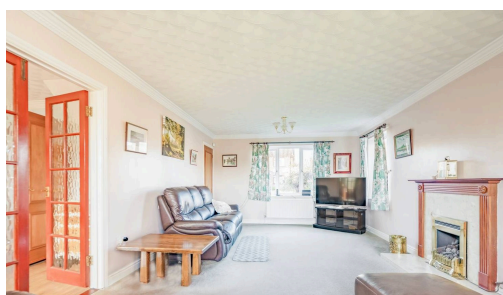
GUIDE PRICE: £425,000-£450,000. Introducing this exceptional four-bedroom detached home, offering a unique chance to own a prestigious property that embodies comfort and convenience. This beautiful family residence is located in an exclusive cul-de-sac development consisting of only four homes, offering distant sea views from the first floor. The design provides a spacious and versatile interior that can be customized to your preferences, with well-maintained grounds that offer endless possibilities. Don't miss the opportunity to make this house your home.

LOCATION

Hopton-on-Sea is a picturesque village and seaside resort nestled along the beautiful south Norfolk coast in England. Situated just 5 miles south of the vibrant town of Great Yarmouth and 3 miles north of the charming town of Lowestoft in Suffolk, Hopton-on-Sea enjoys a prime location, offering easy access to both coastal gems. Hopton-on-Sea is perhaps best known for being the host of the World Indoor Bowls Championships offering a well catered for tourist industry, visitors and locals alike can enjoy the village amenities which include leisure facilities, pubs and



GUIDE PRICE: £425,000-£450,000. Introducing this exceptional four-bedroom detached home, offering a unique chance to own a prestigious property that embodies comfort and convenience. This beautiful family residence is located in an exclusive cul-de-sac development consisting of only four homes, offering distant sea views from the first floor. The design provides a spacious and versatile interior that can be customized to your preferences, with well-maintained grounds that offer endless possibilities. Don't miss the opportunity to make this house your home.



GUIDE PRICE: £425,000-£450,000. Introducing this exceptional four-bedroom detached home, offering a unique chance to own a prestigious property that embodies comfort and convenience. This beautiful family residence is located in an exclusive cul-de-sac development consisting of only four homes, offering distant sea views from the first floor. The design provides a spacious and versatile interior that can be customized to your preferences, with well-maintained grounds that offer endless possibilities. Don't miss the opportunity to make this house your home.

LOCATION

Hopton-on-Sea is a picturesque village and seaside resort nestled along the beautiful south Norfolk coast in England. Situated just 5 miles south of the vibrant town of Great Yarmouth and 3 miles north of the charming town of Lowestoft in Suffolk, Hopton-on-Sea enjoys a prime location, offering easy access to both coastal gems. Hopton-on-Sea is perhaps best known for being the host of the World Indoor Bowls Championships offering a well catered for tourist industry, visitors and locals alike can enjoy the village amenities which include leisure facilities, pubs and restaurants, primary school, village hall, church, post office and local shops. Bus links provide access to the Cathedral City of Norwich, Great Yarmouth and Lowestoft.

SEA VIEW RISE

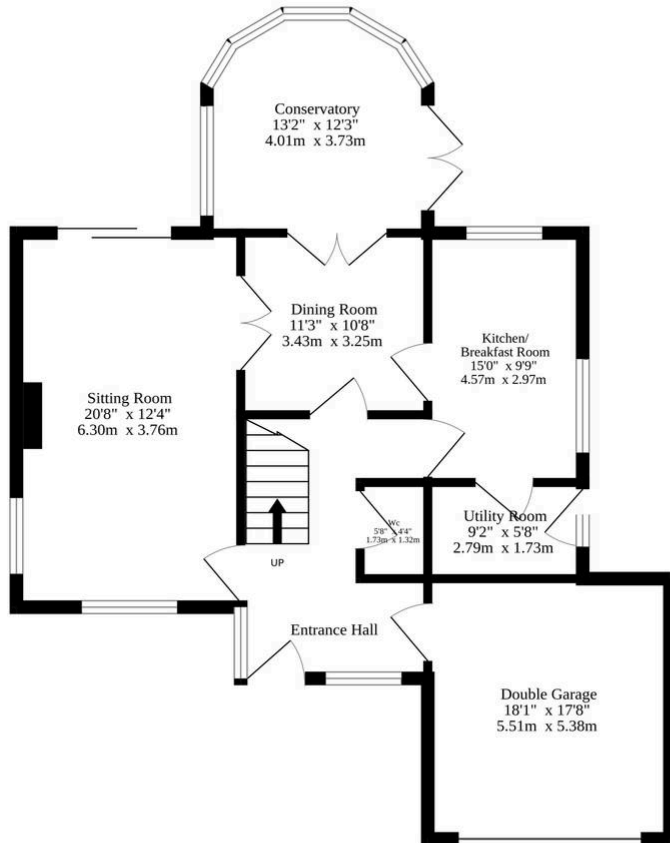
Step through the front door, and you are greeted by a beautifully presented family home that exudes comfort and warmth. The spacious and versatile accommodation is thoughtfully laid out to cater to the needs of modern living while retaining a sense of timeless charm. The reception space consists of a comfortable sitting room for relaxing and entertaining, a formal dining room to encourage family gatherings and a sun-lit conservatory allowing you to enjoy the outdoors within the comfort of your home.

At the heart of the home lies a well-equipped kitchen/breakfast room, fitted with units and appliances to be able to cook your favourite meals. Offering plenty of storage and counter-top space for meal preparation. Complemented by a functional utility room for your additional storage and laundry essentials.

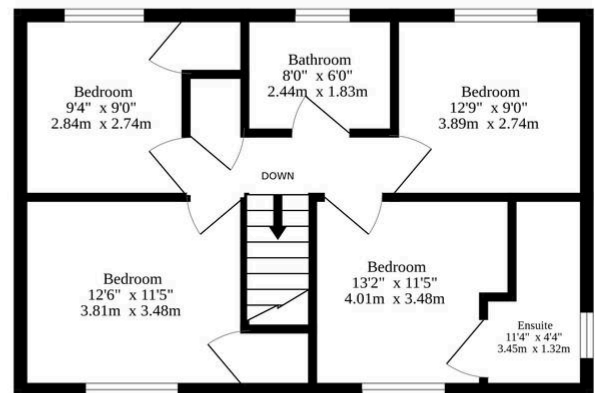
Ascend to the first floor where you will encounter four bedrooms, each thoughtfully designed to offer relaxation and privacy. The front windows frame distant sea views of Hopton beach, as well as flooding the rooms with an abundance of natural light. The principal bedroom flaunts a private en-suite, adding a luxury yet convenient touch to your everyday routine. The family bathroom completes the upper floor, comprising of a three piece suite that accommodates all residents in the household.



Ground Floor



1st Floor



Whilst every attempt has been made to ensure the accuracy of the floorplan contained here, measurements of doors, windows, rooms and any other items are approximate and no responsibility is taken for any error, omission or mis-statement. This plan is for illustrative purposes only and should be used as such by any prospective purchaser. The services, systems and appliances shown have not been tested and no guarantee as to their operability or efficiency can be given.
Made with Metropix ©2024

You can include any text here. The text can be modified upon generating your brochure.

You can include any text here. The text can be modified upon generating your brochure.

