



22 Lochhead Bank, Geoffrey Watling Way

Guide Price £175,000

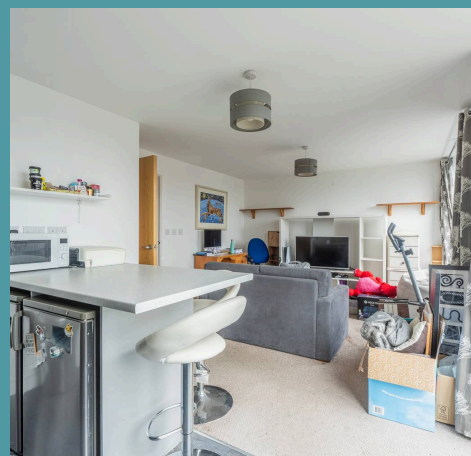
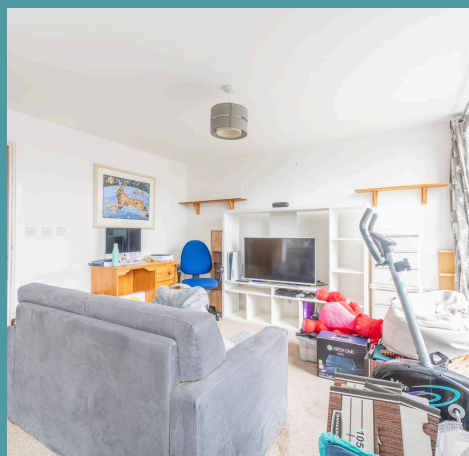
22 Lochhead Bank

Geoffrey Watling Way, Norwich

Lochhead Bank is a stunning top-floor flat located in the heart of Norwich, offering contemporary living with breathtaking views. This stylish one-bedroom apartment features a secure gated entrance and allocated parking, providing both convenience and comfort. Inside, residents can enjoy an open-plan living space, a well-equipped kitchen, and a spacious balcony overlooking the River Yare. With easy access to local amenities, the vibrant city centre, and beautiful riverside walks, this property perfectly blends modern living and a prime location.

The Location

Nestled in the heart of Norwich, Lochhead Bank is strategically located on Geoffrey Watling Way, just a short walk from the vibrant city centre. This address offers easy access to a variety of amenities and attractions. For daily shopping needs, the Co-op Food is only 0.3 miles away, while the Sainsbury's supermarket is approximately 0.5 miles from the property, providing convenient grocery options. Coffee lovers will appreciate the nearby Starbucks, located 0.4 miles away, perfect for a quick caffeine fix. The area also boasts excellent transport links, with Norwich train station just a 0.7-mile walk, offering regular services to London and beyond. Additionally, the scenic Norwich Cathedral is within a mile, making it easy to enjoy local history and architecture. Whether you're looking for shopping, dining, or cultural experiences, this location is ideally situated to meet all your needs.





22 Lochhead Bank

Geoffrey Watling Way, Norwich

Lochhead Bank

Introducing a stunning top-floor flat nestled in a prime city centre location, offering the perfect blend of contemporary living and scenic views. This stylish one-bedroom apartment features a secure gated entrance and allocated parking, making it an ideal choice for those seeking both convenience and central living.

With a leasehold tenure of 112 years remaining, residents can enjoy peace of mind in this desirable community, close to local amenities and Norwich's mainline train station.

Step inside to discover an inviting open-plan living space that seamlessly combines the sitting room, dining area and kitchen. The well-equipped kitchen boasts integrated cooking appliances, while the spacious living area offers plenty of natural light and a versatile layout. From here, access the balcony with stunning views over the River Yare, perfect for relaxing or entertaining. The accommodation includes a generously sized double bedroom with a walk-in wardrobe and a modern bathroom featuring a three-piece suite with both a bath and a shower.

While the property does not include communal garden space, it is ideally situated along the picturesque banks of the River Yare, offering opportunities for leisurely riverside walks. Residents can easily explore the vibrant city center, with shops, restaurants, and cultural attractions just a short stroll away.

- Enjoy views from this stylish top-floor apartment, providing a serene living environment

