



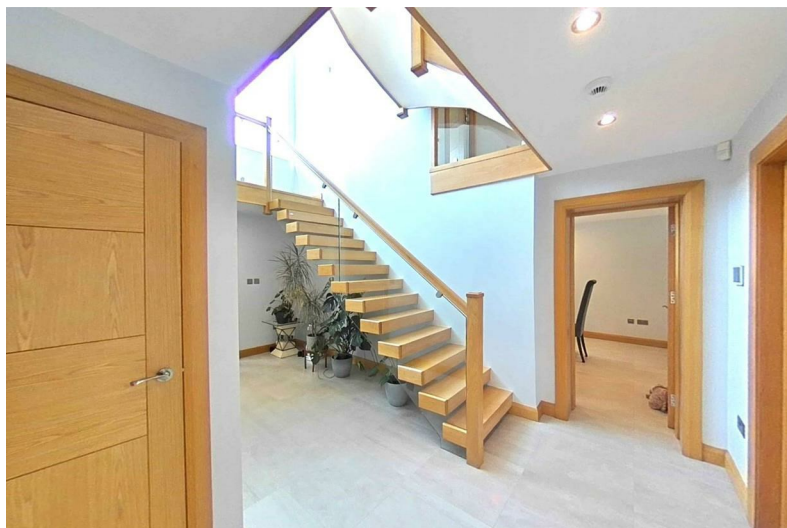
Altwood Drive

Maidenhead SL6

£1,885,000



Altwood Drive Maidenhead SL6



Summary Description

This exquisite 8-bedroom, 5-bathroom estate in Maidenhead is a pinnacle of luxury living, offering a grand total of approximately 4000 sq ft. A masterclass in design, this property features a high-end kitchen, a Control 4 Smart Home system, and an opulent main bedroom with a walk-in wardrobe and lavish ensuite. With an annex, extensive gardens, and upscale finishes throughout, this property presents a rare opportunity to experience the ultimate in refined living.

Expansive 8-bedroom, 5-bathroom layout, providing ample room for both family living and entertaining
Cutting-edge Control 4 Smart Home system

Self-contained 2-bedroom annex offers a separate living space

Meticulously landscaped garden surrounds the property

Open plan reception room with bifold doors & underfloor heating

The German Elementa Classic Handleless Kitchen is a culinary masterpiece

Main bedroom features a walk-in wardrobe & ensuite bathroom with luxury fixtures

Two garages with planning permission for conversion into a games room offer versatility

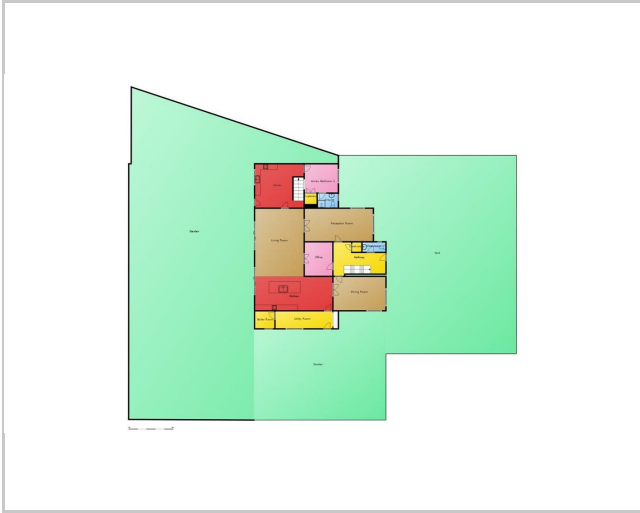
Gated entrance at the end of a cul-de-sac

Property exudes an atmosphere of sophisticated elegance and cohesive style throughout

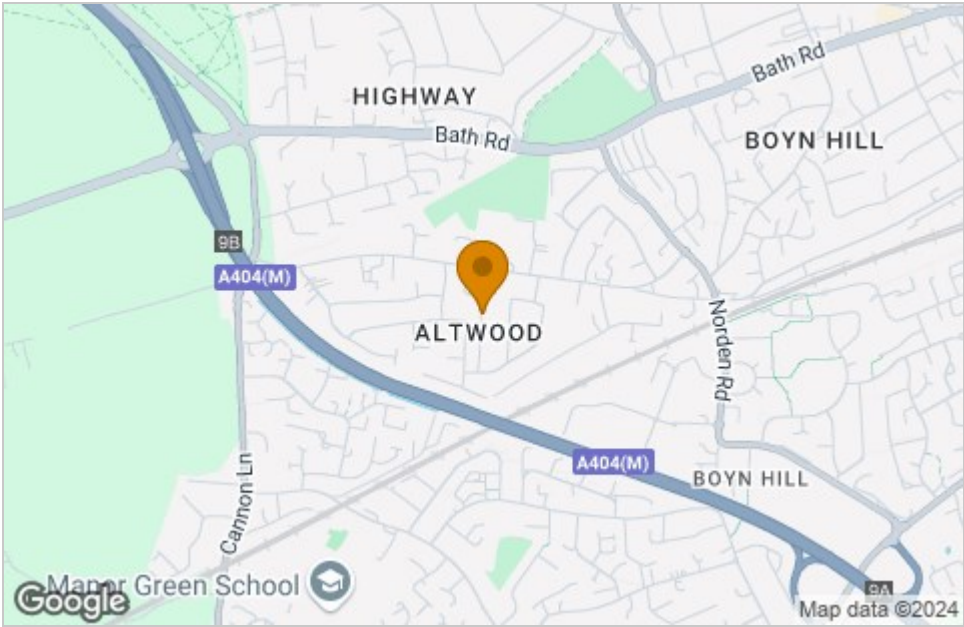




Floor Plan



Area Map



Energy Efficiency Graph

Energy Efficiency Rating		
	Current	Potential
Very energy efficient - lower running costs		
(92 plus) A		
(81-91) B	81	81
(69-80) C		
(55-68) D		
(39-54) E		
(21-38) F		
(1-20) G		
Not energy efficient - higher running costs		
England & Wales	EU Directive 2002/91/EC	

Council Tax Band: F

Viewing

Please contact our Burnham Office on 01753 255 755 if you wish to arrange a viewing appointment for this property or require further information.

These particulars, whilst believed to be accurate are set out as a general outline only for guidance and do not constitute any part of an offer or contract. Intending purchasers should not rely on them as statements of representation of fact, but must satisfy themselves by inspection or otherwise as to their accuracy. No person in this firm's employment has the authority to make or give any representation or warranty in respect of the property.