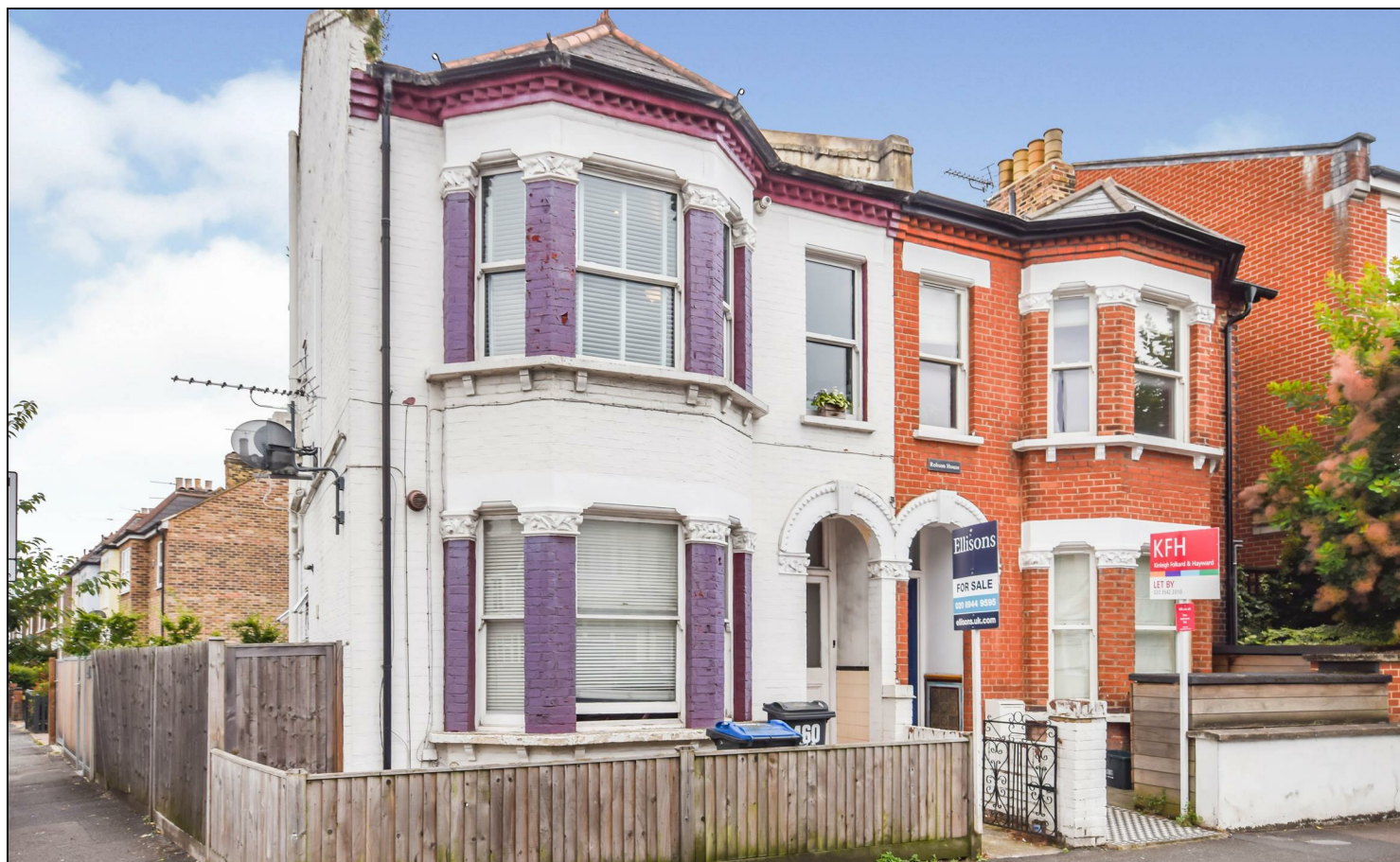


Kingston Road Raynes Park, SW20 8DX

£315,000 Leasehold



This fantastic one bedroom first floor Victorian conversion with shared garden/patio and private parking space is conveniently located for both Raynes Park and Wimbledon Chase Stations. An excellent first purchase or buy to let investment with good size reception room with air conditioning, bedroom and neutrally decorated kitchen and bathroom with whirlpool bath. Share of Freehold

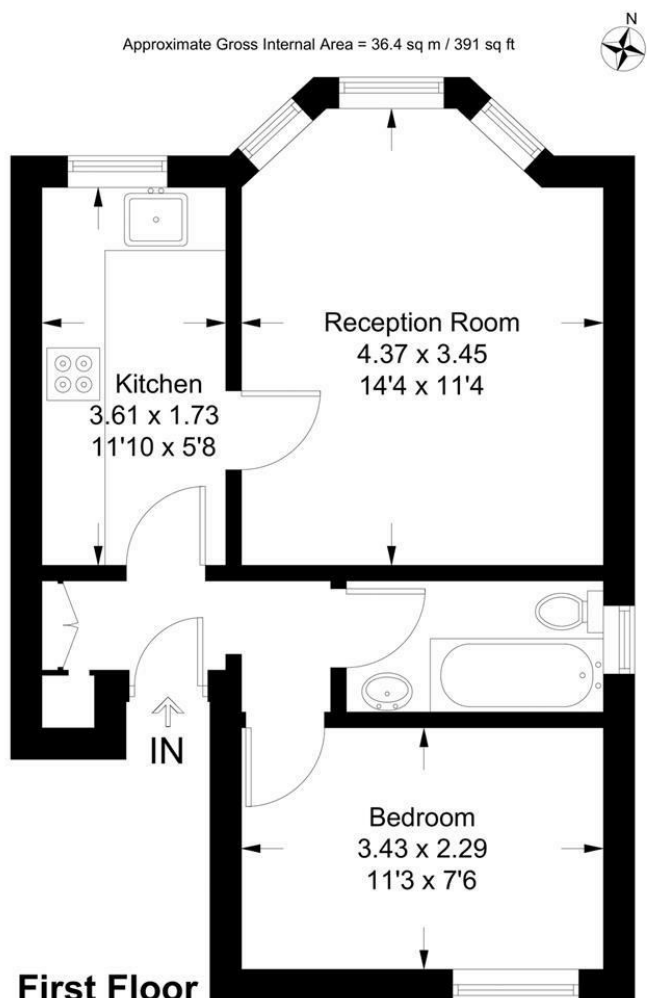
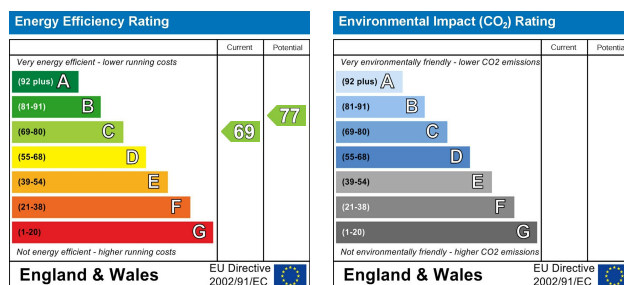


Illustration for identification purposes only, measurements are approximate, not to scale. floorplansUsketch.com © (ID752713)



- One Bedroom
- First Floor Victorian Conversion
- Private Parking Space
- Garden/ Patio
- Close To Raynes Park Station
- Close To Wimbledon Chase Station
- Share Of Freehold
- Loft Space - Potential to extend S.T.P.P.
- Ideal First Time Purchase Or Buy To Let
- EPC Rating - C



For Free Mortgage Quote and Best Mortgage Rates, call Ellisons Mortgage Advisor on 0208 944 9595



Although these particulars are believed to be correct, their accuracy is not guaranteed and they do not form part of any contract.

**Celebrating 30 years
of successful Sales and
Lettings in Merton**

