



HIGH TIMBER STREET, LONDON, EC4V 3PL

Asking Price £519,000

1 Bedrooms | 1 Bathrooms | For Sale

Property Features

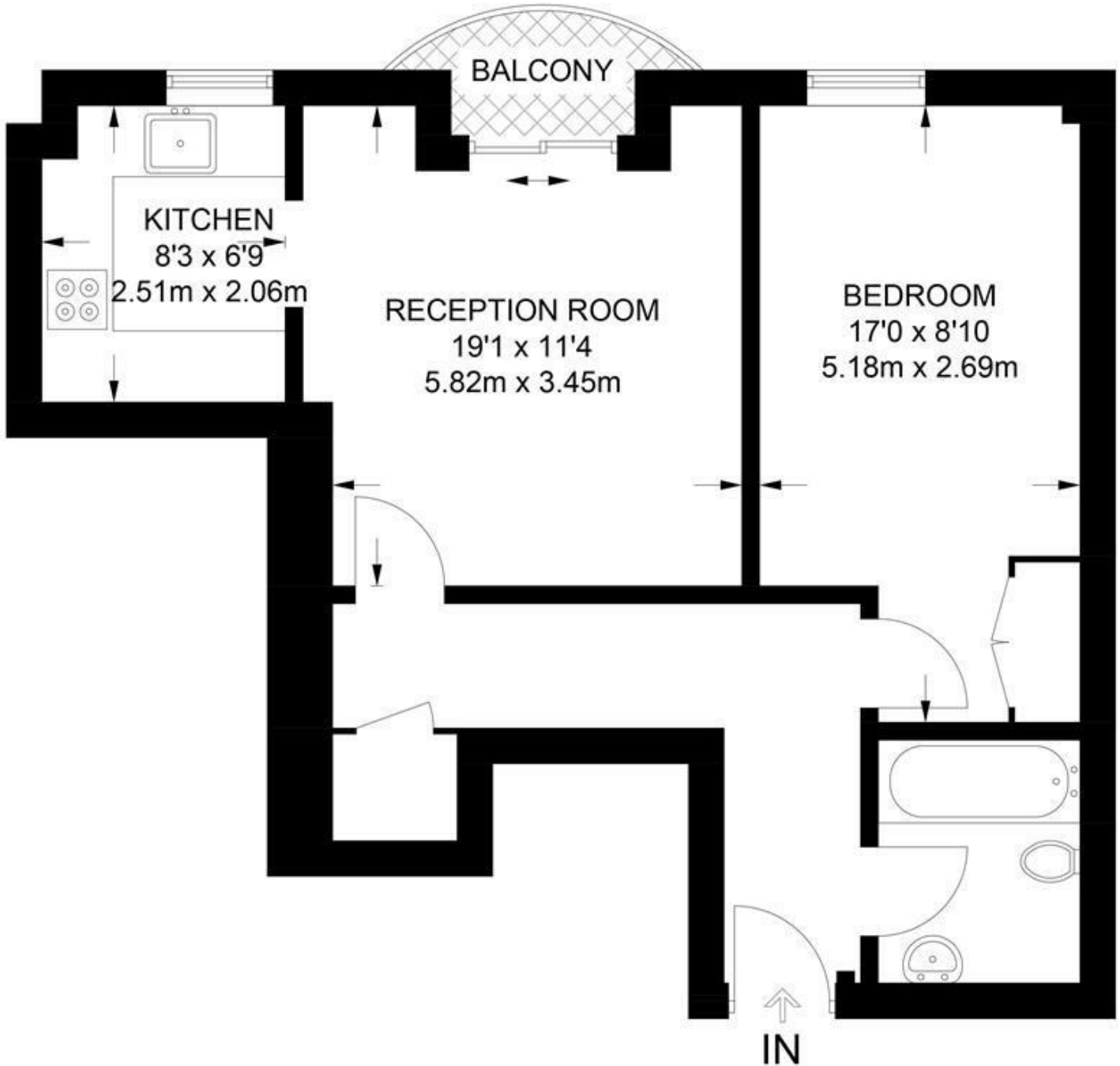
- One Bedroom
- Bathroom / WC
- 4th Floor
- Approx 500 sq feet
- Central City Location
- Open Plan Fitted Kitchen
- Laminate Wood Flooring
- Day Porter
- 999 Year Lease
- Good Transport Links

Situated in GLOBE VIEW is this one bedroom apartment. This riverside block is in the heart of the city comprising of a good size sitting room with open plan kitchen. The kitchen is fully fitted and equipped. From the reception room you have a small balcony overlooking High Timber Street. A bedroom and bathroom make up the remaining accommodation which in total measures approximately 500 sq feet. Other features of this apartment are its close proximity to Bank, Mansion House and St Pauls Cathedral and the advantage of a day concierge.

Globe View is close to St Pauls in a very central CITY location also close to BLACKFRIARS (Circle Line), St PAUL'S (Central Line) Mansion House and the new Elizabeth Line Station at Moorgate and Farringdon. Within walking distance are Waitrose, Marks & Spencer and Tesco. Also within easy reach are St. Pauls' Cathedral, The River, South Bank, Tate Modern, and the One New Change Shopping Complex with many shops, restaurants and bars.

Lease: 999 yeras from 1996 (share of Freehold) Service Charge: £3584.00 per annum
Council Tax: Band E = £1488.53 per year (25% discount for single occupancy)

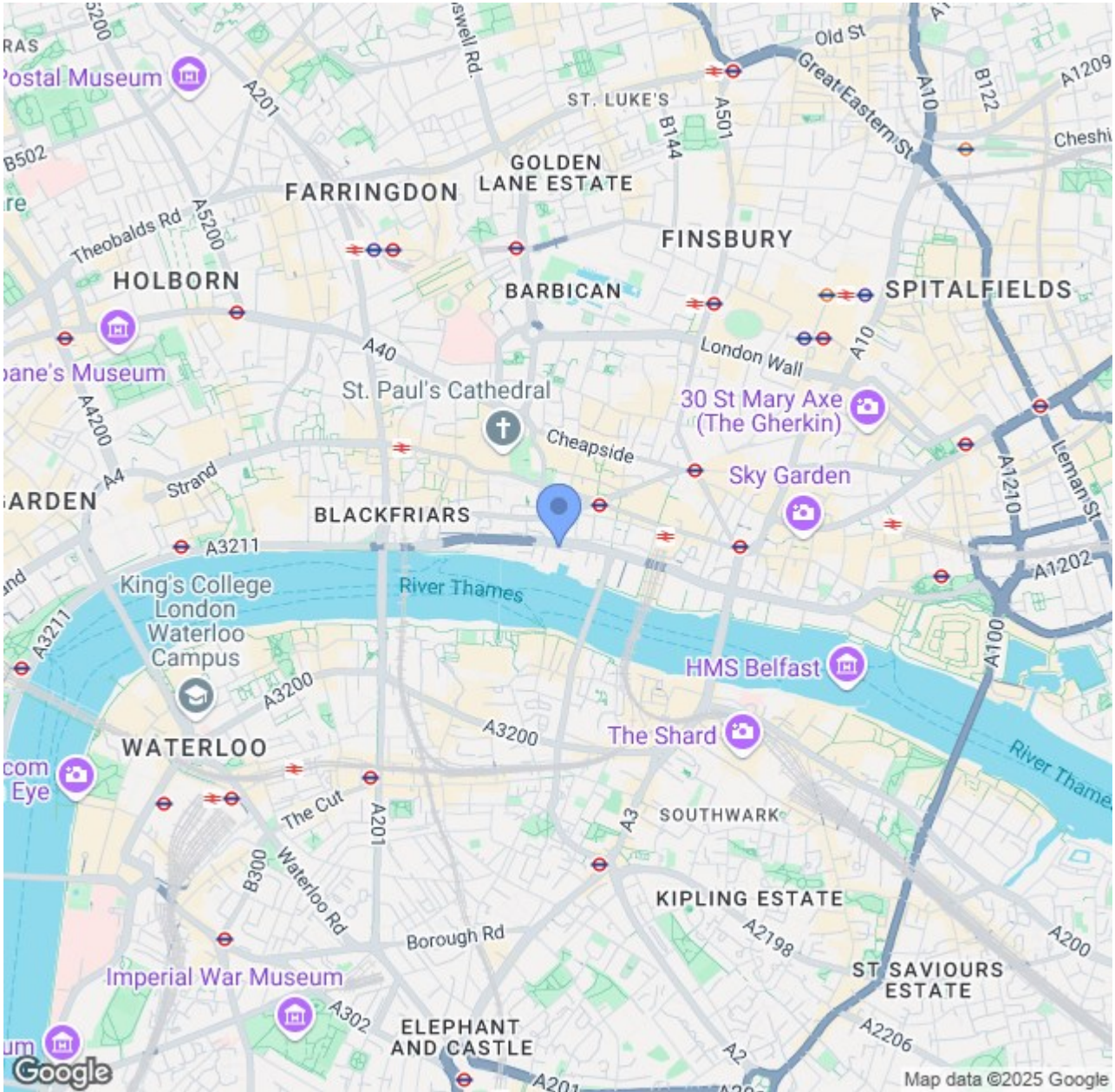




FOURTH FLOOR

APPROXIMATE GROSS INTERNAL AREA
502 SQ FT / 46.6 SQ M

This plan has been drawn for illustrative and identification purposes only.



CONTACT US ABOUT THIS PROPERTY

122 Newgate Street, London, EC1A 7AA

T: 020 7600 0026

F: 020 7600 0025

E: property@scottcity.co.uk



Energy Efficiency Rating		
	Current	Potential
Very energy efficient - lower running costs		
(92 plus) A		
(81-91) B		
(69-80) C		
(55-68) D		
(39-54) E		
(21-38) F		
(1-20) G		
Not energy efficient - higher running costs		
England & Wales	75	77
	EU Directive 2002/91/EC	