



Cuffley Hill, Goffs Oak



- IMMACULATEDLY PRESENTED
- FIVE BEDROOMS
- 30FT KITCHEN / FAMILY ROOM
- MATURE REAR GARDEN
- OFF STREET PARKING
- DOUBLE FRONTED

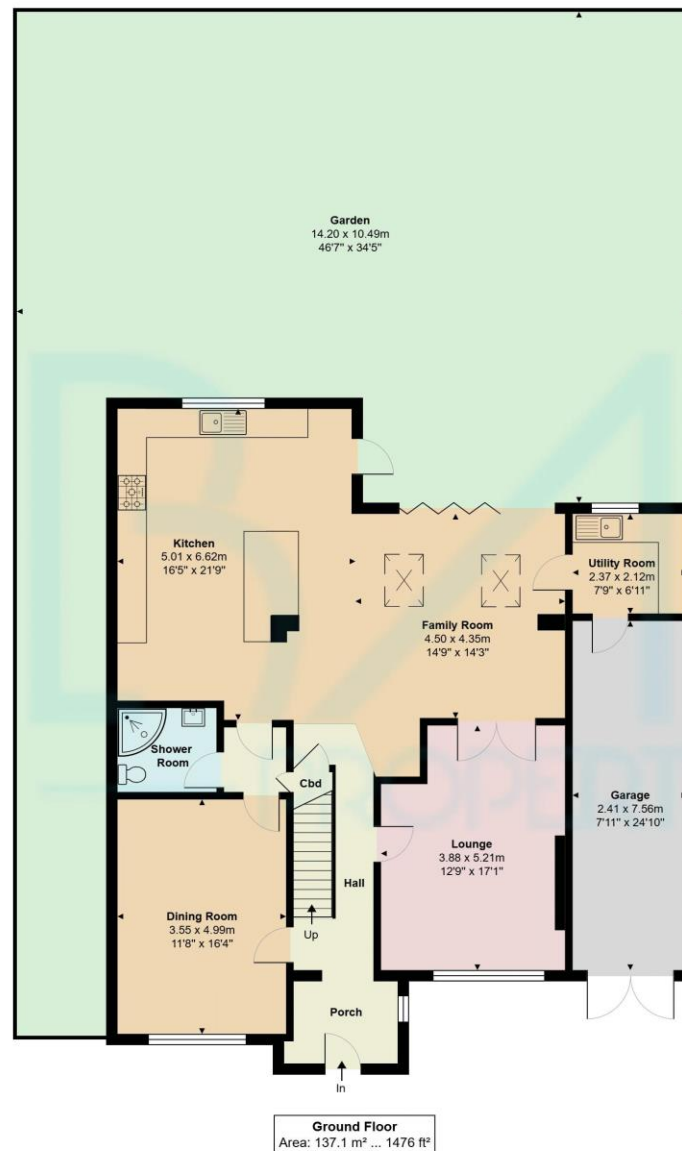
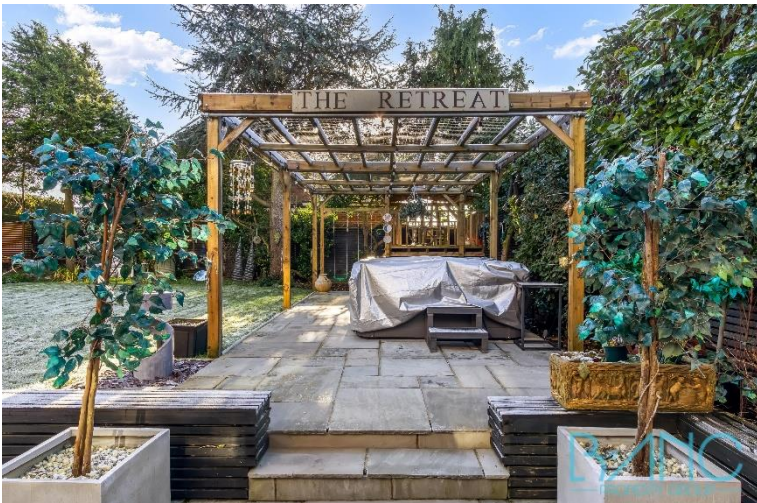


Cuffley Hill

Goffs Oak EN7 5EZ

Located in the popular area of 'Goffs Oak' we are pleased to present this immaculately presented five bedroom extended detached house. The property has recently been fully renovated to in our opinion a high standard and has many benefits to include two reception rooms, five bedrooms, four of which are doubles, ground floor shower room, en-suite shower room to bedroom one, 30ft open plan kitchen/diner. Externally, the property boasts a delightful, mature rear garden designed for entertaining. The garden features a large patio area with a pergola and a jacuzzi, all enhanced by remote-controlled lighting for a perfect ambiance. There is off street parking, garage/storage room and much more. Viewing is highly recommended to fully appreciate this property.

The area of Cuffley and Goffs Oak is popular with commuters as it is surrounded by Hertfordshire countryside, yet very conveniently placed for transport links into London, just a few miles from the M25/A10 and just a few minutes drive from Cuffley station with regular trains to London Finsbury Park, Kings Cross and Moorgate. The area has a good selection of local shops for daily conveniences, including local eateries and there are further shops at the Brookfield Shopping Centre. Positioned ideally for families with local schooling in mind. An extremely short walk to the ever-popular Woodside Primary school and within reach of some very good state and private schools.



BANC
PROPERTY GROUP

Cuffley Hill, Goffs Oak, EN7 5EZ
Total Area: 222.7 m² ... 2397 ft² (excluding garden)
All measurements are approximate and for display purposes only