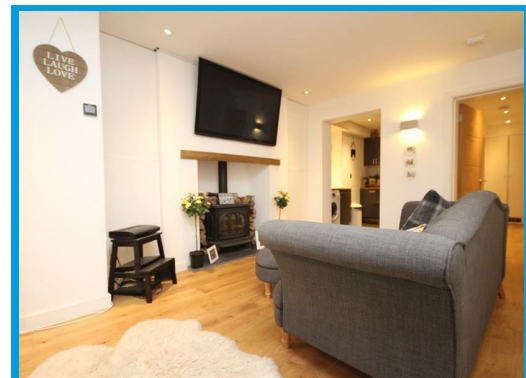




Hunter Road, Guildford Surrey, GU1 3LH

£1,750 PCM

****STUDENT ACCOMODATION**** This stunning, well presented two bedroom maisonette offers spacious and light accommodation throughout and is positioned within a short walk to Guildford town centre and High Street.



Description

A spacious two double bedroom apartment located in the heart of Guildford town centre.

The property comprises a hallway leading onto a large reception room, two double bedrooms, kitchen with appliances and a family bathroom with shower over bath.



Energy Efficiency Rating		Current	Potential
Very energy efficient - lower running costs			
(92 plus) A			
(81-91) B			
(69-80) C			
(55-68) D			
(39-54) E			
(21-38) F			
1-10 G			
Not energy efficient - higher running costs			
England & Wales		63	78
EU Directive 2002/91/EC			

Environmental Impact (CO ₂) Rating		Current	Potential
Very environmentally friendly - lower CO ₂ emissions			
(92 plus) A			
(81-91) B			
(69-80) C			
(55-68) D			
(39-54) E			
(21-38) F			
1-10 G			
Not environmentally friendly - higher CO ₂ emissions			
England & Wales			
EU Directive 2002/91/EC			

