



**Northwood Hall, Hornsey Lane , Highgate, N6**

**£475,000**

**Leasehold**



44 highgate high street, highgate village, london, n6 5hx

telephone 020 8348 8000 facsimile 020 8348 8232

email [highgate@litchfields.com](mailto:highgate@litchfields.com) web [litchfields.com](http://litchfields.com)

offices also in hampstead garden suburb





**We are pleased to offer this super 2 bedroom top floor flat (with lifts) in this landmark Art Deco purpose built block. This very bright south facing apartment features a sunny reception room with balcony and superb far reaching City views with two bedrooms, bathroom and separate kitchen further benefits include ample off street parking, communal gardens and portorage. Northwood Hall is very conveniently located for fast access to Central London and the City, with all the amenities of both historic Highgate Village and bustling Crouch End Broadway on the doorstep with the green open spaces of the Parkland Walk, Highgate and Queen's woods and Waterlow Park on the doorstep. EPC – E**

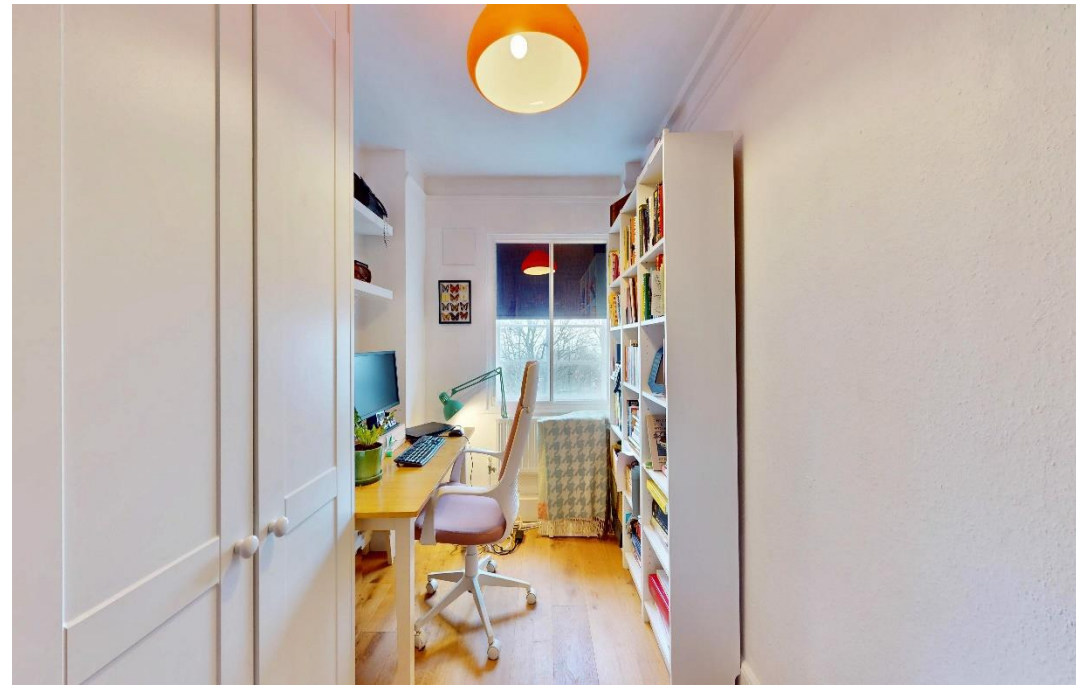




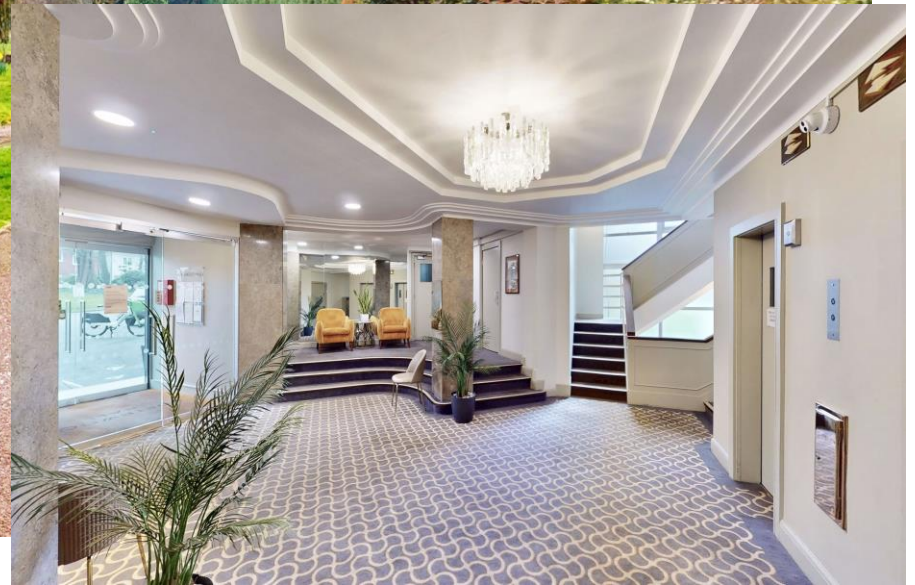
**Fantastic Panoramic Views**  
**Reception**  
**2 bedrooms**  
**Kitchen**  
**Bathroom**  
**Lifts**  
**Communal gardens**  
**Off street Parking**  
**Near shops and Transport**  
**Chain Free**



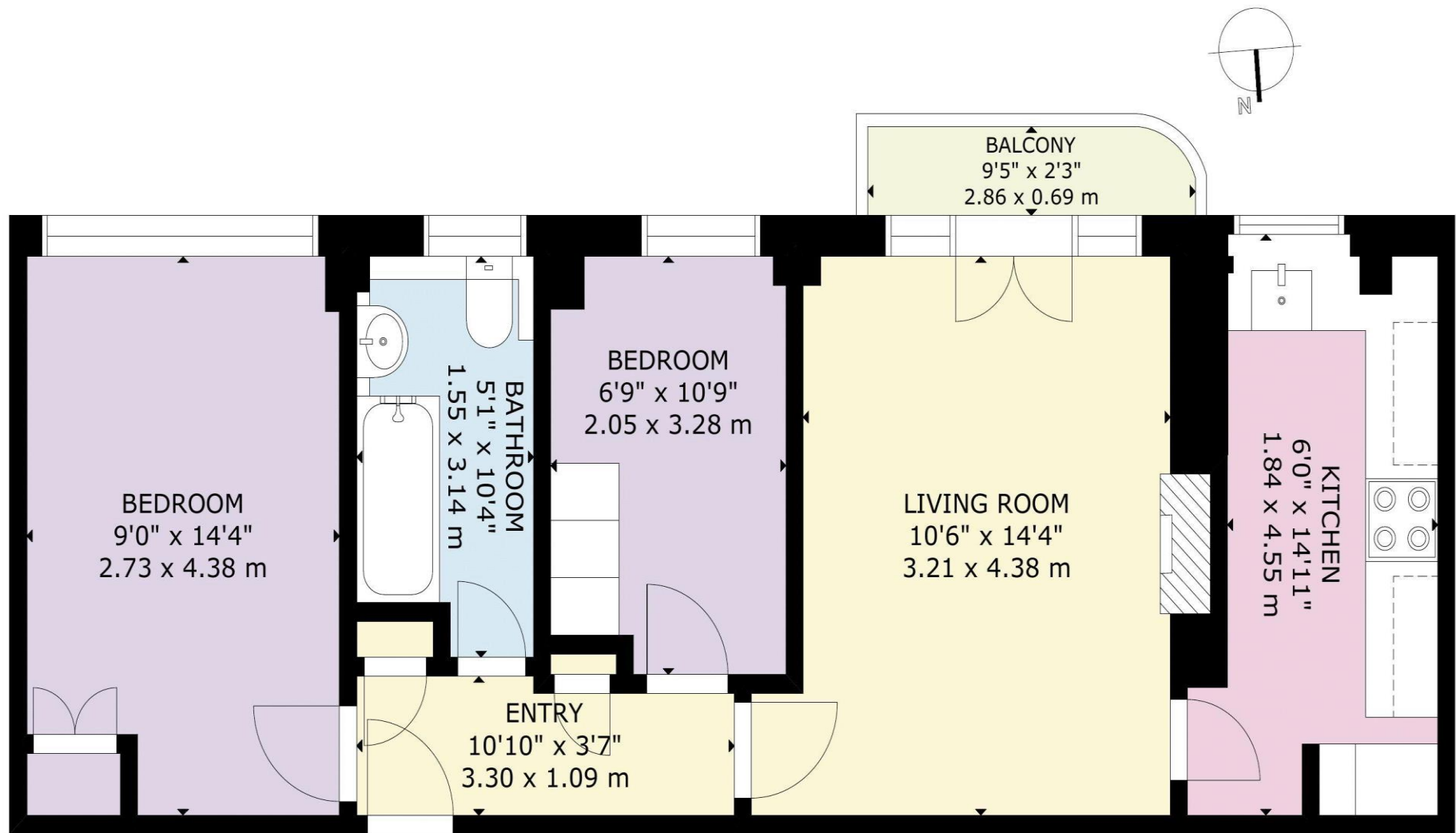












GROSS INTERNAL AREA  
 TOTAL: 54 m<sup>2</sup>/584 sq.ft  
 SIXTH FLOOR: 54 m<sup>2</sup>/584 sq.ft  
 EXCLUDED AREAS: BALCONY: 81 m<sup>2</sup>/874 sq.ft  
 SIZE AND DIMENSIONS ARE APPROXIMATE, ACTUAL MAY VARY

SIXTH FLOOR