



Four bedroom bungalow in a sought after location

exclusive to

SAUNDERS

richardsaunders.co.uk

Green Lane Lower Kingswood KT20

Banstead Village 4.0 miles

London by rail 45 minutes

M25 (Junction 8) 1.5 miles

All times and distances are approximate

Available now this four bedroom two bathroom bungalow comes to market offering picturesque countryside views. The property is situated in a sought after location with easy access to the M25 & M23, with your closest station being Kingswood. Which has direct links to London Bridge or change at East Croydon for London Victoria. Additional benefits include double garage and private driveway with parking for multiple cars and enclosed rear garden.

Fibre To Cabinet Broadband Available

Gas, water, electricity, broadband and council tax utility bills are the tenants responsibility

We hold our deposits in a TDS scheme

The information is correct to the best of our knowledge on marketing this property

Available Now

Four Bedroom

Unfurnished

Sought After Location

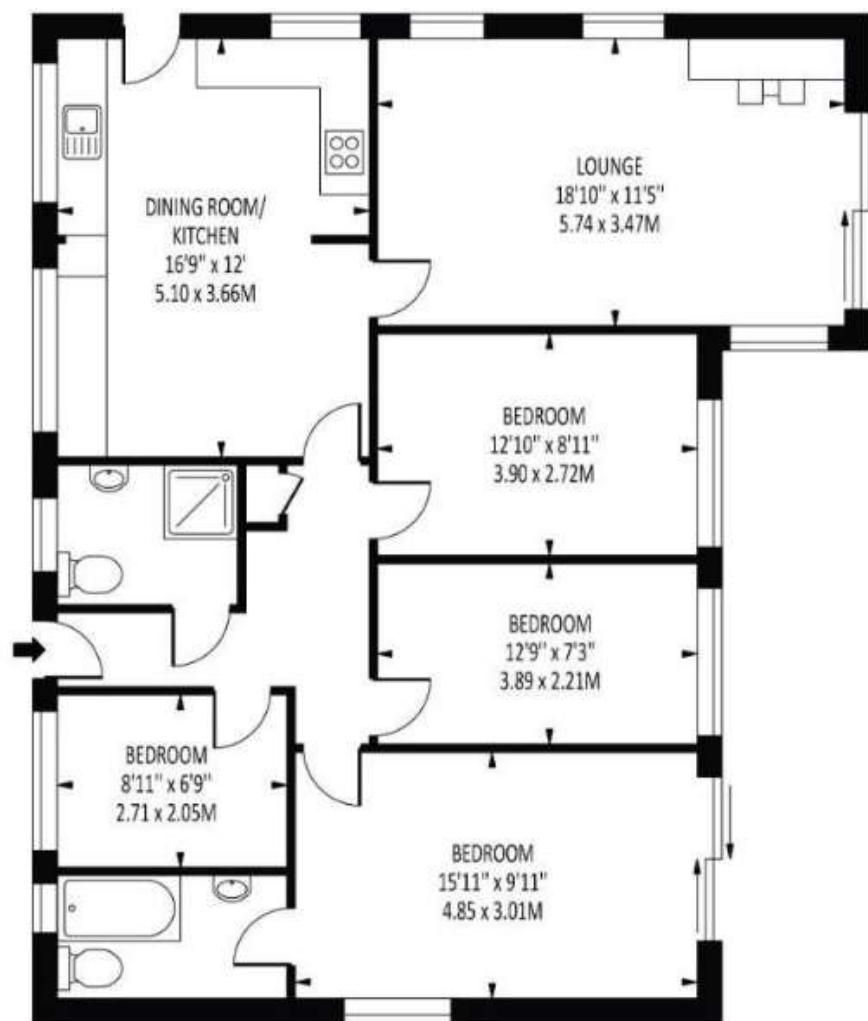
Close To Train Station

Double Garage

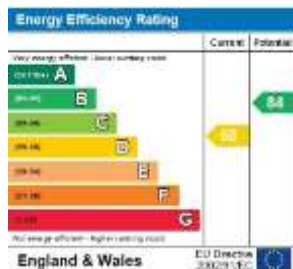
Price £3,000pcm







GROUND FLOOR



discover more at richardsaunders.co.uk



IMPORTANT NOTICE TO PURCHASERS: We endeavour to make our sales particulars accurate and reliable, however, they do not constitute or form part of an offer or any contract and none is to be relied upon as statements of representation or fact. The services, systems and appliances listed in this specification have not been tested by us and no guarantees as to their operating ability or efficiency are given. All measurements have been taken as guide to prospective buyers only, and are not precise. If you require clarification or further information on any points, please contact us, especially if you are travelling some distance to view.

Viewing
Please call us to arrange
a viewing appointment

1 Waterhouse Lane
Kingswood
01737 360000

2 High Street
Banstead
01737 363333

Residential Lettings
All Areas
01737 370700

SAUNDERS
richardsaunders.co.uk