



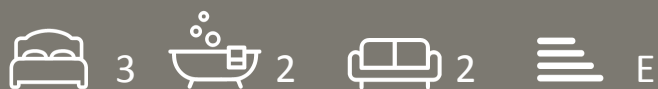
Flat 10 Mount Carmel Court, 20 Eden Grove, Islington, London, N7

£773 Per Week

- Close to public transport
- Fully Furnished
- Highbury & Islington Tube
- Holloway Tube
- Private Terrace

Flat 10 Mount Carmel Court, Islington N7 8EQ

An amazing modern three bedroom flat available in this charming architectural building. The property is located on the 1st floor and comprises of a spacious lounge area leading onto a large private south facing terrace. The property has a modern fitted kitchen leading off of the lounge.



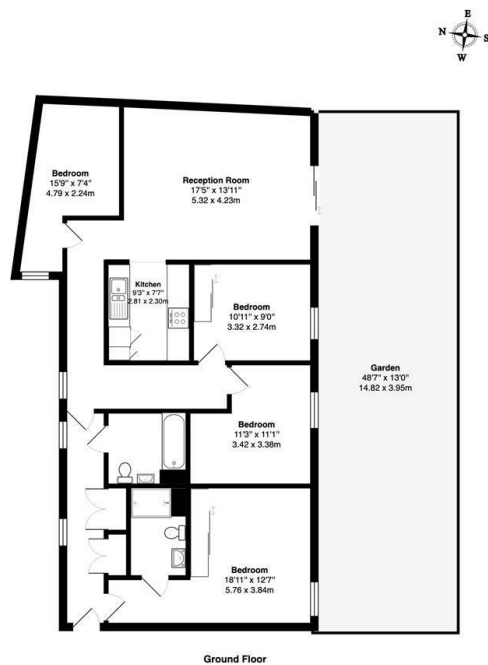
Council Tax Band: C



Full description







Ground Floor
Mount Carmel Court N7
Total Gross Area: 1147 ft² ... 106.6 m² (excluding garden)
All measurements are approximate and for identification guideline purposes only, not to scale.
Compliant with the RICS code of measuring practice.

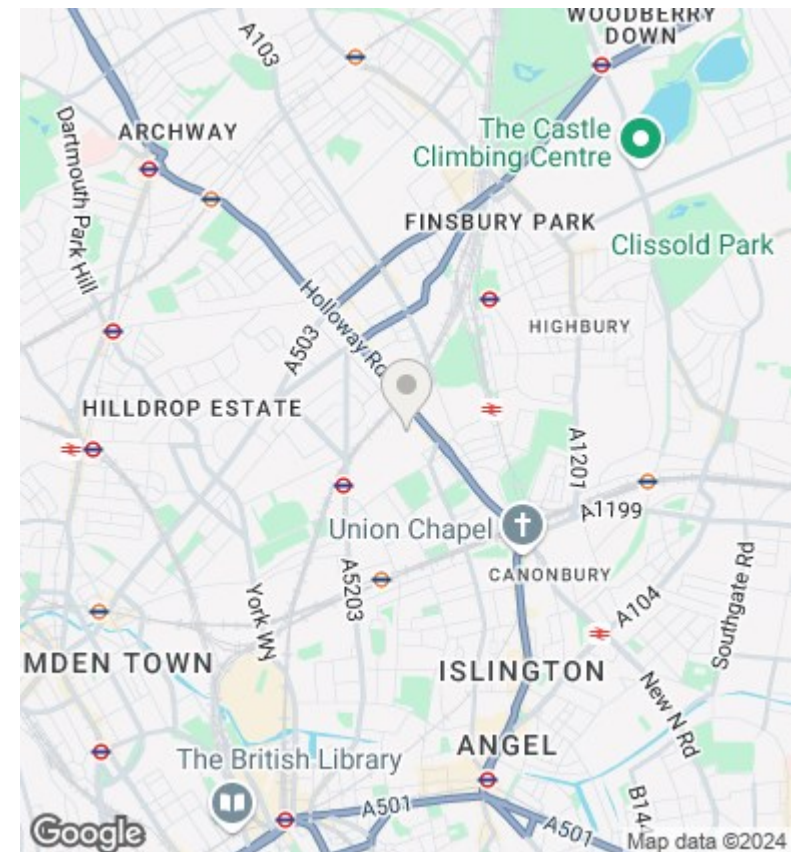
Directions

Viewings

Viewings by arrangement only. Call 02073593191 to make an appointment.

Council Tax Band

C



Energy Efficiency Rating		
	Current	Potential
Very energy efficient - lower running costs		
(92 plus) A		
(81-91) B		
(69-80) C		
(55-68) D	50	50
(39-54) E		
(21-38) F		
(1-20) G		
Not energy efficient - higher running costs		
England & Wales		
EU Directive 2002/91/EC		