



4 Marcus Street, London, SW18 2JT
£1,950 Per month

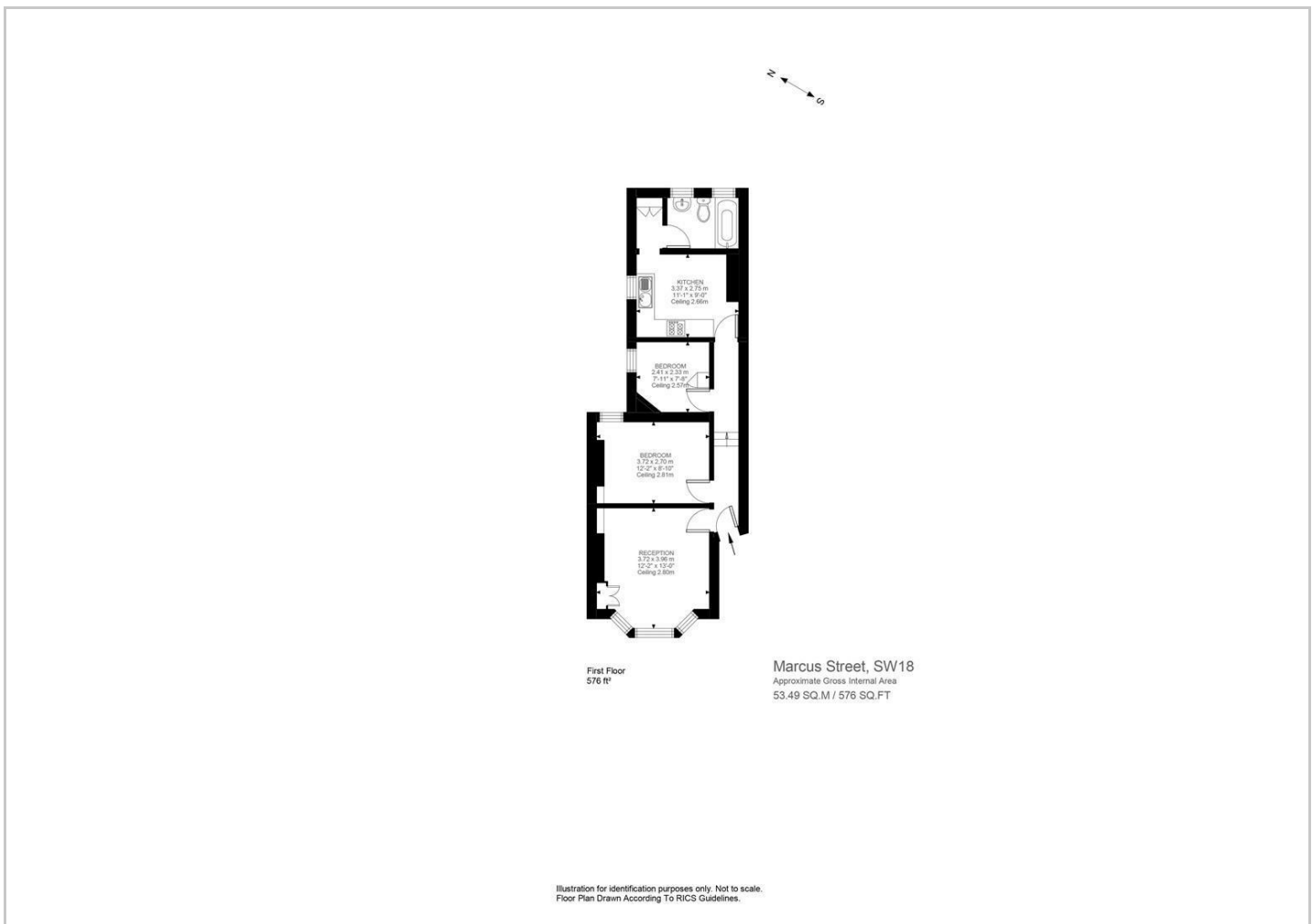
 **2**  **1**  **1**  **E**

A gorgeous, neutrally decorated two bedroom first floor flat located on a quiet, sought-after residential street within walking distance of Wandsworth Town station, offering outstanding access to local transport links, restaurants and amenities.





Energy Efficiency Rating		
	Current	Potential
Very energy efficient - lower running costs		
(92 plus) A		
(81-91) B		
(69-80) C		
(55-68) D		63
(39-54) E	50	
(21-38) F		
(1-20) G		
Not energy efficient - higher running costs		
England & Wales		EU Directive 2002/91/EC



627 Garratt Lane, London, SW18 4SX

T: 020 3633 5613
E: info@petrasproperty.com
www.petrasproperty.com

These particulars, whilst believed to be accurate are set out as a general outline only for guidance and do not constitute any part of an offer or contract. Intending purchasers should not rely on them as statements of representation of fact, but must satisfy themselves by inspection or otherwise as to their accuracy. No person in this firms employment has the authority to make or give any representation or warranty in respect of the property.