



## 4 Knightswood, Gunton

Offers in Region of £450,000

# 4 Knightswood

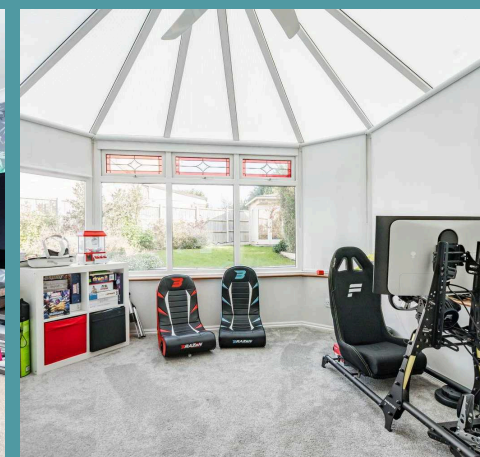
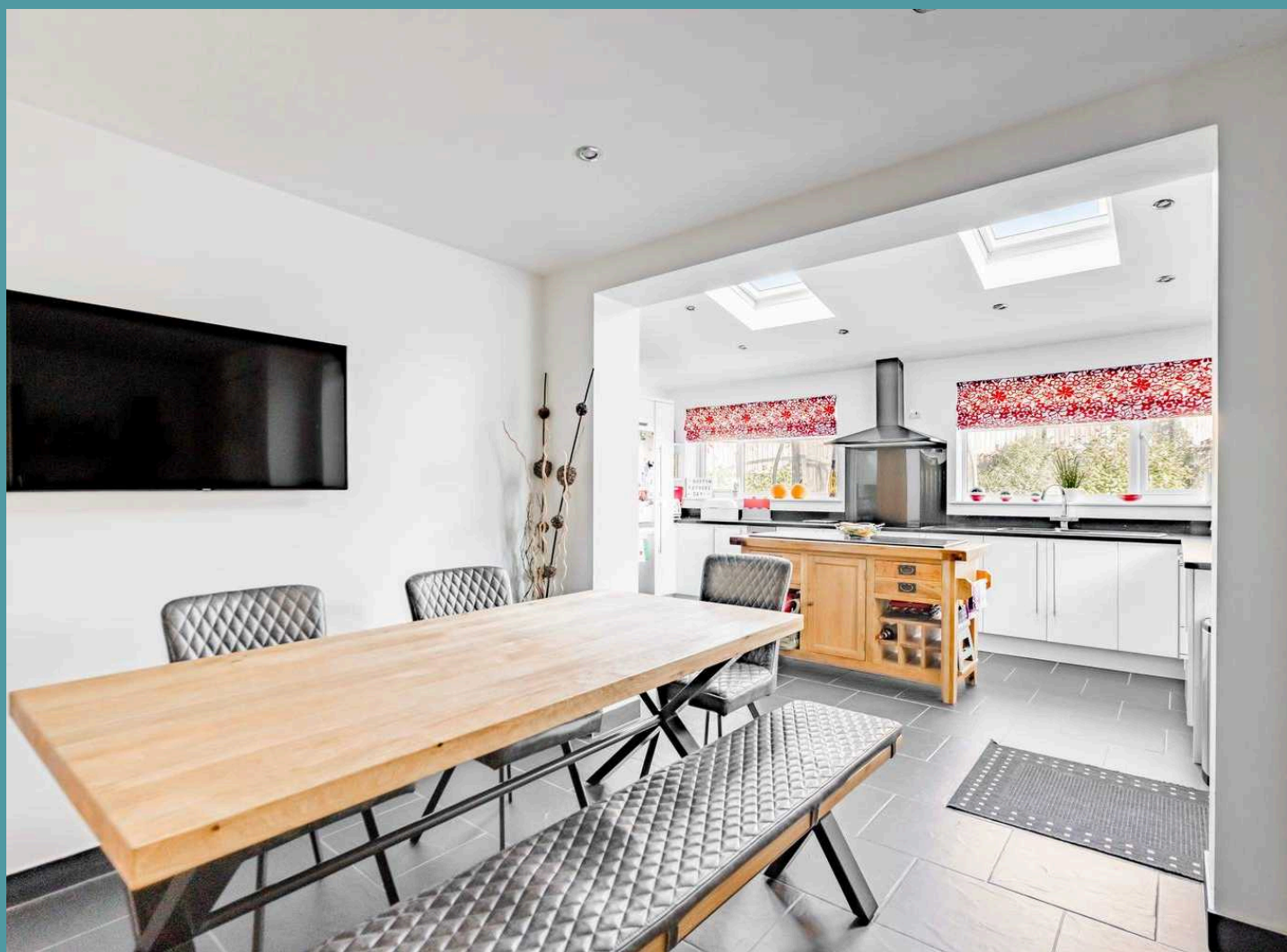
Gunton, Lowestoft

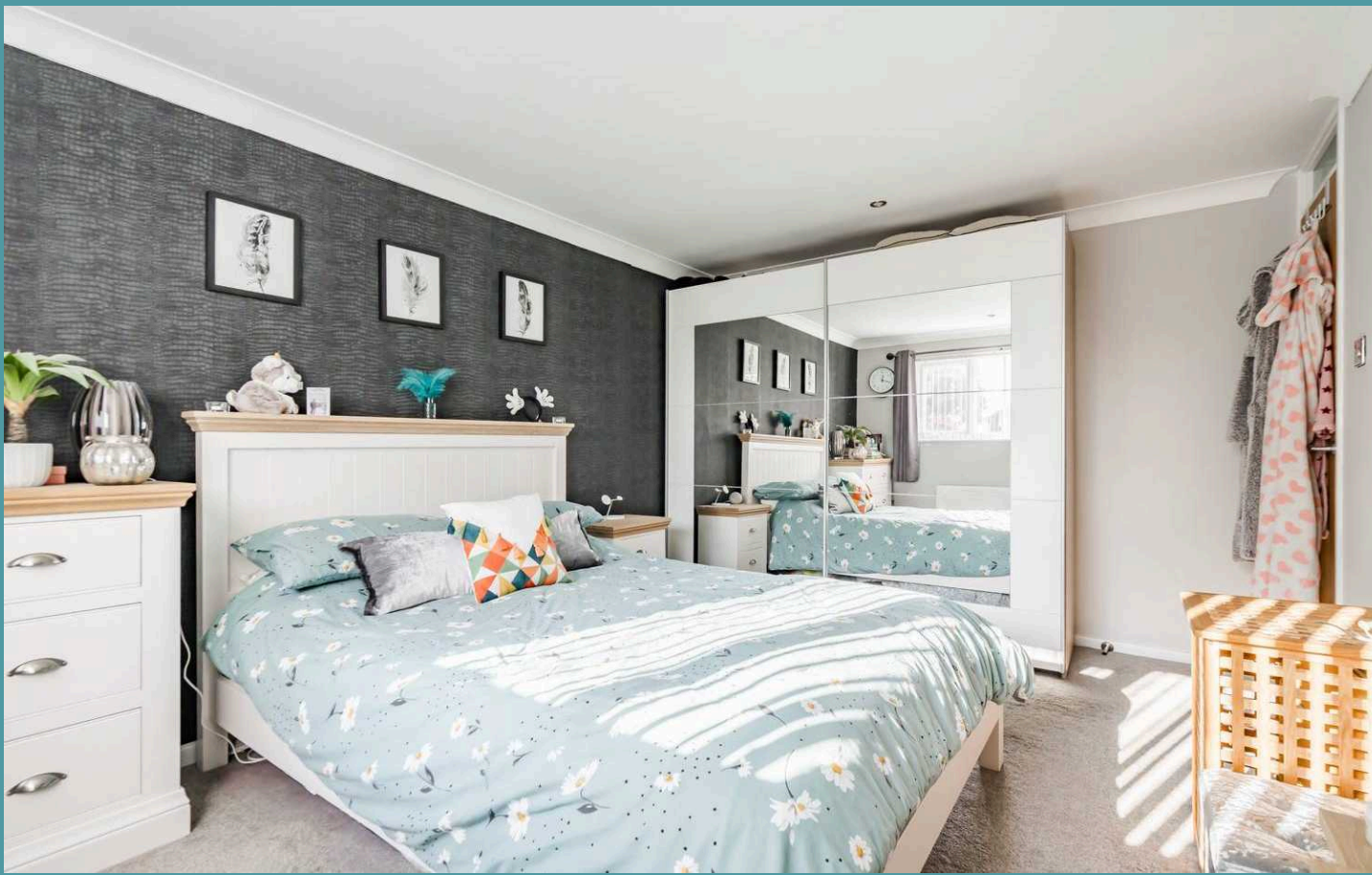
Located down a quiet cul-de-sac in the desirable area of Gunton, this extended detached residence presents an exquisite opportunity to fulfil your dreams of a perfect family home. With its beautiful facade and versatile accommodation, this property provides an exceptional living experience for those seeking space, comfort, and modern amenities. Don't miss the chance to make this residence your own and experience all it has to offer.

## LOCATION

Gunton is a suburb of Lowestoft, in the East Suffolk district, in the English county of Suffolk. Gunton beach is just a short stroll away, perfect for long family walks with the beautiful seaside scenery. There are a number of schools in the area to suit all ages, a range of amenities including a Post Office, Bus Station and Train Station, which both run regular services to Norwich and plenty of shopping facilities and restaurants.

Gunton is situated in the wonderful seaside destination of Lowestoft, steeped in history and offers a delightful blend of coastal allure and urban convenience. With its Blue Flag award-winning sandy beaches, Victorian seafront gardens and two charming piers, residents are treated to strolls along the shore and tranquil moments amidst nature's beauty.



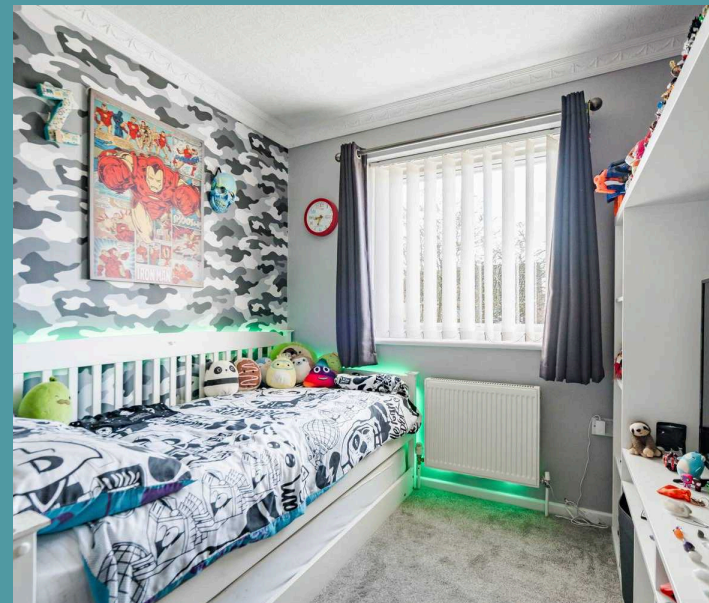
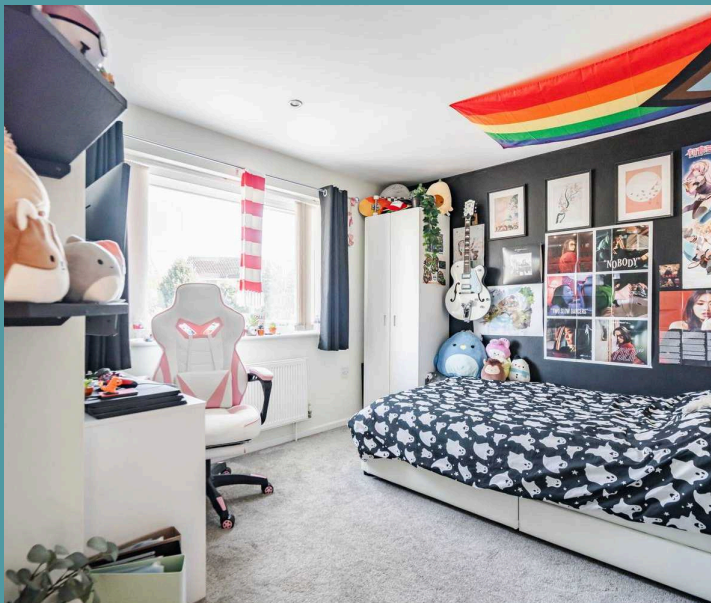


## 4 Knightswood

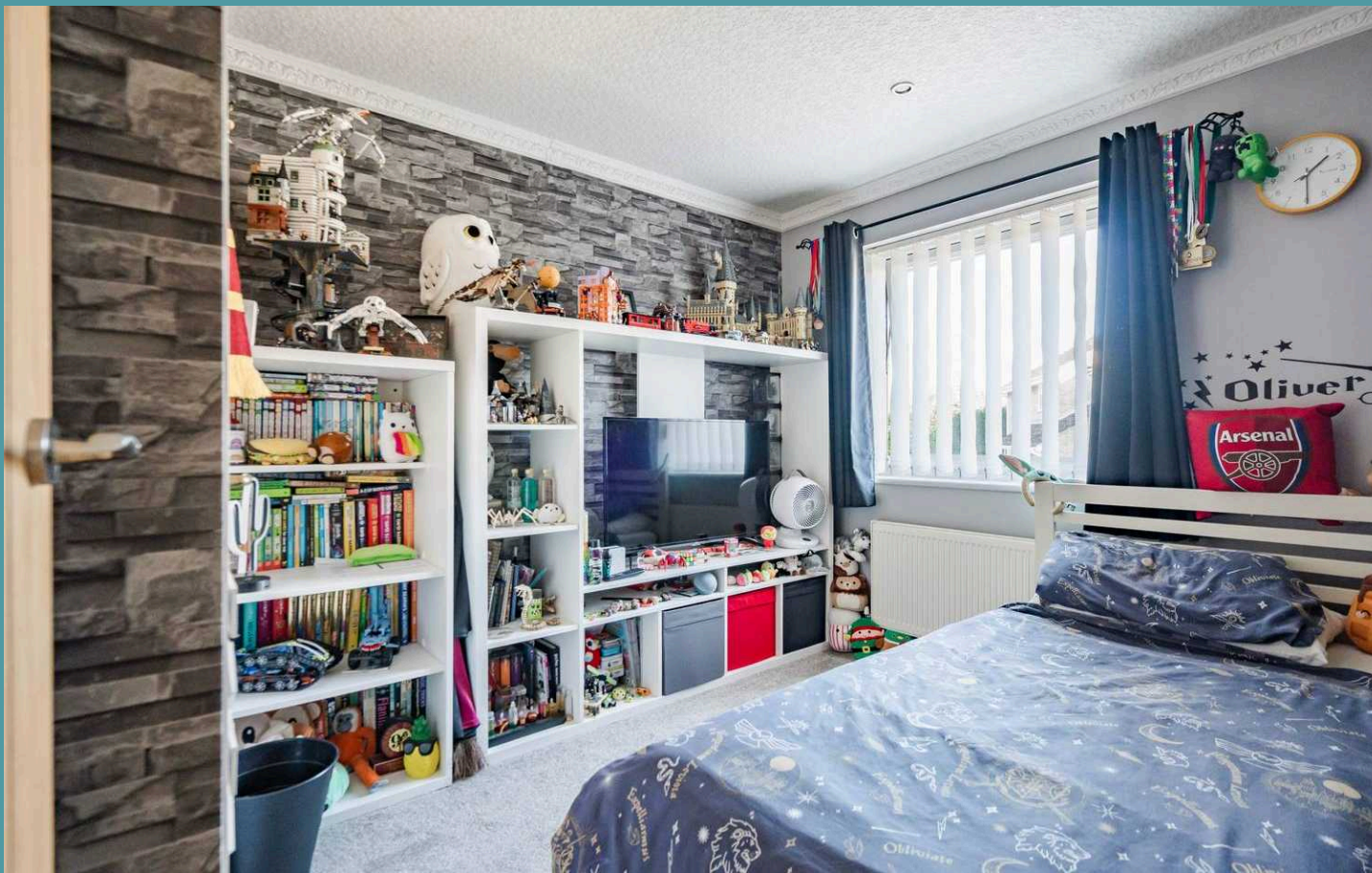
Gunton, Lowestoft

The initial arrival sets a delightful impression for this remarkable detached residence, which continues to impress throughout. The brick-weave driveway provides off-road parking for all residents and visitors, whilst the garage offers storage options.

Welcome into this beautiful family home, where you are greeted by a well-lit entrance hall, completed with a convenient WC. Immediately capturing your attention with its warm and welcoming ambiance is the 20ft sitting room (stms) accentuated by a charming wood burner. This comfortable space is perfect for relaxing and unwinding with loved ones during the evenings. Bi-fold doors open into the conservatory, extending the reception space. It not only draws in an abundance of natural light but also offers panoramic views of the exterior, allowing you to enjoy the outdoors within the comfort of your own home.



At the heart of the home lies an incredible open-plan kitchen/dining room, ensuring effortless interaction when hosting and everyday family living. It is well-equipped with fitted units and integrated appliances to enhance your cooking experience. Complemented by utility room, for your additional storage and laundry essentials.



## 4 Knightswood

Gunton, Lowestoft

Ascend to the first floor, where four well-appointed double bedrooms await, each thoughtfully designed to offer relaxation and privacy. The family bathroom comprises of a newly fitted four piece suite, accommodating all residents in the household.

Stepping outside, the landscaped garden is a sight to behold, featuring a versatile outbuilding that has the option to be a office or home gym, a summerhouse for seating arrangements, and bar that offer endless opportunities for outdoor enjoyment and entertainment. The garden is primarily laid to lawn, with a large patio for summer BBQs or relaxing in the afternoon sunshine. Overall, it is fully enclosed so you can enjoy in seclusion.

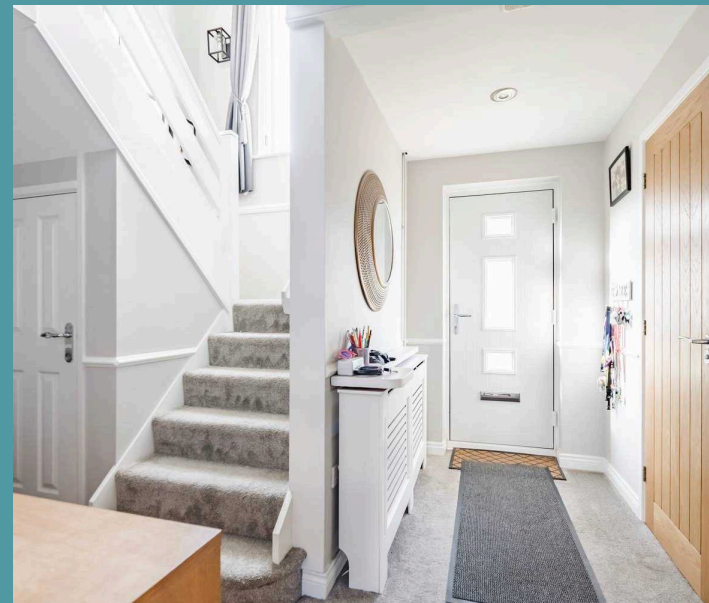
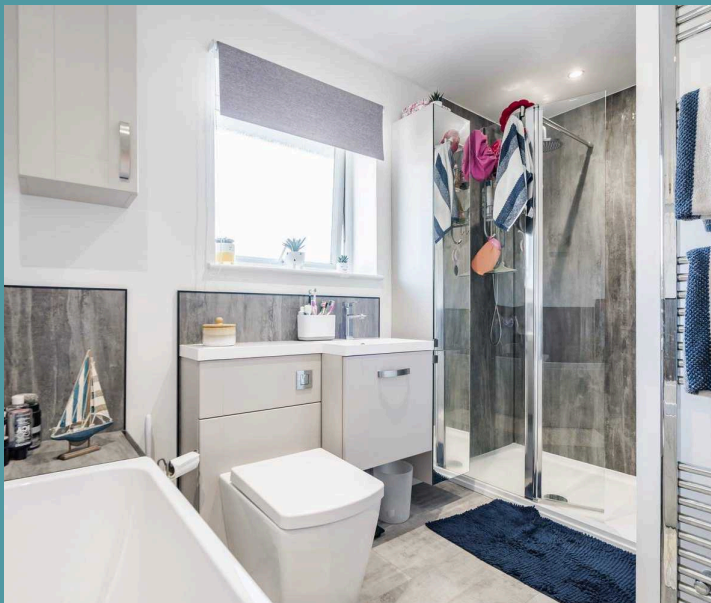
### AGENTS NOTES

We understand that this property is freehold.

Connected to mains water, electricity, gas and drainage.

Heating system - Gas central heating.

Council Tax Band: D

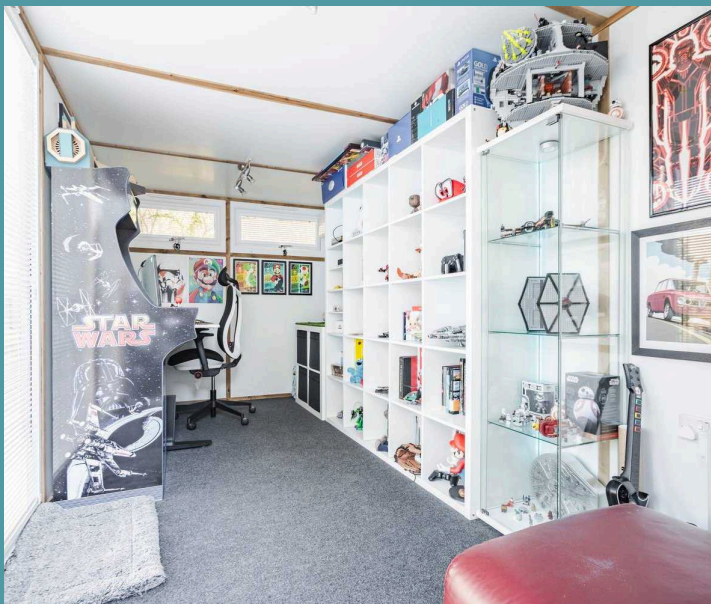




## 4 Knightswood

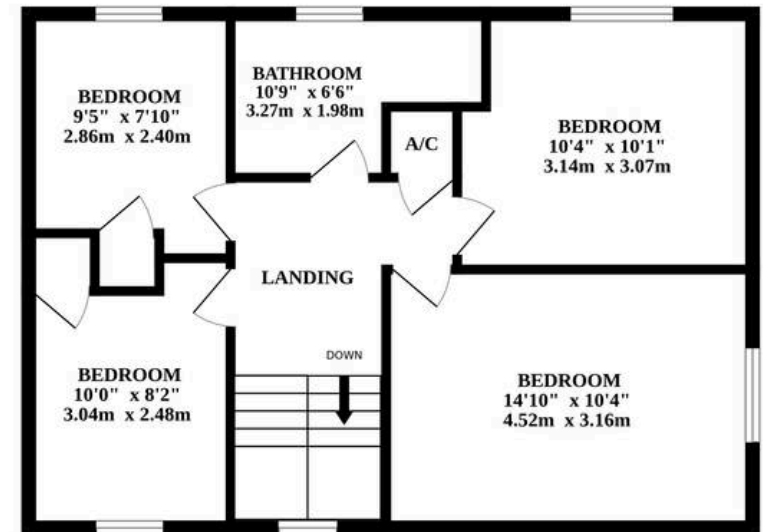
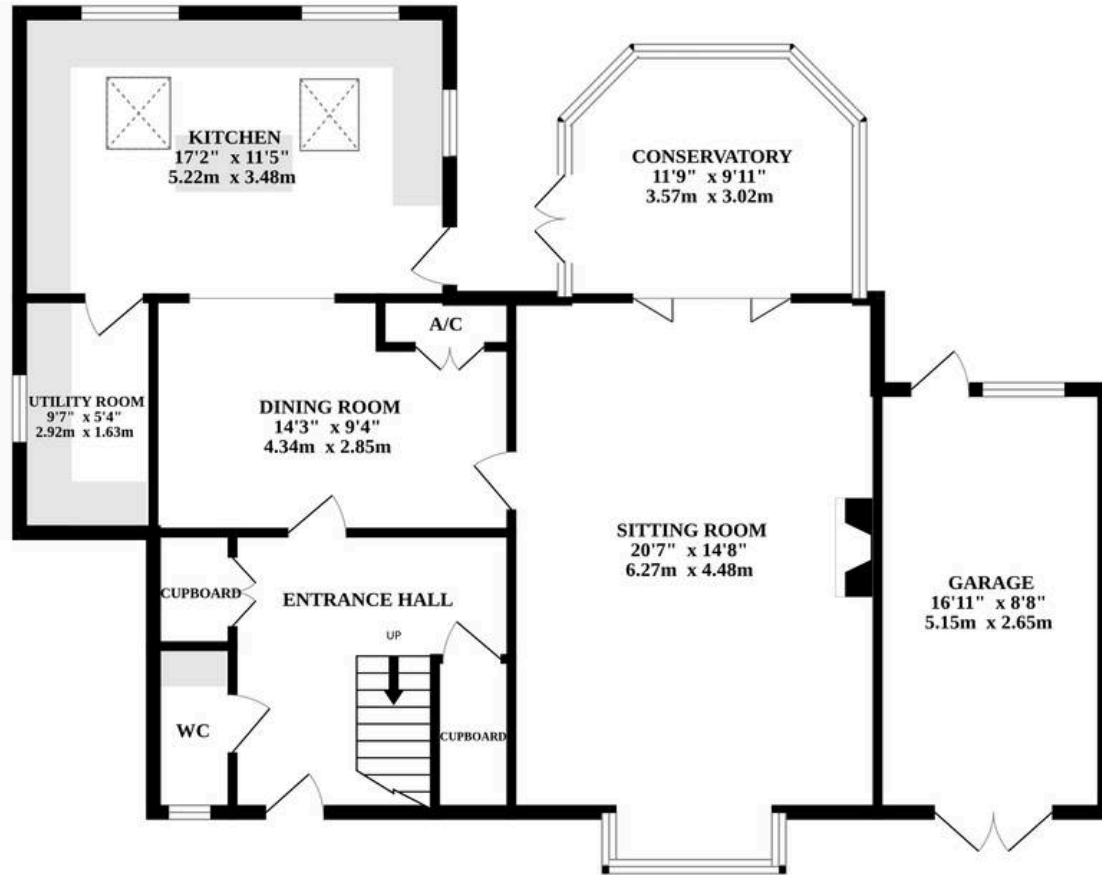
Gunton, Lowestoft

- Extended detached residence - Sitting down a quiet cul-de-sac in Gunton
- Beautiful family home with spacious and versatile accommodation
- 20ft sitting room with wood burner (stms)
- Sun-lit conservatory offering panoramic garden views
- Open-plan kitchen/dining room & a utility room - Modern fixtures and fittings
- Four bedrooms & a newly fitted family bathroom
- Landscaped garden with versatile outbuilding, summerhouse & bar - Fully enclosed for privacy
- Brick-weave driveway providing ample off-road parking & a garage
- In close proximity to all local amenities and natural surroundings - Including schools for all ages



GROUND FLOOR

1ST FLOOR



KNIGHTSWOOD, GUNTON, LOWESTOFT, NR32 4SY



Whilst every attempt has been made to ensure the accuracy of the floorplan contained here, measurements of doors, windows, rooms and any other items are approximate and no responsibility is taken for any error, omission or mis-statement. This plan is for illustrative purposes only and should be used as such by any prospective purchaser. The services, systems and appliances shown have not been tested and no guarantee as to their operability or efficiency can be given.  
Made with Metropix ©2024