

Cavendish Road, London, W4 3TD

£450,000

WHITMAN & CO.

SALES · LETTINGS · COMMERCIAL

- Immaculately presented
- Fantastic transport links
- Located in the heart of Grove Park
- Two bedroom flat
- Tree-lined, residential road
- Low outgoings

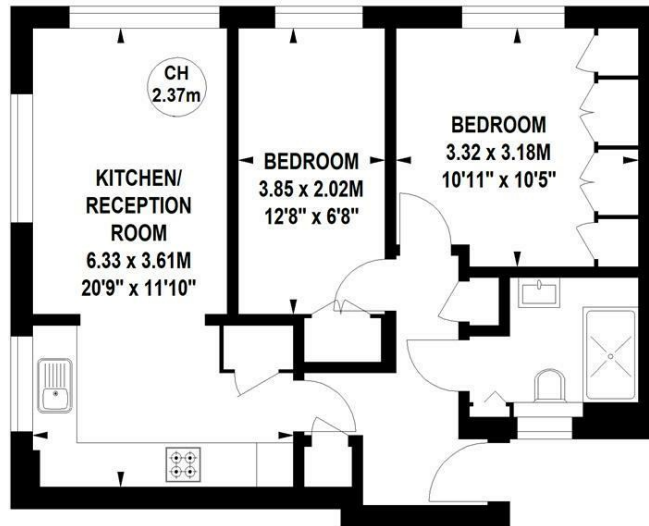
Tenure - Leasehold
 Lease length - 147 years remaining
 Ground rent - £100 pa
 Service charge - £1,104 pa
 Local authority - Hounslow
 Council tax - Band C

Cavendish House, Cavendish Road, W4

Approximate gross internal area

50.07 sq m / 539 sq ft

Key :
 CH - Ceiling Height



Ground Floor

Not to scale, for guidance only and must not be relied upon as a statement of fact.
 All measurements and areas are approximate only

THE PROPERTY

An immaculately presented two bedroom, purpose built, flat ideally situated in this small private development in the heart of Grove Park and opposite extensive playing fields. The property comprises of two bedrooms, a luxurious shower room, a 20' reception room, a fully integrated kitchen, and communal gardens. It also comes with a 147-year lease and low outgoings. Located in this sought-after, tree-lined, residential road offering close proximity to Chiswick (mainline) Station, local shops, Chiswick House and Grounds, and The Riverside walks.

SITUATION



5-7 Turnham Green Terrace, Chiswick, London, W4 1RG

Tel 020 8747 8800

E-mail sales@whitmanandco.com

Website www.whitmanandco.com

