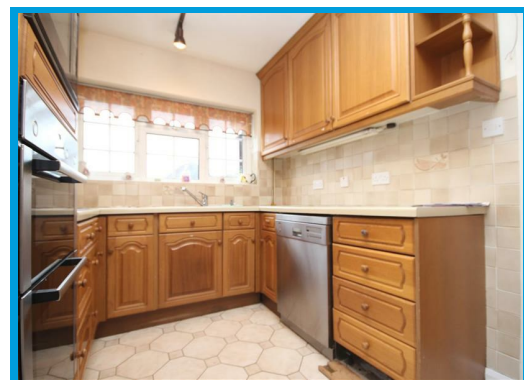
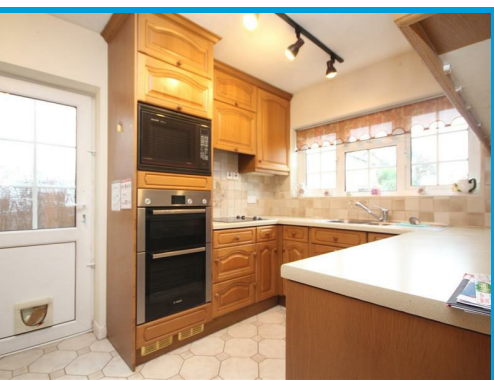




Bridgehill Close, Guildford, Surrey GU2 8BA

£2,750 PCM

****STUDENT ACCOMODATION**** A spacious and well presented four bedroom STUDENT property located moment away from Surrey University and the centre of Guildford.



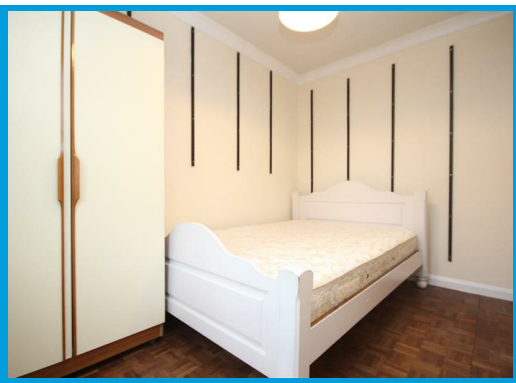
Description

A well presented four double bedroom detached house situated within easy access to Surrey University and walking distance to the town centre.

The accommodation comprises; an entrance hall, downstairs bedroom, fully fitted kitchen, reception room, dining room.

Upstairs there are three double bedrooms, en-suite shower room to the master and a family bathroom.

Other benefits include double glazing, gas central heating, driveway providing off road parking, garage & enclosed rear garden.



Energy Efficiency Rating		Current	Potential
Very energy efficient - lower running costs			
(92 plus) A			
(81-91) B			
(69-80) C			
(55-68) D			
(39-54) E			
(21-38) F			
(1-20) G			
Not energy efficient - higher running costs			
		69	85
England & Wales		EU Directive 2002/91/EC	

Environmental Impact (CO ₂) Rating		Current	Potential
Very environmentally friendly - lower CO ₂ emissions			
(92 plus) A			
(81-91) B			
(69-80) C			
(55-68) D			
(39-54) E			
(21-38) F			
(1-20) G			
Not environmentally friendly - higher CO ₂ emissions			
		65	82
England & Wales		EU Directive 2002/91/EC	

