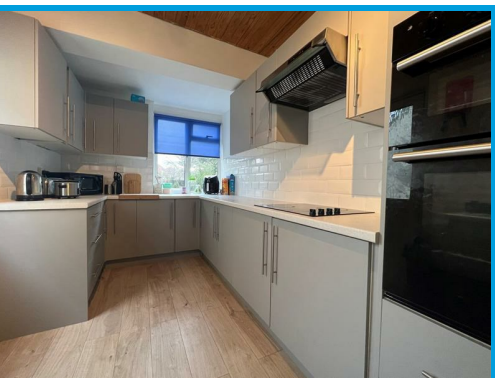




Grantley Road, Guildford Surrey, GU2 8BW

£2,600 PCM

****STUDENT ACCOMODATION**** Located within a popular and quiet residential location close to Guildford town centre and within easy access of Surrey University, this three/ four bedroom house is presented in excellent order throughout and benefits from a new kitchen.



Description

FOUR BEDROOM STUDENT HOUSE Located within a popular and quiet residential location close to Guildford town centre and within easy access of Surrey University, this four bedroom house is presented in excellent order throughout.

Downstairs the property comprises an entrance hall leading to a good size lounge, a downstairs bedroom, cloakroom and a modern kitchen.

Upstairs the property comprises three further bedrooms and a bathroom with a separate shower cubicle.

Further features include off street parking and a private garden.

