



33 Muriel Kenny Court, Hethersett

Offers in Region of £260,000

33 Muriel Kenny Court

Hethersett, Norwich

This semi-detached house presents an excellent opportunity to acquire a beautiful family home in a desirable location. Boasting spacious and versatile accommodation, this property is sure to satisfy the needs of a growing family seeking both comfort and convenience. With its welcoming atmosphere, well-presented interiors, and convenient location, this property is one you would not want to miss.

LOCATION

Hethersett is a village located in Norfolk, approximately 6 miles south of the city of Norwich. The village is well-connected by road, with the A11 and A47 major routes providing access to nearby towns and cities. Hethersett is largely a residential community, with a mix of traditional housing and newer developments. The village is known for its rural charm and is surrounded by countryside, offering a peaceful setting for its residents. The local amenities include schools, shops, and leisure facilities, while the village also has good public transport links to Norwich.





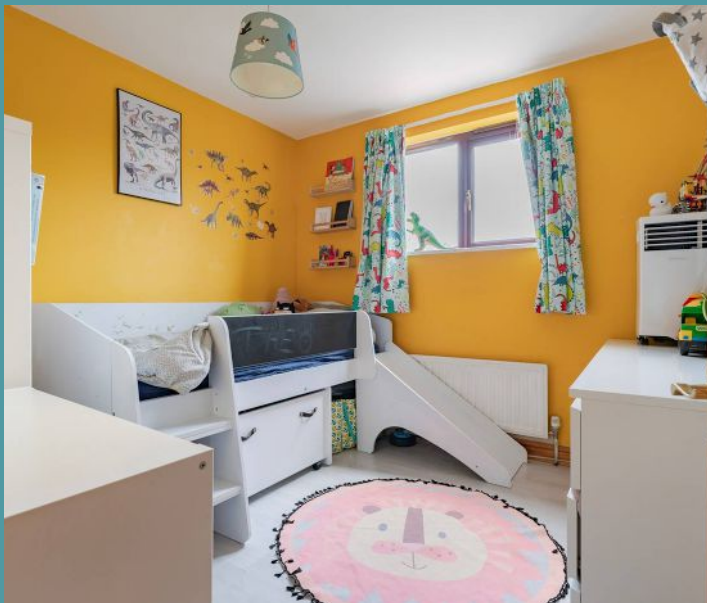
33 Muriel Kenny Court

Hethersett, Norwich

Upon entering the residence, you are welcomed by a bright and airy entrance hall, providing a warm reception for residents and guests. A convenient WC is located off the entrance hall, ensuring practicality and ease of access for visitors. The comfortable sitting room is filled with an abundance of natural light, creating a warm and inviting ambiance for unwinding with loved ones.

The heart of this home lies in the newly fitted kitchen, fitted with units and integrated appliances to enhance your cooking experience. Offering plenty of storage and counter-top space for meal preparation. The adjoining dining room is perfect for intimate family meals or gathering with guests.

Ascend to the first floor where you will encounter three well-appointed bedrooms, each thoughtfully designed to offer relaxation and privacy. The study has the versatility to be a dressing room, storage or a dedicated space for work. The bathroom completes the upper floor, comprising of a three piece suite that accommodates all residents.





33 Muriel Kenny Court

Hethersett, Norwich

Towards the rear you'll find a well-maintained garden that is south-facing. It offers endless possibilities for outdoor activities and enjoyment, including gardening, summer BBQs or simply relaxing in the afternoon sunshine. With the addition of a wooden shed for storing your garden equipment and tools. Overall, it is fully enclosed so you can enjoy in seclusion.

AGENTS NOTES

We understand that this property is freehold.

Connected to mains water, electricity, gas and drainage.

Heating system - Combi boiler.

Council Tax Band: B





33 Muriel Kenny Court

Hethersett, Norwich

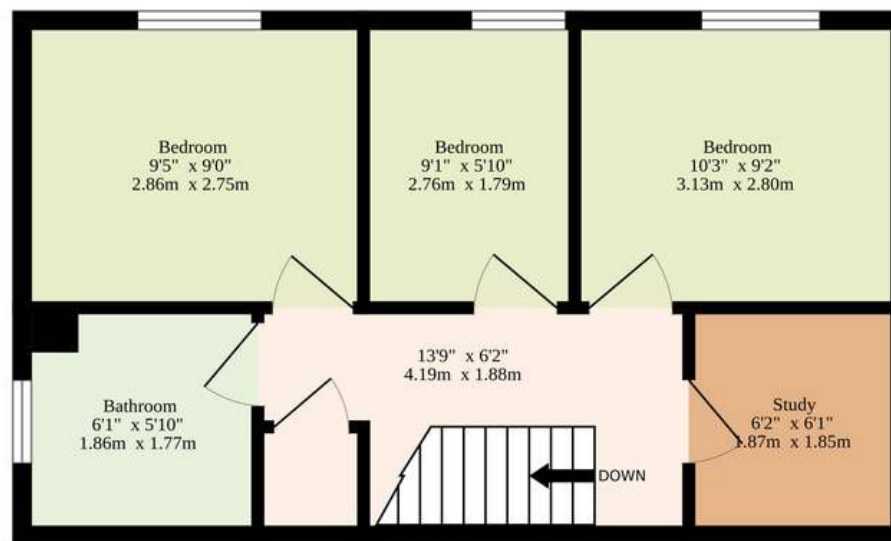
- Semi-detached residence in the village of Hethersett
- Beautiful family home with spacious and versatile accommodation
- Overlooking a communal green
- Welcoming entrance hall with a convenient WC
- Newly fitted kitchen & a dining room to encourage family gatherings
- Comfortable sitting room filled with an abundance of natural light
- Three bedrooms, a study & a family bathroom
- Well-maintained south-facing garden, fully enclosed for privacy
- Off-road parking available
- Close proximity to a Tesco express, church, doctors surgery, shops, restaurants, Hethersett Academy and primary school



Ground Floor
385 sq.ft. (35.8 sq.m.) approx.



1st Floor
389 sq.ft. (36.1 sq.m.) approx.



TOTAL FLOOR AREA : 774 sq.ft. (71.9 sq.m.) approx.

Whilst every attempt has been made to ensure the accuracy of the floorplan contained here, measurements of doors, windows, rooms and any other items are approximate and no responsibility is taken for any error, omission or mis-statement. This plan is for illustrative purposes only and should be used as such by any prospective purchaser. The services, systems and appliances shown have not been tested and no guarantee as to their operability or efficiency can be given.

Made with Metropix ©2024

