

Location:

Larden Road is centrally located close to the amenities of Acton and Shepherd's Bush. Both Acton Central and Acton Main Line stations are close by for links to and from central London.

Key points:

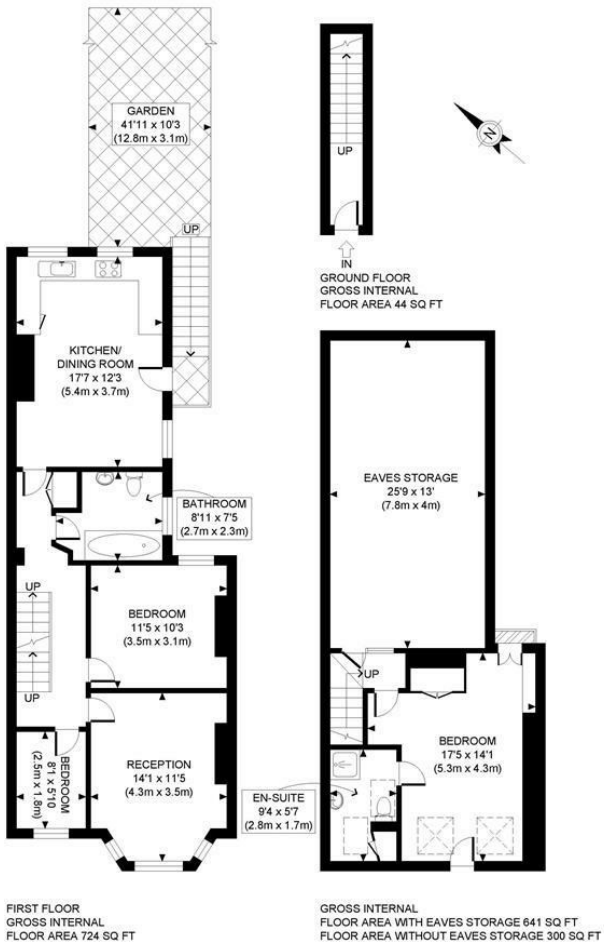
- 3 Bedrooms
- 1,088 sqft
- No onward chain
- Private garden
- Share of freehold
- Eaves storage
- Own front door

Do Better:

Acton
sales@astonrowe.co.uk

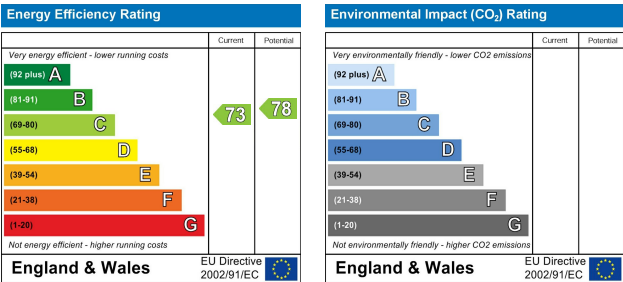
57-59 Churchfield Road,
Acton, London, W3 6AY

020 8992 3600



PROPERTY PHOTO PLANS .CO.UK
ONE STOP SHOP FOR PROPERTIES MARKETING

This plan is for illustrative purposes only and should be used as such by any prospective client. Whilst every attempt has been made to ensure the accuracy of the Floor Plan contained here, measurements of the doors, windows, rooms and any other items are approximate and no responsibility is taken for any errors, omissions, or misstatement. The services, systems and appliances shown have not been tested and no guarantee as to the operability or efficiency can be given.



Asking Price £625,000

Larden Road, London W3 7SX

- 1 Reception Rooms
- 3 Bedrooms
- 2 Bathrooms



The current owner says:

The apartment benefits from wonderful period features and high ceilings.

A split level three bedroom apartment comprising over 1,088 sq ft. Situated on Larden Road moments walk away from Wendell Park and Churchfield Road. This beautiful home would be ideal for a first time buyer or buy to let investor, the property benefits from three bedrooms, separate kitchen/dining room family bathroom, en-suite bathroom and private garden. The property has lovely high ceilings and wonderful period features and is in need of modernising throughout and benefits from a share of freehold and offers no onward chain.

Larden Road is a beautifully tranquil tree-lined road which is conveniently located close by to the wonderful green open spaces of Acton Park and Wendell Park. An array of shops, cafes, restaurants and amenities can be found on the nearby Churchfield Road and Acton High Street. The nearest transport links are Acton Central (Overground station), Acton Main station (Elizabeth line) and Turnham Green station (District line and Piccadilly line).

What's better:

A three bedroom split level apartment with garden in W3.

