



16 Manor Road, North Walsham  
£290,000

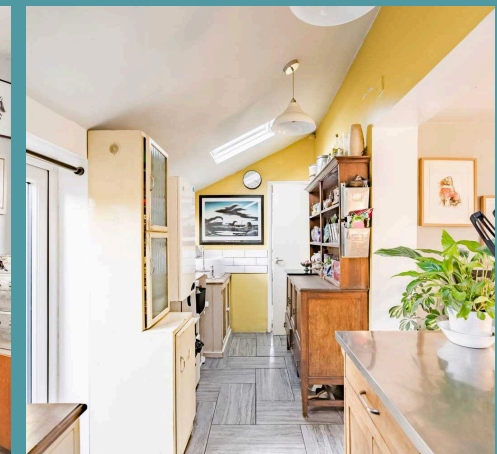
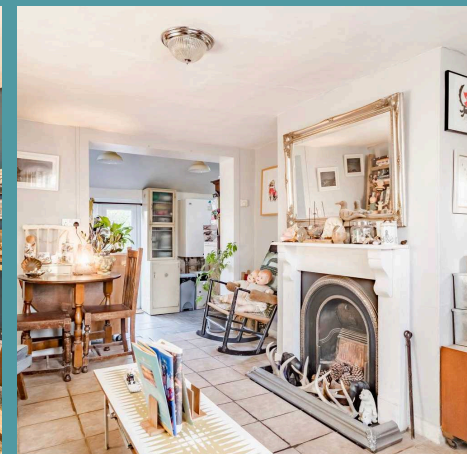
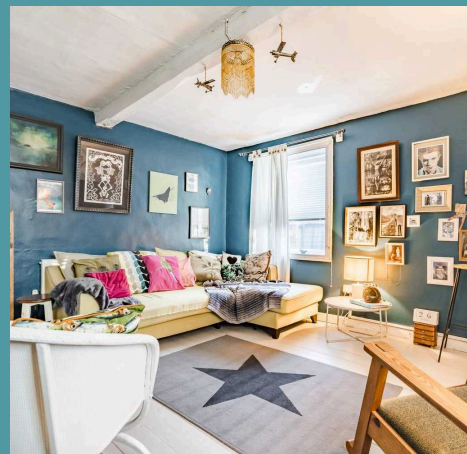
# 16 Manor Road

North Walsham

This end-terrace home, approximately 150 years old, offers a perfect mix of period character and modern features. The expansive garden, with its spring bulbs, perennials and mature apple trees, provides a peaceful outdoor space. Inside, the property retains original features like a feature fireplace, latch doors and a curved wooden staircase, alongside a contemporary kitchen and stylish bathroom. With two double bedrooms, a detached garage, and a laundry room, this home offers both practicality and appeal.

## The Location

Manor Road is located in the heart of North Walsham, a charming market town in Norfolk. Situated just 10 miles from the beautiful Norfolk coastline, this home offers both convenience and tranquility. The town is well-served by local amenities, including shops, schools and restaurants, all within easy walking distance. North Walsham also benefits from excellent transport links, with a train station offering direct services to Norwich, just 14 miles away, and easy access to the A149 and A140 roads, making it a perfect base for those commuting or exploring the surrounding countryside.





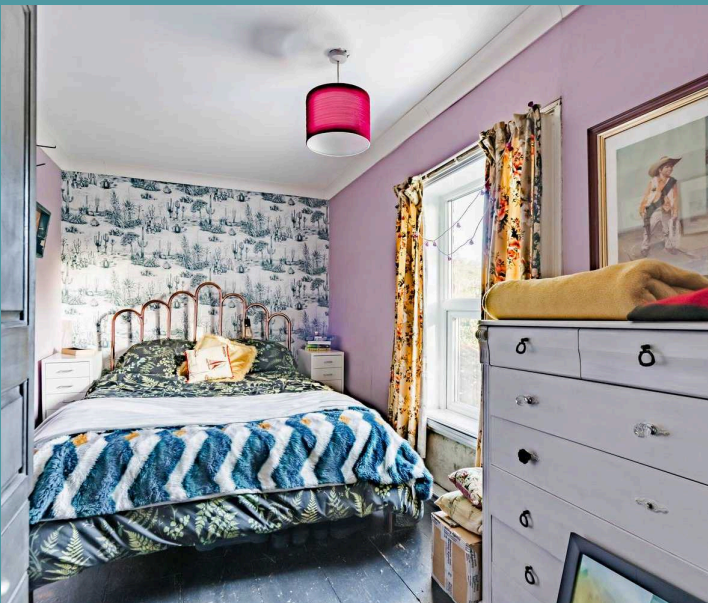
## 16 Manor Road

North Walsham

### Manor Road

Tucked away in the friendly town of North Walsham, this charming end-terrace home, approximately 150 years old, exudes character and warmth. From the moment you arrive, you'll be captivated by the property's inviting atmosphere and its extensive, beautifully maintained garden. Blooming with spring bulbs and perennials, this outdoor space features mature apple trees and offers the perfect environment for gardeners or those seeking an outdoor lifestyle. A detached brick garage, complemented by a laundry room with plumbing, adds practicality to this home.

Inside, the ground floor greets you through a charming dining room, complete with a feature fireplace, leading into the bright and airy kitchen with two Velux windows that flood the space with natural light. From the dining room, you'll find access to a sunny sitting room, where original features such as charming latch doors and a discreet, curved wooden staircase tucked behind a door add character. The stylish ground-floor bathroom, with its patterned flooring and polished chrome fixtures, offers a modern touch that blends seamlessly with the home's traditional cottage appeal.





## 16 Manor Road

North Walsham

Upstairs, the character continues with two double bedrooms, each offering comfort and views over the surrounding neighbourhood.

Every inch of this home is steeped in charming features, making it the perfect choice for anyone seeking a blend of modern living and rustic charm.

In a welcoming and friendly community, this property is truly a gem that promises a lifestyle both indoors and out.

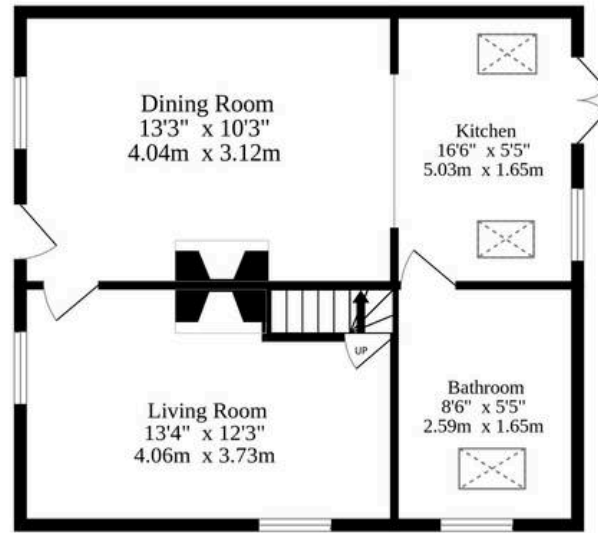
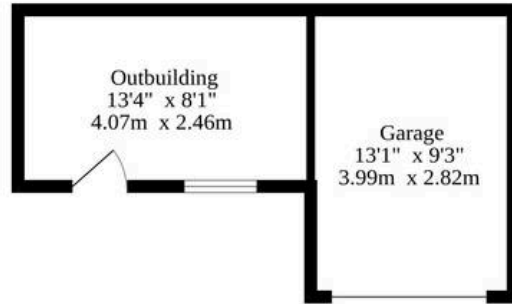
Agents Note

Sold Freehold

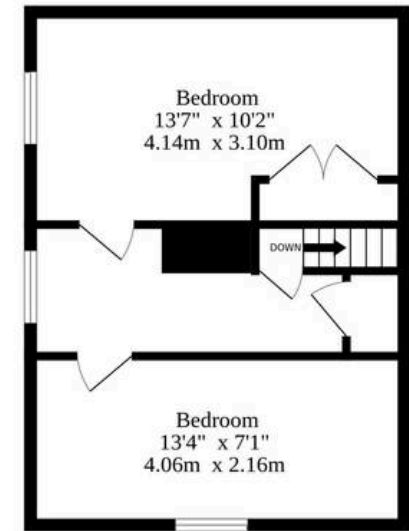
Council Tax - B



Ground Floor



1st Floor



Whilst every attempt has been made to ensure the accuracy of the floorplan contained here, measurements of doors, windows, rooms and any other items are approximate and no responsibility is taken for any error, omission or mis-statement. This plan is for illustrative purposes only and should be used as such by any prospective purchaser. The services, systems and appliances shown have not been tested and no guarantee as to their operability or efficiency can be given.  
Made with Metropix ©2024

