



Palmer & Partners



Palmer & Partners

The Street, Sternfield, Suffolk, IP17 1ND

Asking Price: £425,000

The Street, Sternfield, Saxmundham, Suffolk, IP17 1ND

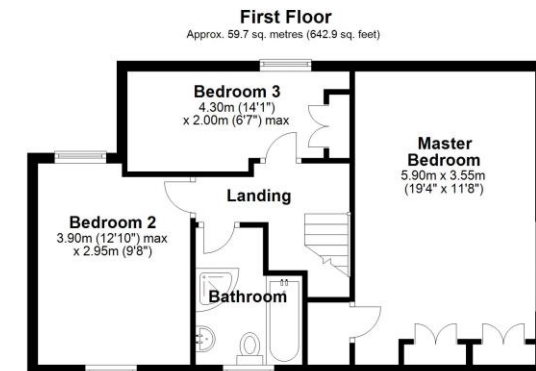
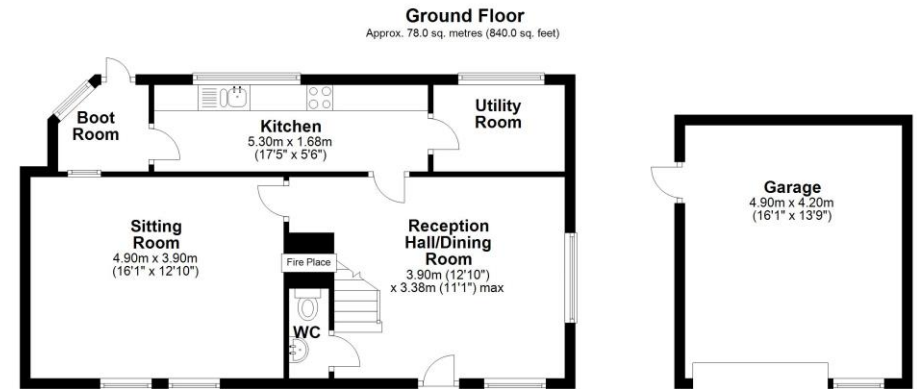
Palmer & Partners are delighted to present to the market this former school which dates back to 1875 and has been extended and updated over the years whilst retaining many original period features. Located in the idyllic village of Sternfield, this charming, detached character cottage has been in the current family for nearly 40 years and benefits from off-road parking, garage, and stunning rear garden which is a particular selling feature and includes a useful shepherds hut. The deceptively spacious cottage has been beautifully maintained, offers lovely views from the first floor accommodation and comes with secondary double glazing throughout and oil fired central heating. As agents, we recommend the earliest possible viewing to fully appreciate the location and the size of the accommodation on offer which comprises reception hall / dining room, ground floor cloakroom, generous sitting room with multi-fuel stove, stylish refitted kitchen, boot room and utility room, first floor landing, 19ft master bedroom, two further bedrooms, and a refitted four piece family bathroom.

Sternfield is a popular village within walking distance of Saxmundham, which has rail links to London Liverpool Street, and just a short drive to the Suffolk Coastal towns of Aldeburgh, Southwold and Walberswick.

Council tax band: E

Accommodation & Amenities

- Deceptively Spacious Detached Cottage Dates Back to 1875
- Three Bedrooms & Two Reception Rooms
- Stylish Refitted Kitchen & Bathroom
- Utility Room & Boot Room
- Off-Road Parking & Garage
- Stunning Rear Garden with Shepherds Hut



Total area: approx. 137.8 sq. metres (1482.9 sq. feet)

Although every attempt has been made to ensure the accuracy of this floorplan measurements of doors, windows, rooms and any other items are approximate and no responsibility is taken for any error, omission or mis-statement. This plan is for illustrative purposes only.
Plan produced using PlanUp.



