



Parklands Drive, London N3 3HA

**WAYNE
& SILVER**

Parklands Drive, London N3 3HA

A detached seven-bedroom house situated in a highly sought after turning in Finchley. Offering extensive living space over three floors the house comprises of a large entrance hallway, spacious living/dining room with solid Parquet flooring throughout, large conservatory leading to rear garden, fully integrated eat-in kitchen, utility room, plant room, seven double bedrooms all with en suites and a wardrobe area to the master bedroom.

Further benefits include a garage, currently being occupied as a studio flat and a spacious carriage driveway with ample parking. The house offers further scope to extend subject to usual planning consents.

Parklands Drive is located off Crooked Usage, a short distance from all of the local amenities and travel links that both Finchley and Temple Fortune high streets afford.

Sole Agents.
Council: Barnet
Tax Band: H



Guide price: £2,850,000

Tenure: Freehold

Service Charge: Add text here

Local Authority: Barnet

Council Tax Band: H





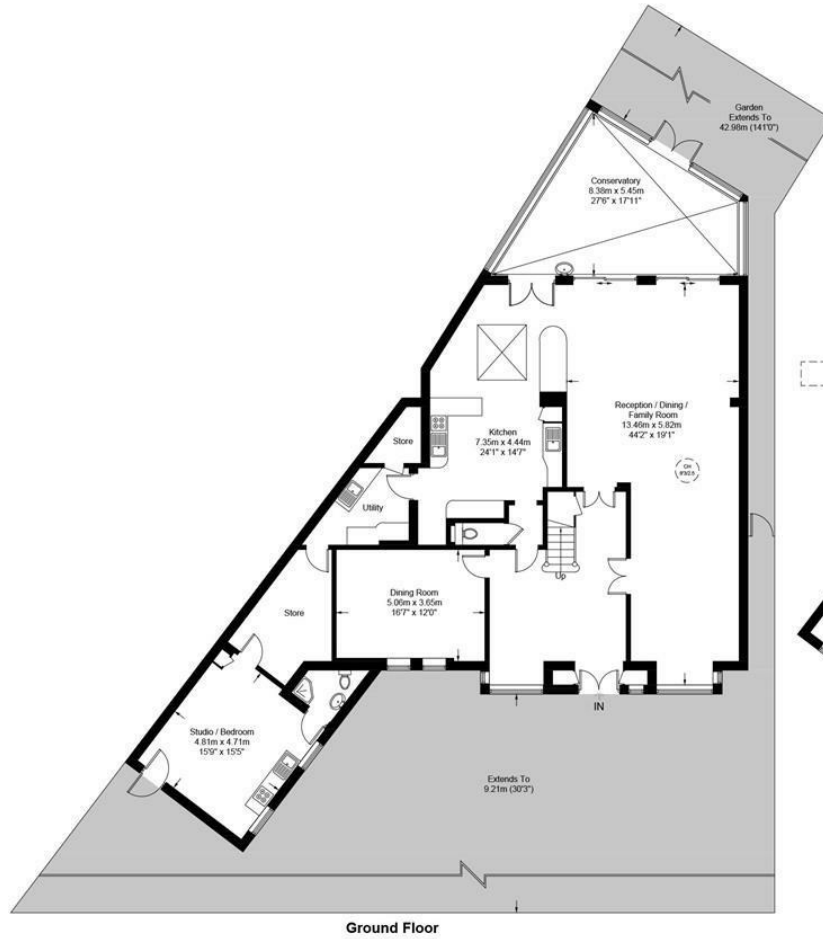






Parklands Drive, N3

Approximate Gross Internal Area = 4510 sq ft / 419 sq m
(Excluding Reduced Headroom)
Reduced Headroom = 100 sq ft / 9.3 sq m
Total = 4610 sq ft / 428.3 sq m



This plan is for layout guidance only. Not drawn to scale unless stated. Windows and door openings are approximate. Whilst every care is taken in the preparation of this plan, please check all dimensions, shapes and compass bearings before making any decisions reliant upon them. (ID897265)

41 Heath Street
Hampstead
London
NW3 6UA

We would be delighted to tell you more
020 7431 4488
info@wayne-silver.com