

Durnsford Road Wimbledon, SW19 8HQ

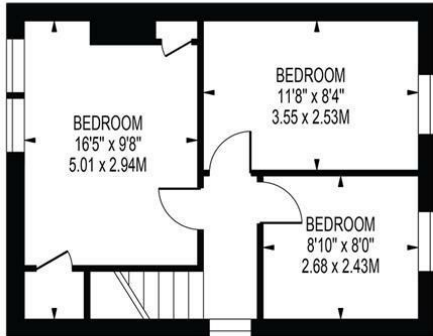
£2,250 PCM



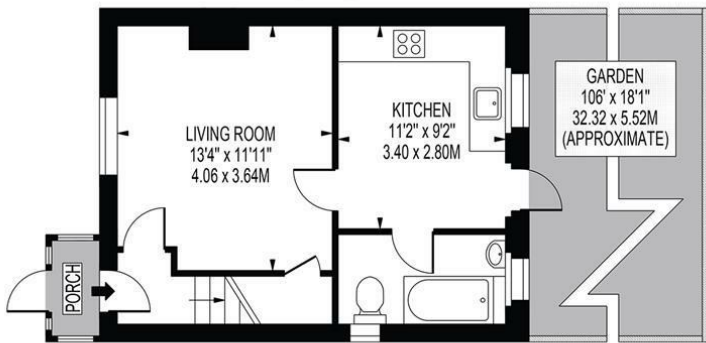
Three bedroom end of terrace house with OFF STREET PARKING, side access and a large private garden. The property has just been decorated throughout, features new double glazed windows throughout and features newly fitted LTV flooring. Located just five minutes walk from Haydons Road train station, 13 minutes walk of Wimbledon Park underground (district line) and close to local shops.
EPC band E. Council tax band D.

DURNSFORD ROAD

APPROXIMATE GROSS INTERNAL FLOOR AREA: 702 SQ FT - 65.19 SQ M



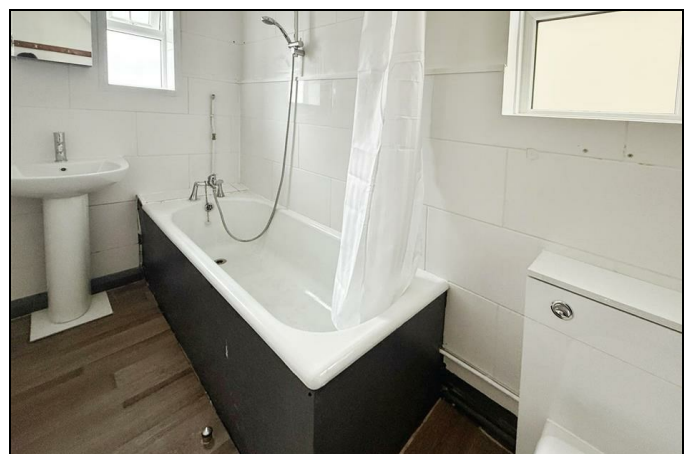
FIRST FLOOR



GROUND FLOOR

FOR ILLUSTRATION PURPOSES ONLY

THIS FLOOR PLAN SHOULD BE USED AS A GENERAL OUTLINE FOR GUIDANCE ONLY AND DOES NOT CONSTITUTE IN WHOLE OR IN PART AN OFFER OR CONTRACT. ANY INTENDING PURCHASER OR LESSEE SHOULD SATISFY THEMSELVES BY INSPECTION, SEARCHES, ENQUIRIES AND FULL SURVEY AS TO THE CORRECTNESS OF EACH STATEMENT. ANY AREAS, MEASUREMENTS OR DISTANCES QUOTED ARE APPROXIMATE AND SHOULD NOT BE USED TO VALUE A PROPERTY OR BE THE BASIS OF ANY SALE OR LET.



- Three bedroom end of terrace house
- Off Street Parking
- Large private garden
- New carpets & LVT flooring
- Ground floor bathroom
- First months rent in advance
- Five week's security deposit
- One week's holding deposit
- EPC band E
- Council tax band D

Energy Efficiency Rating		Current	Potential
Very energy efficient - lower running costs			
(92 plus) A			
(81-91) B			
(69-80) C			
(55-68) D			
(39-54) E			
(21-38) F			
(1-20) G			
Not energy efficient - higher running costs			
		53	80
England & Wales		EU Directive 2002/91/EC	



Although these particulars are believed to be correct, their accuracy is not guaranteed and they do not form part of any contract.

Celebrating 30 years of successful Sales and Lettings in Merton

