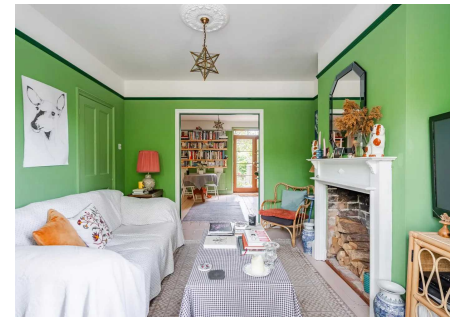


198 Bridge Road, Lowestoft

£280,000 Freehold

A stunning three bedroom, end of terrace in the sought-after area of Oulton Broad. Boasting period features, open plan living, a large garden with garden room, and off-road parking for four. A well-connected location for families seeking comfort, style, and practicality. Call the Lowestoft office for more information!

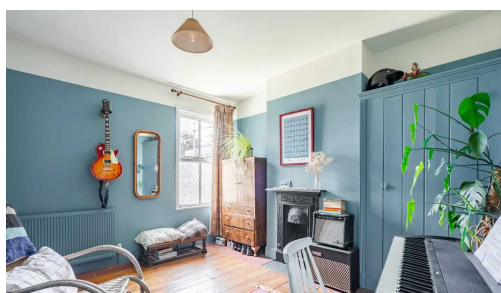
Oulton Broad is a wonderful area of Suffolk close to the popular seaside town of Lowestoft. It is one of the finest stretches of inland water in the UK and forms the southern gateway to the Broads National Park. A popular place to come for water sports such as; sailing, canoeing, rowing & boating as well as pampering & self-indulgence sessions in restaurants, cafes, pubs, wine bars, shops & health & beauty salons. Oulton Broad is well connected with 2 train stations nearby offering direct services to Norwich and Ipswich, with fast and frequent transfers directly to London.



AGENTS NOTE

We understand the property will be sold freehold and connected to all mains services.

Council tax band - B.

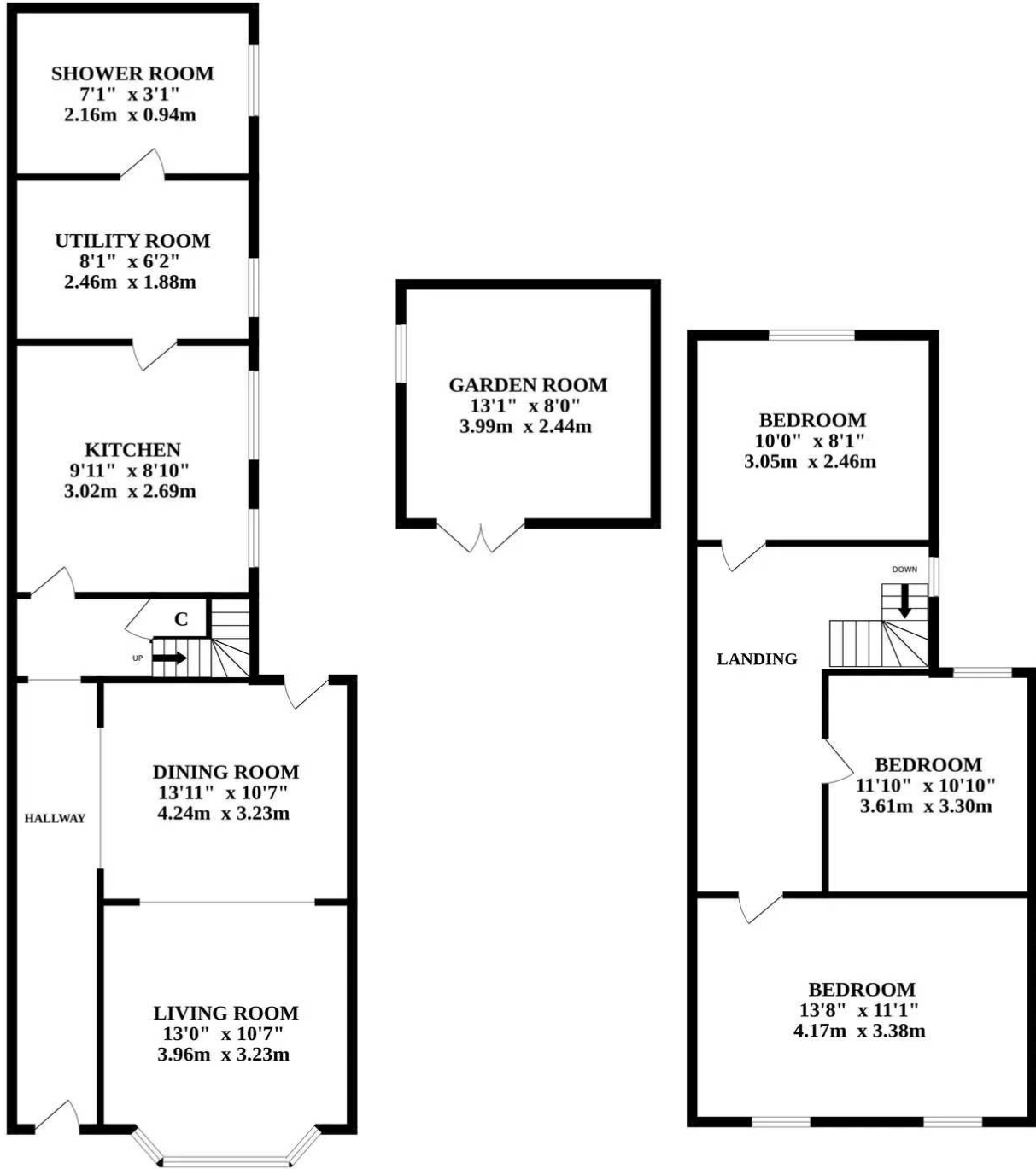


We are pleased to present this stunning three-bedroom end of terrace property, boasting a bright and stylish interior with a wealth of period features throughout. The open plan living room and dining room create an inviting space for both relaxation and entertaining with a door to the patio area of the garden. The well-equipped kitchen, complemented by a utility room, offers convenience and functionality for every-day living. The ground floor bathroom adds practicality to this charming home.

Upstairs, three sizeable bedrooms provide comfort and privacy for the whole family, with two of bedrooms boasting feature fireplaces. Furthermore, the property features a private large garden and a versatile garden room, offering additional living space and endless potential for various uses such as a home office.

In addition, the property benefits from off-road parking for up to four vehicles, ensuring convenience for residents and visitors alike, a rare feature in such a prime location. Situated in a sought-after location close to Oulton Broad amenities, this beautiful family home presents an ideal opportunity for those seeking a combination of comfort, style, and practicality in a well-connected setting.





Whilst every attempt has been made to ensure the accuracy of the floorplan contained here, measurements of doors, windows, rooms and any other items are approximate and no responsibility is taken for any error, omission or mis-statement. This plan is for illustrative purposes only and should be used as such by any prospective purchaser. The services, systems and appliances shown have not been tested and no guarantee as to their operability or efficiency can be given.
Made with Metropix ©2024

