



Northwood Road, Highgate, N6

£575,000

Share of Freehold



44 highgate high street, highgate village, london, n6 5hx

telephone 020 8348 8000 facsimile 020 8348 8232

email highgate@litchfields.com web litchfields.com

offices also in hampstead garden suburb



CHAIN FREE. Litchfields are pleased to offer a super garden flat presented for sale in excellent condition. It has its own private entrance, share of freehold and private rear garden. The flat offers well balanced accommodation on one level and benefits from under-floor heating under the walnut wooden flooring in the hallway reception and both bedrooms. The kitchen has integrated units including fridge/freezer, washer/dryer and dishwasher. There is a second reception room/conservatory with folding doors onto the patio and rear garden. There are 2 sizeable overhead storage areas in the flat. The rear garden is partly paved, mainly lawned and has a shed with lighting and electricity. There is outdoor lighting front and back. The flat is within 500 yards of Highgate underground station and within 100 yards of local shops and buses. EPC - E



 litchfields



 litchfields



 litchfields



 litchfields



Chain Free Share of Freehold
Own Private Entrance
Reception Room
2nd Reception/conservatory
2 Double bedrooms
Open-plan Kitchen
Bathroom
Private rear garden
Close to local shops
Close to Transport and Parkland Walk
EPC - E



Northwood Road

Approximate Gross Internal Area = 742 sq ft / 68.9 sq m

Vault = 15 sq ft / 1.4 sq m

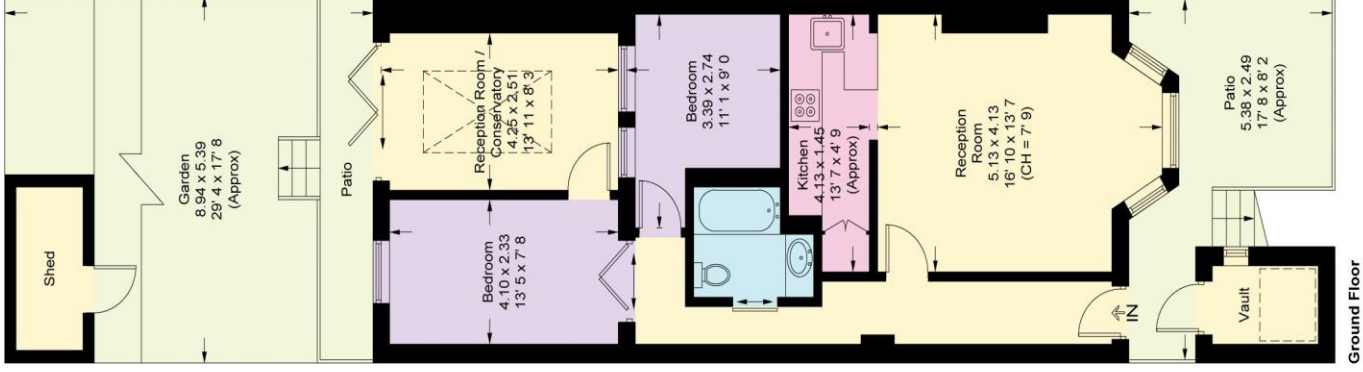
(Excluding Reduced Headroom)

Reduced Headroom = 12 sq ft / 1.1 sq m

Total = 769 sq ft / 71.4 sq m



 = Reduced headroom below 1.5m / 5'0"



This plan is not to scale and must be used as layout guidance only. All measurements and areas are approximate and should not be relied upon to provide accurate information. This plan must not be relied upon when making property valuations, design considerations or any other such relevant decisions. We accept no responsibility or liability (whether in contract, tort or otherwise) in relation to any loss whatsoever arising from or in connection with any use of this plan or the adequacy, accuracy or completeness of it or any information within it.