

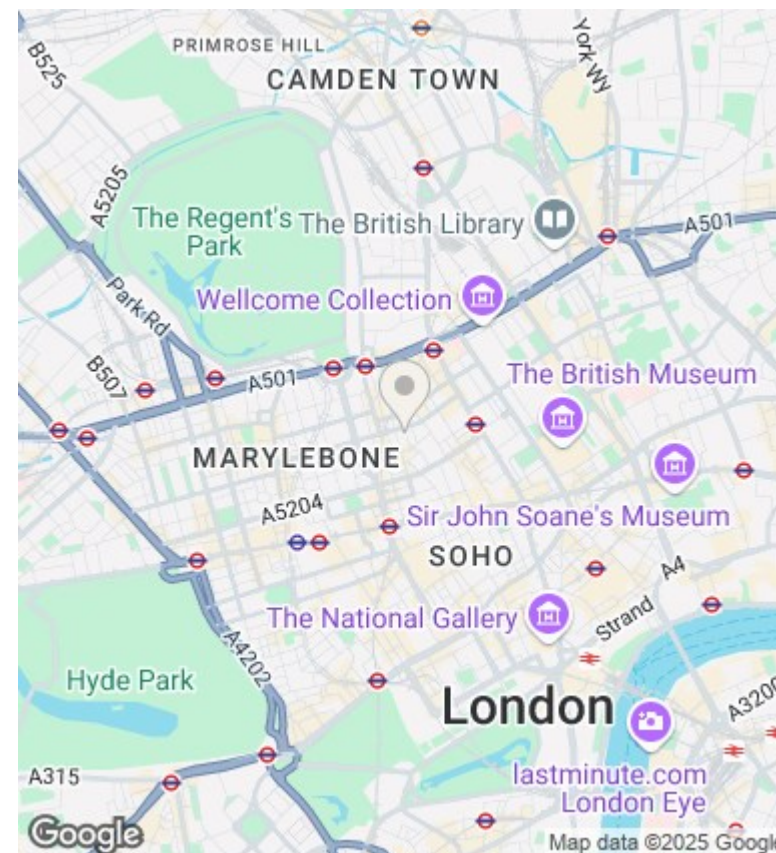
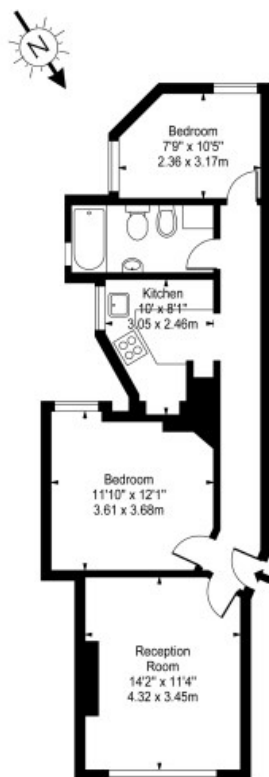


Hanson Street, Fitzrovia W1W 6TW

£2,700 PCM

- Video viewing available
- Newly refurbished
- Pet Friendly
- Separate fully fitted kitchen
- Moments way from Regents Park
- Walking distance to Warren Street and Goodge Street stations
- Easy commute to all London universities

23 Hanson Street, W1W
 Approx. Gross Internal Area 610 Sq Ft - 56.67 Sq M



Viewings

Viewings by arrangement only.
 Call 02077225022 to make an appointment.

Council Tax Band

D

EPC Rating:

Energy Efficiency Rating		
	Current	Potential
<i>Very energy efficient - lower running costs</i>		
(92 plus) A		
(81-91) B		
(69-80) C		
(55-68) D		
(39-54) E		
(21-38) F		
(1-20) G		
<i>Not energy efficient - higher running costs</i>		
England & Wales	EU Directive 2002/91/EC	