



34 The Gables, North Walsham

£160,000 Leasehold

A stunning three bedroom park home finished to a luxurious standard with picturesque field views. Located in the enviable town of North Walsham, close to amenities and the Train Station for easy access. Boasting an open plan living area with a contemporary kitchen and bi-fold doors, modern ensuite bathrooms and a terrace which currently houses a hot tub. Perfect for those looking for a turn-key investment opportunity or holiday home. Schedule viewing now!

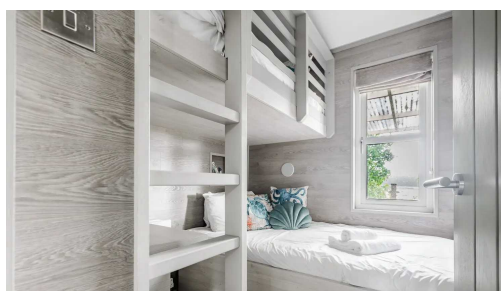
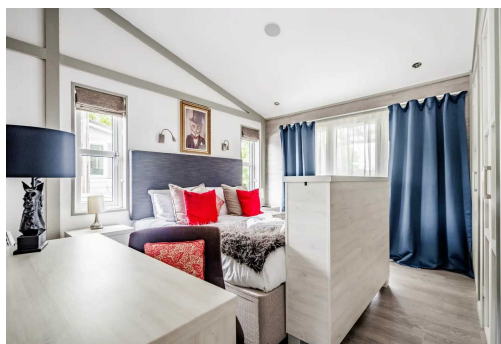
North Walsham is a bustling market town offering schooling for all ages, easy access to the city and also the North Norfolk coast plus all essential shops and amenities plus its local train station which is approx 0.8 miles away. You can walk to attend a weekly market in the town centre, a range of supermarkets, GP surgeries, parks and schools for all ages are also available. You can find the UEA, Science park & University hospital around 18 miles away, 12 miles to Norwich Airport, 15 miles to Norwich Railway Station giving access to London and further afield plus 8.3 miles to Cromer.



AGENTS NOTE

We understand the property will be sold leasehold and connected to all mains services.

Please note, this property cannot be your main residence.



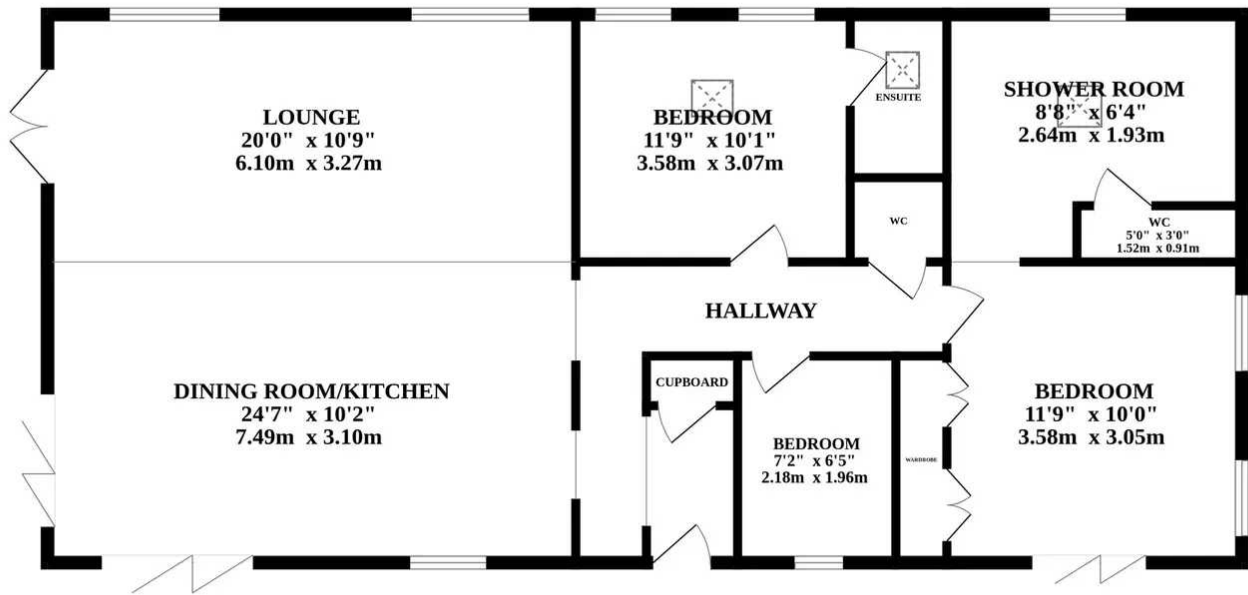
Nestled in a serene location, this exquisite property offers a luxurious retreat for those seeking comfort and style. Boasting three tastefully designed bedrooms, this residence is meticulously finished to a high standard throughout, exuding elegance and sophistication. The interior is thoughtfully crafted to maximise natural light, creating a warm and inviting ambience.

The heart of the home is the expansive open-plan living area, complete with bi-fold doors leading to the terrace, allowing for seamless indoor-outdoor living. The contemporary kitchen is well-equipped with ample storage, modern appliances, and a convenient breakfast bar for casual dining.

Two of the three bedrooms feature luxurious ensuite bathrooms, providing a private sanctuary for relaxation. The terrace offers spectacular field views, perfect for unwinding and entertaining guests and currently houses a hot tub.

This property presents a turn-key investment opportunity and is an ideal choice for those seeking a beautiful holiday home. Don't miss the chance to own this stunning property and immerse yourself in a lifestyle of comfort and luxury. Schedule a viewing today!





Whilst every attempt has been made to ensure the accuracy of the floorplan contained here, measurements of doors, windows, rooms and any other items are approximate and no responsibility is taken for any error, omission or mis-statement. This plan is for illustrative purposes only and should be used as such by any prospective purchaser. The services, systems and appliances shown have not been tested and no guarantee as to their operability or efficiency can be given.
 Made with Metropix ©2024

