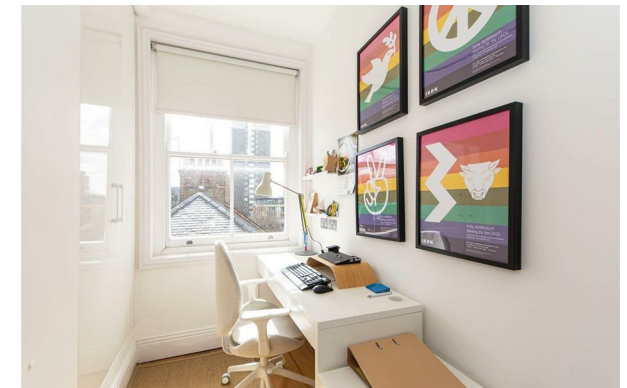


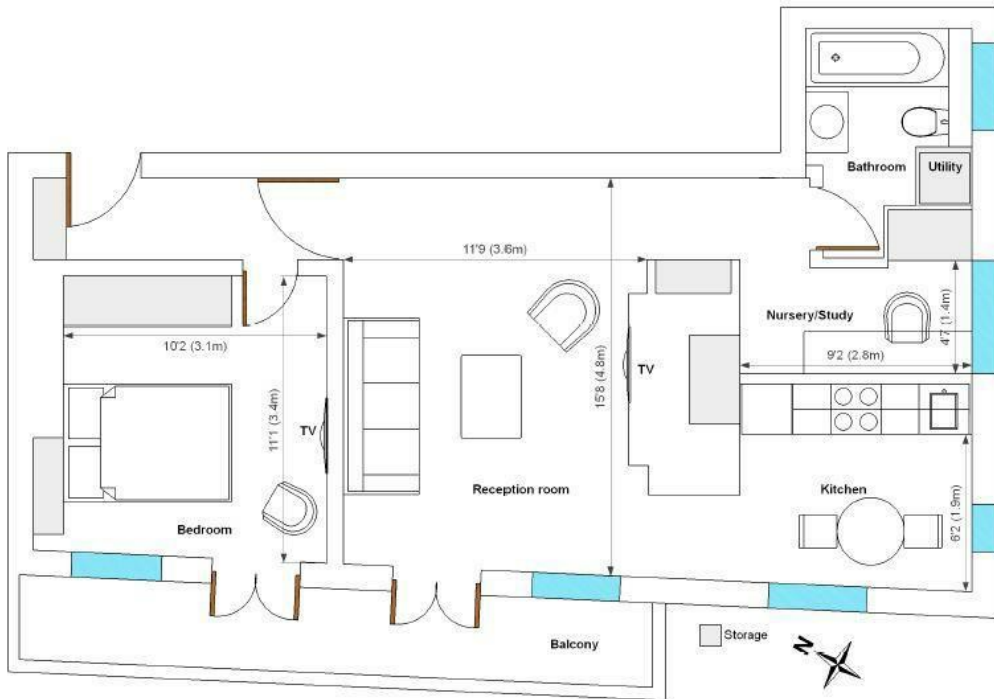
URBAN lettings



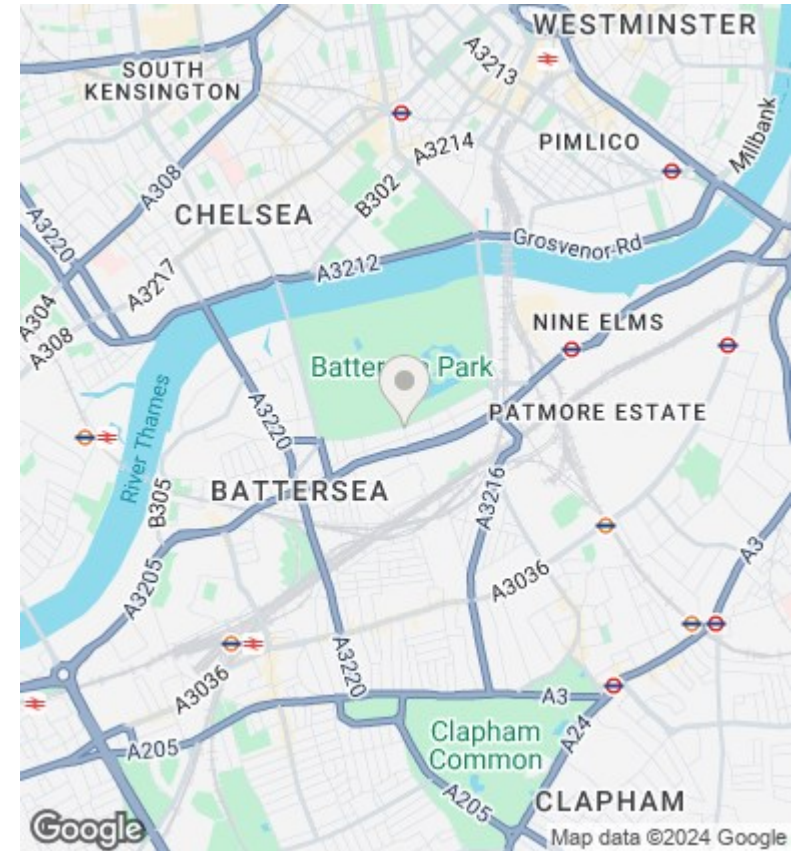
79 Primrose Mansions, Prince Of Wales Drive, London, SW11

£2,350 PCM

- Light and Spacious West Facing Flat
- Approx. 600 sq. ft.
- Secure Bicycle Storage
- Unfurnished
- Third Floor of Victorian Mansion
- Abundance of Natural Light
- Free Communal Hot Water
- Private Balcony with View of Battersea Park
- Study / Home Office
- Underfloor Heating Throughout



FLAT 79, PRIMROSE MANSIONS SW11 4EG
598 SQ.FT / 55.5 SQ.M



Directions

Viewings

Viewings by arrangement only. Call 020 7585 2761 to make an appointment.

Council Tax Band

D

EPC Rating:

E

Energy Efficiency Rating		
	Current	Potential
<i>Very energy efficient - lower running costs</i>		
(92 plus) A		
(81-91) B		82
(69-80) C		
(55-68) D		
(39-54) E	44	
(21-38) F		
(1-20) G		
<i>Not energy efficient - higher running costs</i>		
England & Wales	EU Directive 2002/91/EC	