



Holly Lodge Mansions, Highgate, N6
£299,999 **Leasehold**



A well presented and sunny top floor studio apartment within an elegant Tudor style 1920s purpose built block on the sought after Holly Lodge Estate. Featuring a good size studio space with separate kitchen and bathroom and enjoying fabulous views over the London skyline. There is use of a beautifully landscaped communal garden with the delights of Hampstead Heath and Parliament Hill only a quarter of a mile away. All the amenities of historic Highgate Village are approximately a half mile away. Offered for Sale Chain Free. EPC - D

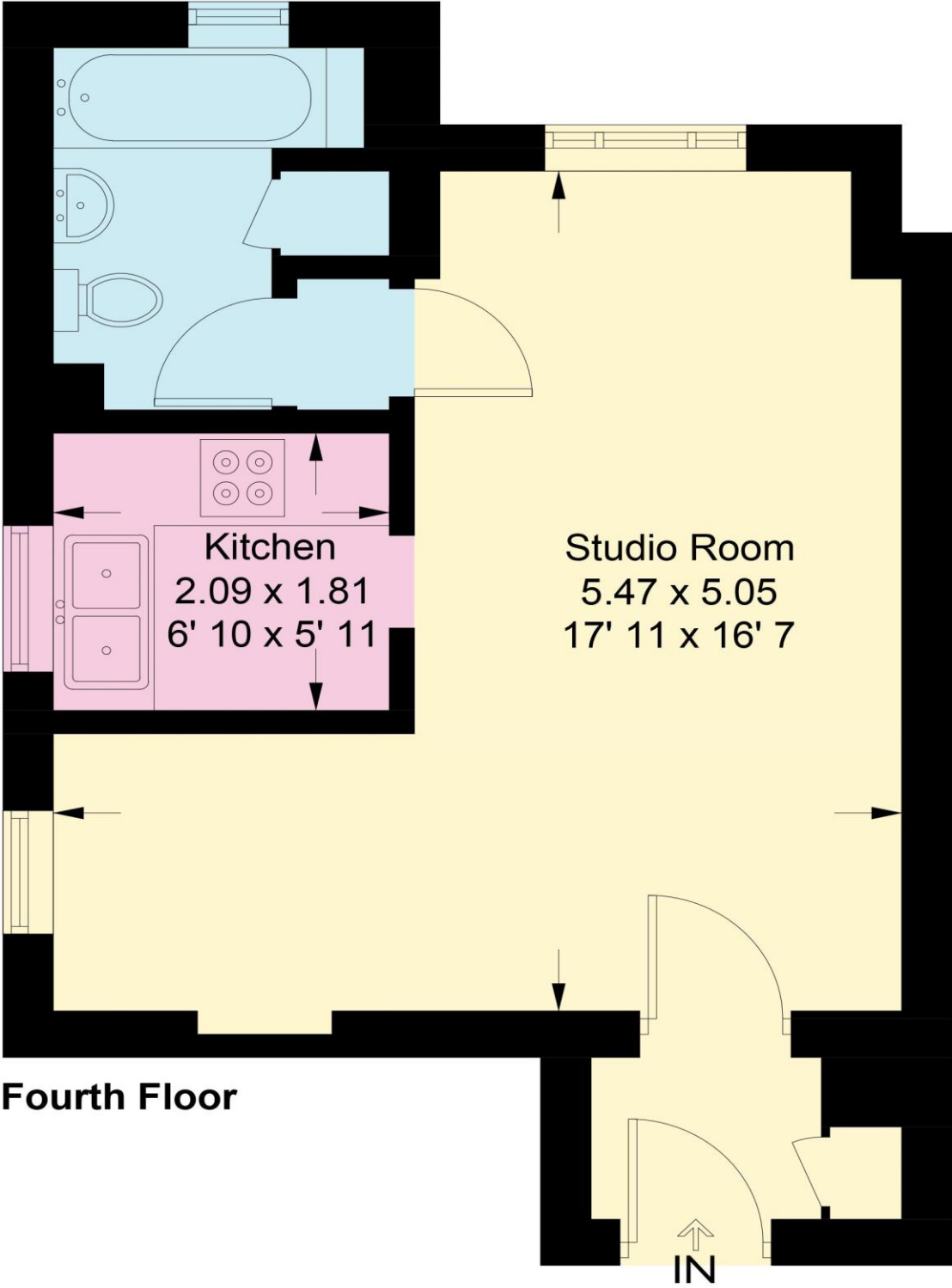


**Purpose Built apartment block
Top floor studio (walk-up)
Studio room
Separate kitchen
Bathroom
Stunning City views
Communal gardens
Close to Heath, Kenwood
& Highgate Village
EPC - D**



Holly Lodge Mansions

Approximate Gross Internal Area = 350 sq ft / 32.5 sq m



Not to scale, for guidance only and must not be relied upon as a statement of fact
All measurements and areas are approximate only and have been prepared in accordance with the current edition of the RICS Code of Measuring Practice