

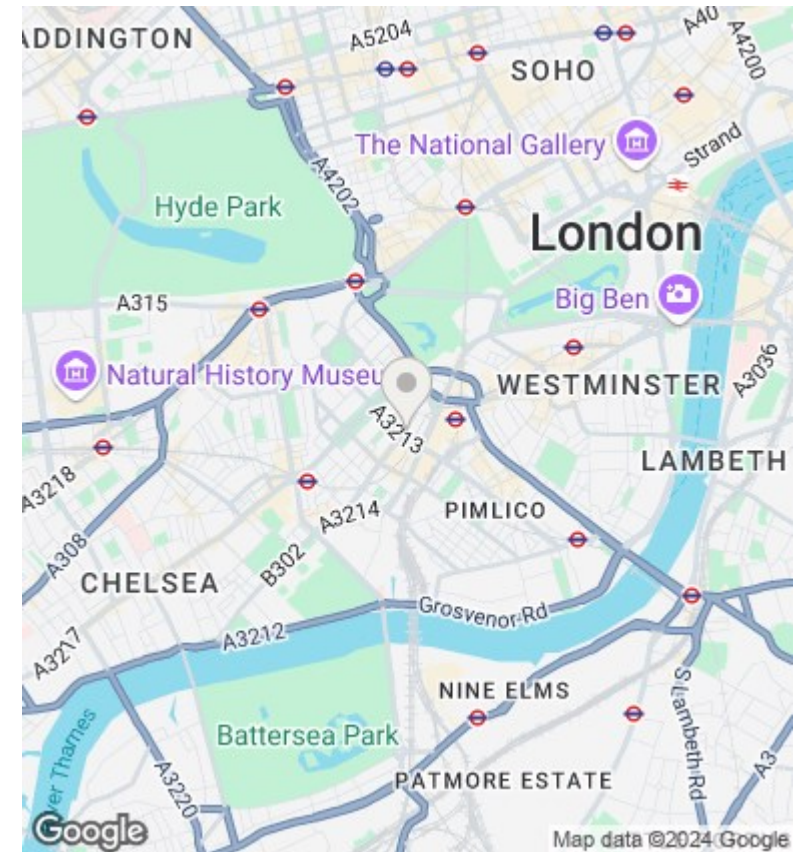
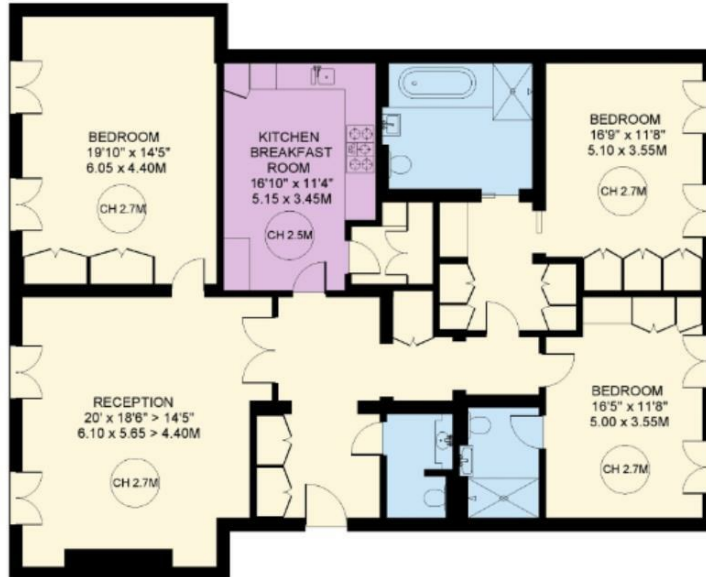


1 Ebury Square, London SW1W 9AH

£4,500 Per Week

- Short Term rental
- Approx. 1808 sq foot
- Located in the heart of Belgravia
- Bills are included
- 24 hour concierge
- 3 double bedrooms
- Camerich furniture
- Residents Gym & Spa
- Located on Ground floor
- Fully furnished

EBURY SQUARE
BELGRAVIA SW1
APPROXIMATE INTERNAL FLOOR AREA
1808 SQ.FT / 168.0 SQ.M.



Viewings

Viewings by arrangement only.
Call 02077225022 to make an appointment.

Council Tax Band

EPC Rating:

B

Energy Efficiency Rating		Current	Potential
<i>Very energy efficient - lower running costs</i>			
(92 plus) A			
(81-91) B		85	85
(69-80) C			
(55-68) D			
(39-54) E			
(21-38) F			
(1-20) G			
<i>Not energy efficient - higher running costs</i>			
England & Wales		EU Directive 2002/91/EC	