



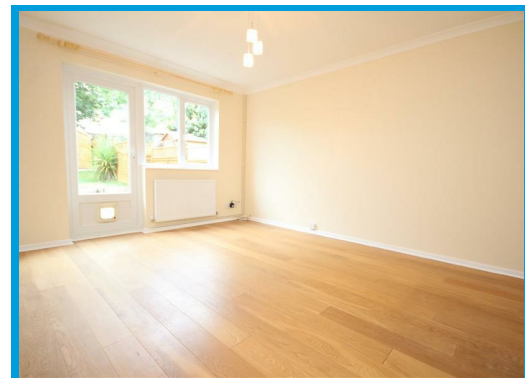
Ashbury Crescent, Guildford, Surrey GU4 7HG

£1,300 PCM

NO FEESNO DEPOSIT***

This stunning two double bedroom house has recently undergone refurbishment throughout.

Located within a quiet cul de sac, the property is well positioned within easy access to Guildford town centre and the A3 and features include two off street parking spaces.



Description

NO FEESNO DEPOSIT***

This stunning two double bedroom mid terrace house is located in a popular residential area in the catchment area of top local schools and has recently undergone refurbishment throughout.

The property comprises hallway with access to the modern kitchen with appliances, large reception room with doors leading to the rear enclosed garden.

The first floor offers master bedroom with ample built in wardrobes, a further double bedroom and family bathroom suite with shower over bath. The property further benefits from two off street parking spaces.

