



Jesmond Dene Waxham Road, Sea Palling

Price: £425,000

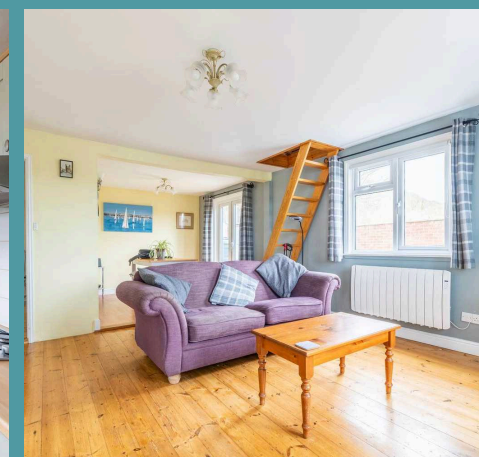
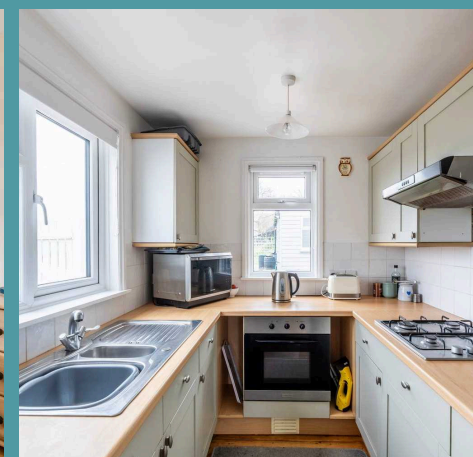
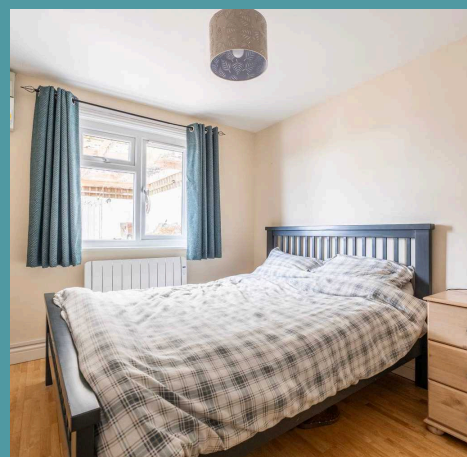
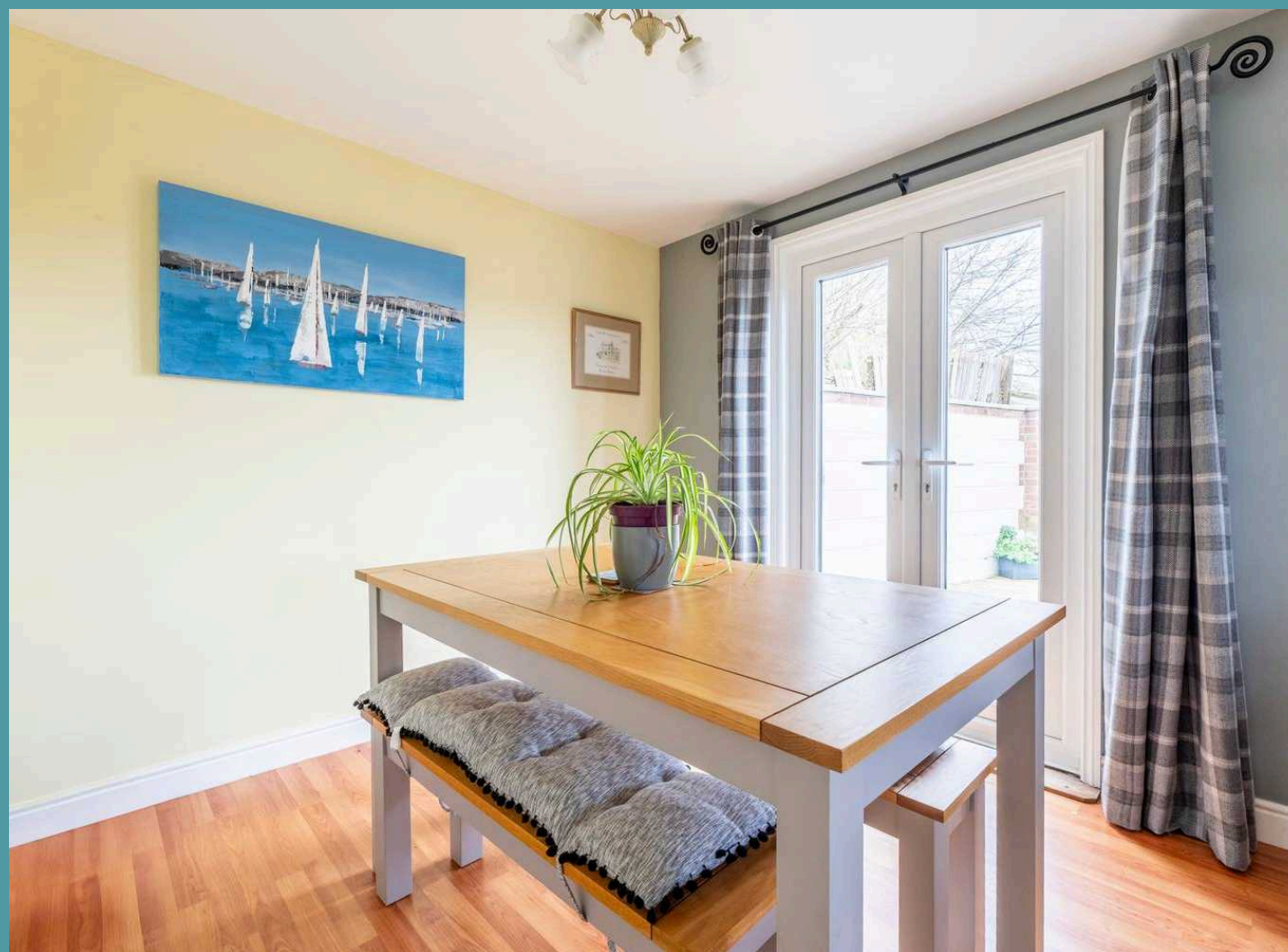
Jesmond Dene Waxham Road

Sea Palling, Norwich

Positioned on Waxham Road in the picturesque village of Sea Palling, is a delightful timber-built bungalow offering a coastal lifestyle. Set on a spacious half-acre south-facing plot, the property provides direct access to sandy beaches and stunning natural views, perfect for beach lovers. The well-maintained home features a bright living room, a generous dining area, a practical kitchen, and a detached guest building with versatile potential. Its proximity to local amenities, schools, and the bustling town of Stalham makes it an ideal blend of seaside tranquility and convenience.

The Location

Jesmond Dene, located on Waxham Road in the coastal village of Sea Palling, is a charming residential area offering proximity to key amenities and attractions. The village features a local convenience store, Sea Palling Village Store, just a short walk away, perfect for everyday essentials. For dining options, there's popular spots for relaxed meal. Families will find Stalham Academy, a well-regarded primary school, approximately 5 miles away, with additional educational options in nearby towns like North Walsham, around 12 miles distant. The bustling town of Stalham, just a 10-minute drive (5 miles), offers a Tesco Superstore and a variety of shops and cafes for broader shopping needs. The beautiful Sea Palling beach is only a short stroll from Jesmond Dene, making it an ideal location for seaside living.





Jesmond Dene Waxham Road

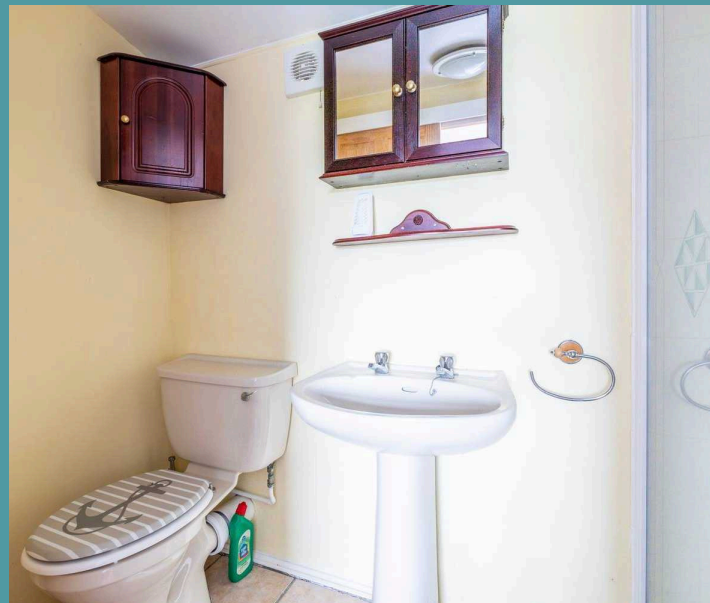
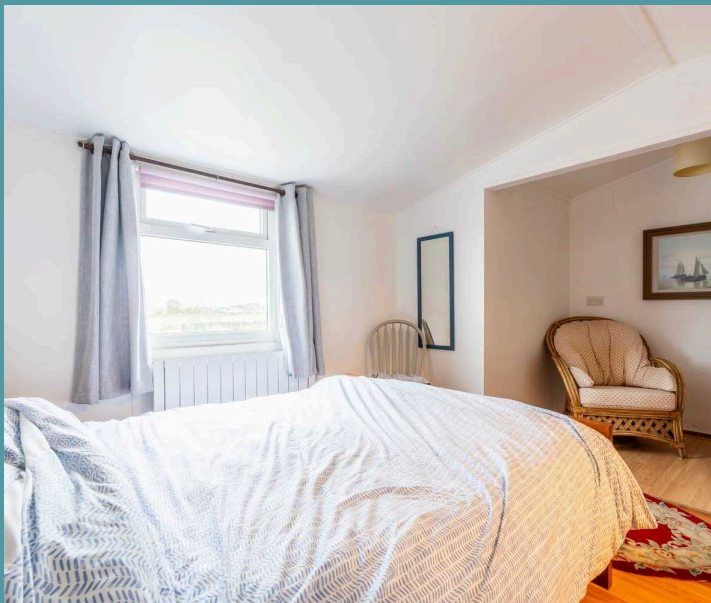
Sea Palling, Norwich

Waxham Road

Set on a generous half-acre south-facing plot, this well-maintained timber-built bungalow offers direct access to unspoilt sandy beaches, making it a dream home for beach lovers.

The property's position provides expansive views of the horizon, where you can enjoy great sunsets and an abundance of wildlife, including visiting birds and other coastal animals. The area offers peace and quiet, ideal for those seeking a relaxed lifestyle, while the garden plot provides plenty of space for entertaining, gardening, or simply soaking in the coastal ambiance.

The bungalow itself comprises a bright and airy living room, a spacious dining room perfect for hosting, and a practical kitchen fitted with ample storage. The main bedroom is generously proportioned, while the well-appointed bathroom offers modern comfort.





Jesmond Dene Waxham Road

Sea Palling, Norwich

The property also benefits from a first-floor boarded attic, ideal for storage or as a blank canvas for future projects.

Outside, a detached building enhances the property's versatility, featuring a bedroom with a bed/sitting area, kitchenette and shower room—ideal for guests, extended family, or conversion into a full annex for additional accommodation or rental income.

This property is perfectly situated for those who appreciate the balance of coastal living and rural charm. The beach is just a short stroll away, while the surrounding area offers a quiet escape from the bustle of everyday life.

Agents Note

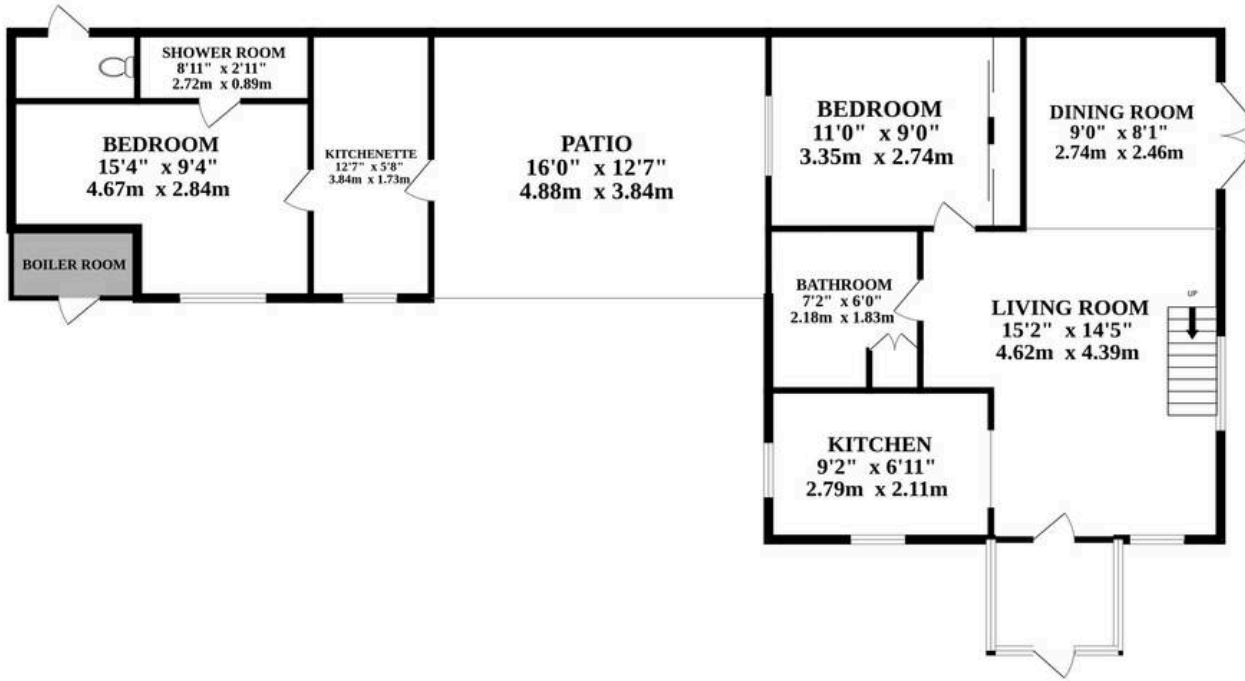
Sold Freehold.

Solar and Battery Storage

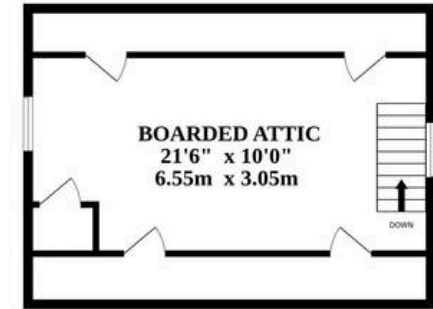
Timber Frame/Sea Defence in Place



GROUND FLOOR



1ST FLOOR



Whilst every attempt has been made to ensure the accuracy of the floorplan contained here, measurements of doors, windows, rooms and any other items are approximate and no responsibility is taken for any error, omission or mis-statement. This plan is for illustrative purposes only and should be used as such by any prospective purchaser. The services, systems and appliances shown have not been tested and no guarantee as to their operability or efficiency can be given.
Made with Metropix ©2024

