



Cranbrook Road, London, W4 2LH

A very nicely presented three-bedroomed family home situated in this very popular residential road in the heart of central Chiswick just a short walk from Chiswick's Main High Road with its array of boutique shops and restaurants, local retailers include M&S, Waitrose, Sainsbury, and Tesco. The accommodation provides: open plan living area with a feature bay to front, recently fitted kitchen/dining room with cloakroom, dining area, and doors leading onto a private rear garden with a Westerly aspect, three double bedrooms, family bathroom, gas fired central heating. Local transport links include both Turnham Green & Stamford brook tube stations numerous local bus routes with convenient vehicular access Via A4/M4 central London, Heathrow, and The West. Council Tax Band: F. EPC Band: D. The property is offered unfurnished and is available 12th November.

- Period terraced family home
- Located in the heart of central Chiswick
- Great for transport links
- Open plan living area
- Recently fitted kitchen/diner
- Three double bedrooms
- Family bathroom
- Private rear west facing garden
- Available 12th November
- Unfurnished

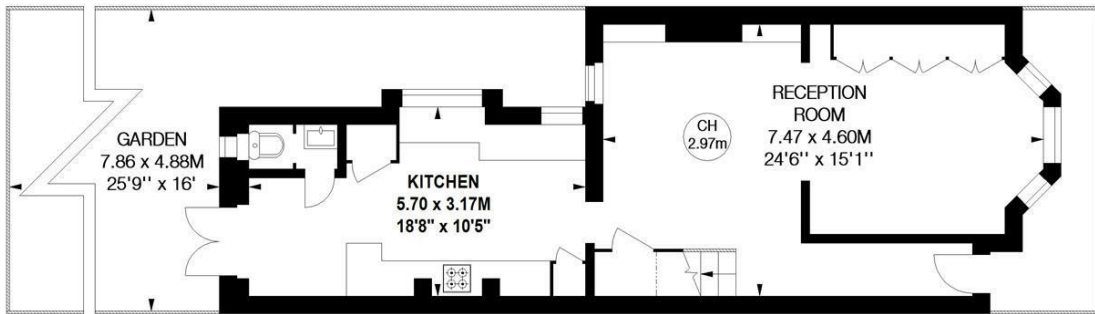
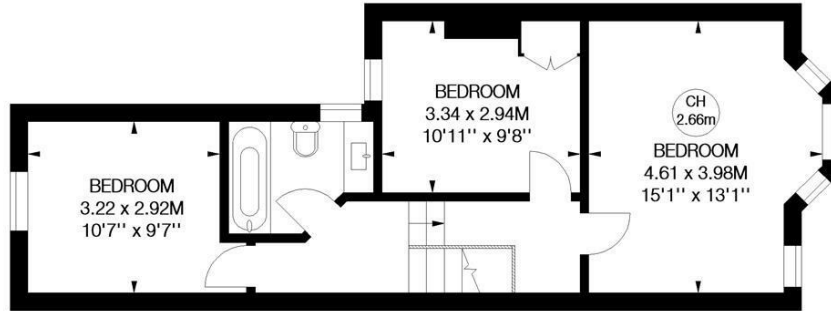
£3,750 Per Calendar Month

Cranbrook Road, W4

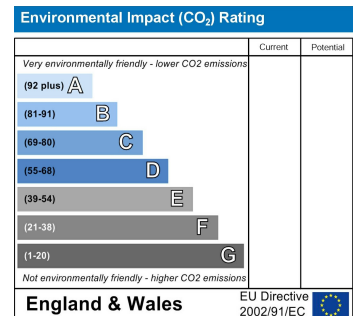
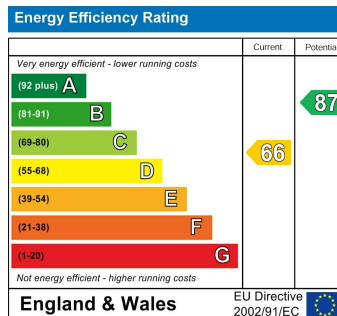
Approximate gross internal area
99.77 sq m / 1074 sq ft



Key :
CH - Ceiling Height



Not to scale, for guidance only and must not be relied upon as a statement of fact.
All measurements and areas are approximate only



5-7 Turnham Green Terrace, Chiswick, London, W4 1RG
Tel 020 8747 8800

E-mail lettings@whitmanandco.com
Website www.whitmanandco.com