



Flat 2, Maude Gray Court St. Benedicts Street, Norwich

£130,000 - £140,000 Leasehold

* Guide Price: £130,000 - £140,000 * This contemporary one-bedroom apartment is situated in a sought-after area and presents a prime opportunity for investors or first-time buyers, seeking an ideal living space. The apartment is currently vacant and offers a delightful blend of modern convenience and comfort.

Location

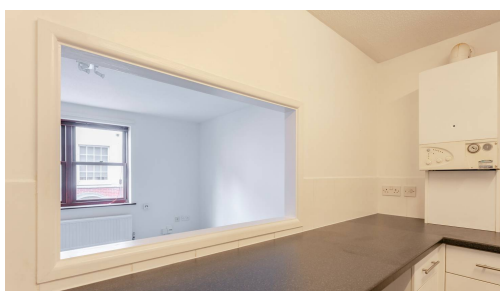
Maude Gray Court is located in a vibrant part of Norwich, known for its mix of independent shops, cafes, and restaurants. The property is within walking distance of Norwich city centre, offering easy access to amenities including shopping, entertainment, and cultural landmarks like Norwich Cathedral and Norwich Castle. The area is well-served by public transport, with bus routes nearby and Norwich railway station within easy reach, providing direct connections to London and other cities. This location is ideal for those seeking a lively yet convenient living experience in one of Norfolk's most historic districts.



Agents Note

We understand that the property is being sold as a freehold. Connected to all mains such as water, electricity, drainage and gas.

Tax Council Band - A



St Benedicts Street, Norwich

Upon entering through the porch, you are greeted by a well-appointed apartment. The apartment features a modern kitchen equipped with built-in cupboards and integrated appliances. The kitchen also boasts undercounter space for a washing machine, catering to practical daily living needs. The spacious reception room provides an inviting setting for relaxation and entertainment, with carpet floors making it a cosy space.

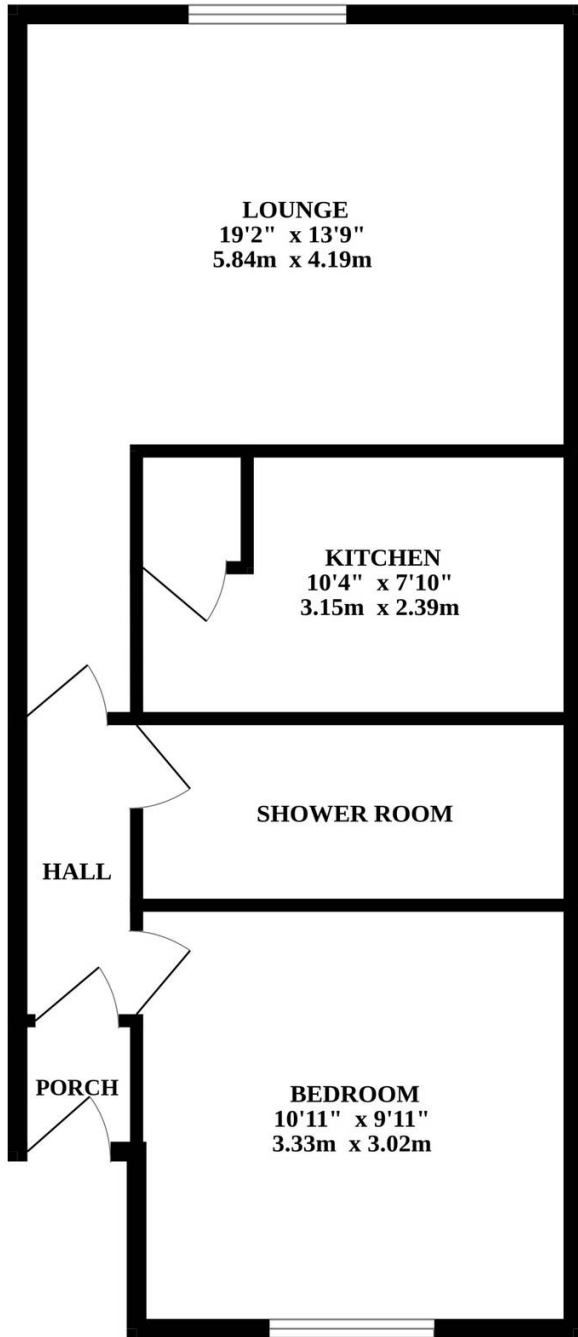
The bedroom offers ample living space, complete with built-in wardrobes for storage efficiency. The centrally located bathroom includes a step-in shower and a built-in cupboard, enhancing the functionality of the space. With parking options available including a parking lot and off-road parking, residents and guests can enjoy the convenience of secure vehicle storage.

This property is conveniently located close to amenities as it is walking distance from the city centre, offering easy access to daily necessities and leisure facilities. The vibrant local area provides a range of shops, restaurants, entertainment options and transport links for residents to explore and enjoy at their leisure.

Overall, this one-bedroom apartment boasts desirable features that cater to the needs of discerning occupants. Contact us today to arrange a viewing and take the first step towards making this property your own.



GROUND FLOOR



Whilst every attempt has been made to ensure the accuracy of the floorplan contained here, measurements of doors, windows, rooms and any other items are approximate and no responsibility is taken for any error, omission or mis-statement. This plan is for illustrative purposes only and should be used as such by any prospective purchaser. The services, systems and appliances shown have not been tested and no guarantee as to their operability or efficiency can be given.
Made with Metropix ©2024