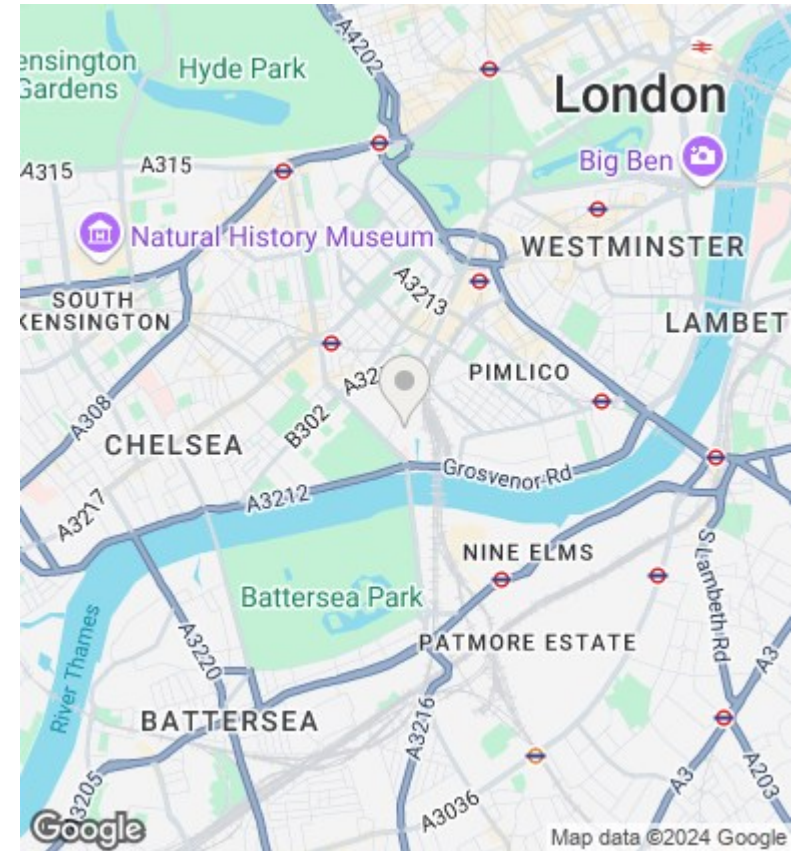
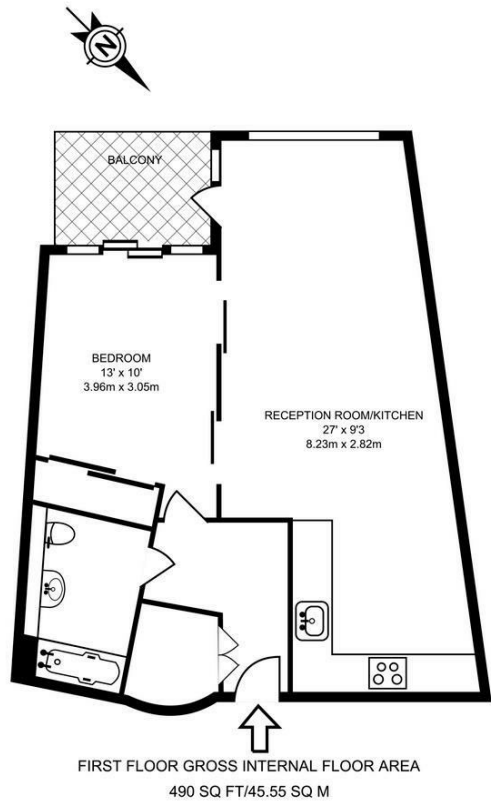




## Hepworth Court , Gatliff Road, Grosvenor Waterside SW1W 8QN

£2,903 Per Month

- Approx. 490 sq foot
- Air Cooling
- Walking distance to Sloane Square & Victoria
- Open Plan reception room
- 24 Hour concierge
- Available Now!
- One double bedroom
- Residents Gym & Spa
- Private Balcony
- Fully Fitted Kitchen



### Viewings

Viewings by arrangement only.  
Call 02077225022 to make an appointment.

### Council Tax Band

E

### EPC Rating:

D

Energy Efficiency Rating		Current	Potential
<i>Very energy efficient - lower running costs</i>			
(92 plus) <b>A</b>			
(81-91) <b>B</b>			
(69-80) <b>C</b>			<b>73</b>
(55-68) <b>D</b>		<b>64</b>	
(39-54) <b>E</b>			
(21-38) <b>F</b>			
(1-20) <b>G</b>			
<i>Not energy efficient - higher running costs</i>			
<b>England &amp; Wales</b>		EU Directive 2002/91/EC	