



Acton Lane, London, W4 5DD

Guide Price £550,000

**WHITMAN & CO.**

SALES · LETTINGS · COMMERCIAL



- Immaculate larger than average apartment
- Open plan kitchen/reception room
- Extensive built-in storage
- Two beds/two baths
- Secure gated parking space
- No onward chain

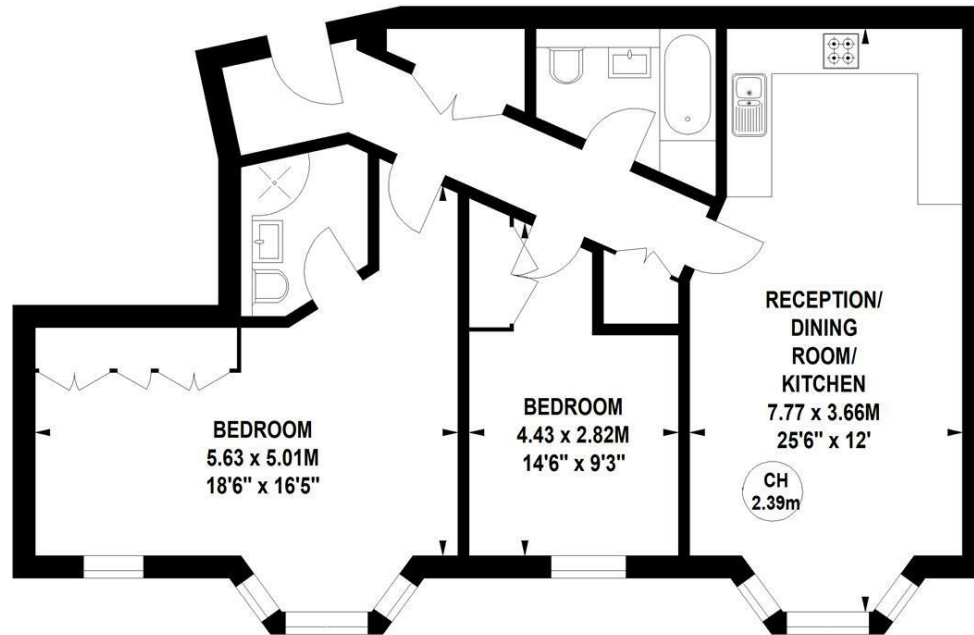
Tenure - Leasehold  
 Lease length - 108 years remaining  
 Ground rent - £200 pa  
 Service charge - £1960 pa  
 Local authority - Ealing  
 Council tax - Band E

## Carelia Court, Acton Lane, W4

Approximate gross internal area  
**78.69 sq m / 847 sq ft**



Key :  
 CH - Ceiling Height



### First Floor

Not to scale, for guidance only and must not be relied upon as a statement of fact.  
 All measurements and areas are approximate only

## THE PROPERTY

An immaculately presented, larger than average two-bedroom purpose-built apartment set within this popular secure gated development. The accommodation of 847 sqft comprises a large open-plan living area with a fitted kitchen and integrated appliances, spacious master bedroom with fitted wardrobes and en-suite shower room, second double bedroom with fitted wardrobes, main bathroom, two large hallway cupboards that house the washer/dryer and electric heating / hot water system with additional room for storage. private secure parking space included. Local convenience shopping is close to hand whilst further afield are the more extensive shopping and restaurant facilities of Chiswick's desirable main high road. Transport links include both Chiswick Park and Turnham Green tube stations, numerous local bus routes with convenient vehicular access via A4/M4 Central London, Heathrow and The West. No onward chain.

## SITUATION



5-7 Turnham Green Terrace, Chiswick, London, W4 1RG

Tel 020 8747 8800

E-mail [sales@whitmanandco.com](mailto:sales@whitmanandco.com)

Website [www.whitmanandco.com](http://www.whitmanandco.com)

