



Acton Lane, London, W4 5DL

£385,000

WHITMAN & CO.

SALES · LETTINGS · COMMERCIAL

- Newly renovated
- Quiet master bedroom
- Newly fitted kitchen and bathroom
- 20'2 Reception room with open outlook
- No chain
- Period conversion flat

Tenure - Leasehold with a share of freehold
 Ground Rent - Peppercorn
 Maintenance costs - 20% of outgoings
 Local Authority - Ealing
 Council Tax - Band D

THE PROPERTY

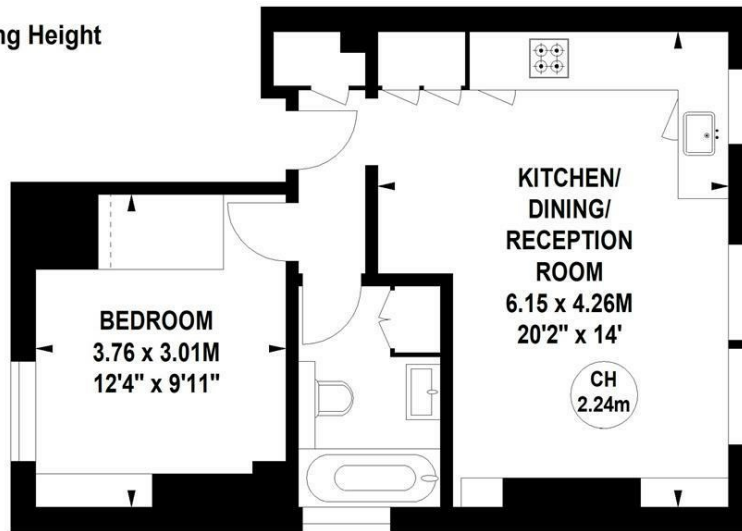
A well-appointed, newly renovated, bright, and spacious one-bedroom period conversion flat with the added benefit of a share in the freehold and close proximity to all amenities. The apartment has been beautifully designed by the existing owners and benefits from being a turnkey property, ideal first time buy or pied-a-terre. The flat comprises a 20'2 reception room with an open outlook, fully integrated kitchen, quiet double bedroom, luxury bathroom, gas-fired central heating, ample storage, share in the freehold, excellent condition throughout. Situated within close proximity to numerous transport facilities and local shops. No chain.

Acton Lane, W4

Approximate gross internal area

41.34 sq m / 445 sq ft

Key :
 CH - Ceiling Height



First Floor

Not to scale, for guidance only and must not be relied upon as a statement of fact.
 All measurements and areas are approximate only

SITUATION



5-7 Turnham Green Terrace, Chiswick, London, W4 1RG

Tel 020 8747 8800

E-mail sales@whitmanandco.com

Website www.whitmanandco.com