



Mulberry Tree Mews, London, W4 5DE

£600,000

WHITMAN & CO.

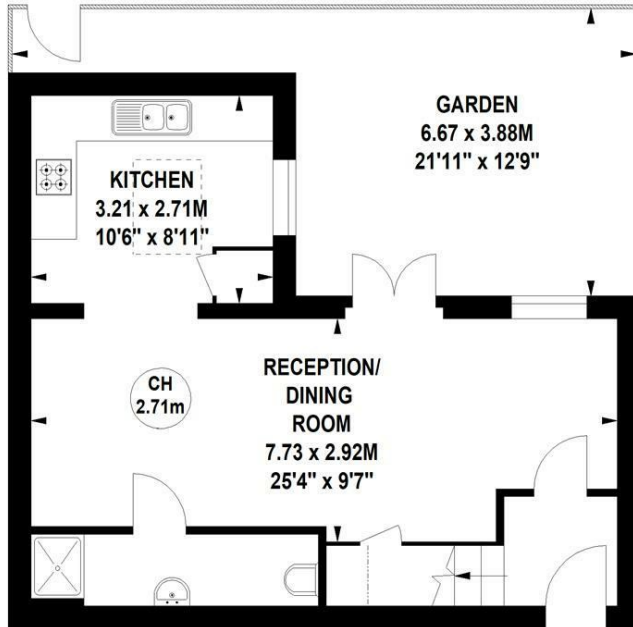
SALES · LETTINGS · COMMERCIAL

- Semi-detached house
- Sought after location
- Freehold
- Two bedrooms
- Fantastic transport links
- No chain

Tenure - Freehold
Local Authority - Ealing
Council Tax - Band E

THE PROPERTY

A unique, well presented two bedroom freehold house offering bright rooms and a private patio in this sought after residential road close to numerous amenities. This delightful house comprises a large reception room with ceiling heights of 2.71m and French doors onto a private patio, fully fitted kitchen, ground floor shower room, two double bedrooms with fitted wardrobes, family bathroom and a private tiled patio. Mulberry Tree Mews is located just off Clovelly Road, close to the wide array of shops and amenities on Acton Lane and Chiswick High Road. Transport links include local bus routes, Chiswick Park tube station and South Acton overground station. No onward chain.



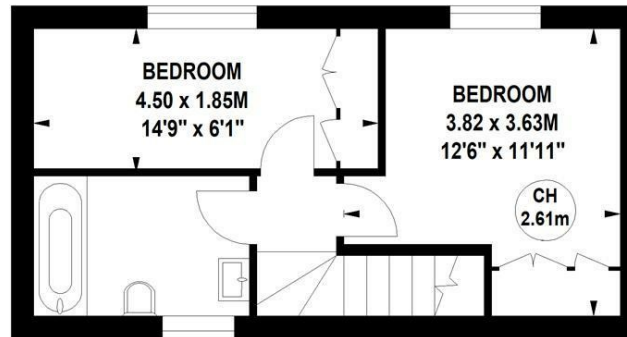
Ground Floor

Mulberry Tree Mews, W4

Approximate gross internal area

68.56 sq m / 738 sq ft

Key :
CH - Ceiling Height



First Floor

Not to scale, for guidance only and must not be relied upon as a statement of fact.
All measurements and areas are approximate only

SITUATION



5-7 Turnham Green Terrace, Chiswick, London, W4 1RG

Tel 020 8747 8800

E-mail sales@whitmanandco.com

Website www.whitmanandco.com