



Palmer & Partners



Palmer & Partners

**Springfield Road, Lower Somersham, IP8 4PG**

**Asking Price: £290,000**

# Springfield Road, Lower Somersham, Ipswich, Suffolk, IP8 4PG

This beautifully presented two bedroom detached bungalow, situated in the sought after village of Lower Somersham, benefits from a good size rear garden, garage, off-road parking, and double glazing. As agents, we recommend the earliest possible internal viewing to appreciate the quality of accommodation on offer which comprises front porch; entrance hall; lounge; kitchen; conservatory; bathroom; and two double bedrooms, one of which has an en-suite shower room.

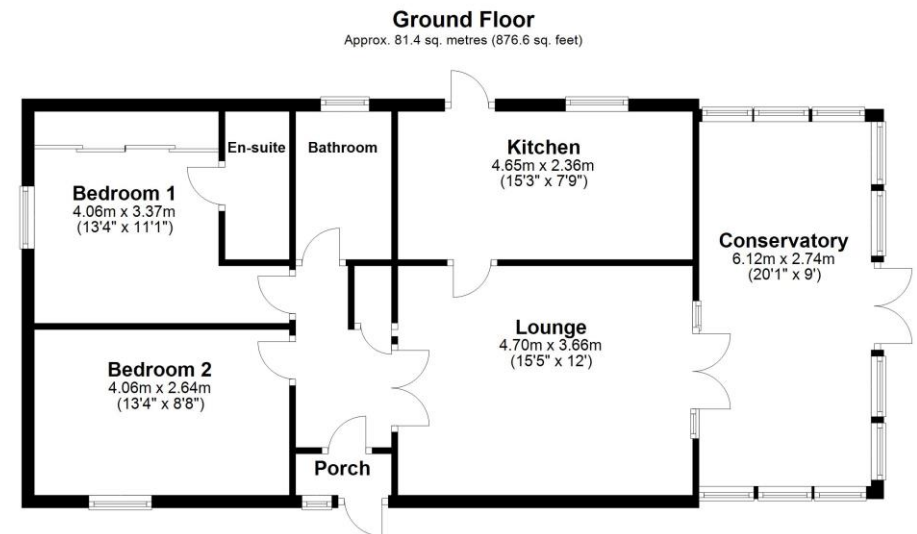
The attractive village of Lower Somersham lies approximately 5½ miles west of the county town of Ipswich which provides a mainline railway station with direct links to London Liverpool Street Station. Lower Somersham offers a variety of local amenities including village hall, community shop, two churches, public house, and primary school; and has a large playing field with children's play area, car park and pavilion.

Council tax band: C

EPC Rating: D

## Accommodation & Amenities

- Detached Bungalow
- Two Double Bedrooms
- Lounge & Conservatory
- Bathroom & En-Suite Shower Room
- Good Size Rear Garden
- Garage & Off-Road Parking



Total area: approx. 81.4 sq. metres (876.6 sq. feet)



