

Meredith Mews, Brockley Road, London, SE4 2SL

Offers between £525,000 - £550,000.

Bryan & Keegan
ESTATE AGENTS

- Chain Free
- Two Bedrooms
- Close To Public Transport
- Shops And Amenities Nearby
- Garage
- Private South Facing Garden and Communal area





This rarely available mews house is a must see. The freehold property, with private garden and garage, is set within a quiet, gated community and is located within minutes of everything great that Brockley has to offer.

The property is a desirable end-of-terrace house within the development. It offers bright rooms, a large reception room with space to dine, a kitchen/breakfast room, two double bedrooms, a recently installed Worcester Bosch gas boiler, neutral décor, and south-facing rear garden with side access. The front of the property faces on to a well-kept communal lawn. It has the added advantage of its own garage and comes with no onward chain.

Meredith Mews is set back from Brockley Road in the heart of this vibrant neighbourhood, less than half a mile to Brockley Overground and Crofton Park Station with frequent trains into London Bridge, Shoreditch & Dalston, Blackfriars, Denmark Hill and Elephant & Castle.

The local high street offers an excellent selection of bars, coffee shops, restaurants and supermarkets. Notable points of interest include the green open spaces at Hilly Fields park and the popular Brockley Food Market.

Viewings highly recommended!

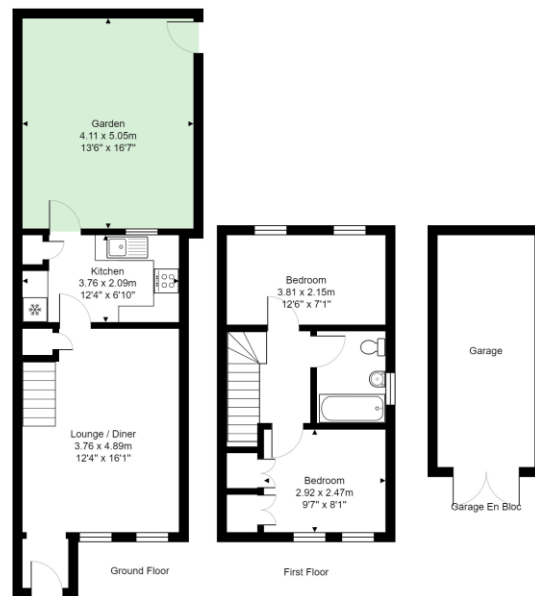


Brockley, 360 Brockley Road, Brockley,
London, SE4 2BY

Tel: 020 8691 1155

info@bryanandkeegan.co.uk

www.bryanandkeegan.co.uk



Total Area: 68.5 m² ... 738 ft² Including Garage (excluding garden)
All measurements are approximate and for display purposes only.
Meredith Mews, Brockley Road, London, SE4 2SL

Energy Efficiency Rating

	Current	Potential
Very energy efficient - lower running costs		
(92+) A		
(81-91) B		89
(69-80) C	73	
(55-68) D		
(39-54) E		
(21-38) F		
(1-20) G		
Not energy efficient - higher running costs		
England, Scotland & Wales	EU Directive 2002/91/EC	

Important Notice

- These details have been prepared and issued in good faith and do not constitute representations of fact or form part of any offer or contract.
- Please note that we have not carried out a structural survey of the property, nor have we tested any of the services or appliances.
- All measurements are intended to be approximate only.
- All photographs show parts of the property as they were at the time when taken.
- Any reference to alterations or particular use of the property wherever stated, is not a statement that planning, building regulations or other relevant consent has been obtained.
- Floorplan. All measurements, walls, doors, windows, fittings and appliances, their sizes and locations are shown conventionally and are approximate only and cannot be regarded as being a representation either by the seller or his Agent.