



# Honeysuckle Place

Weston Turville | Aylesbury | Buckinghamshire | HP22  
5WL



**Williams**  
PROPERTIES

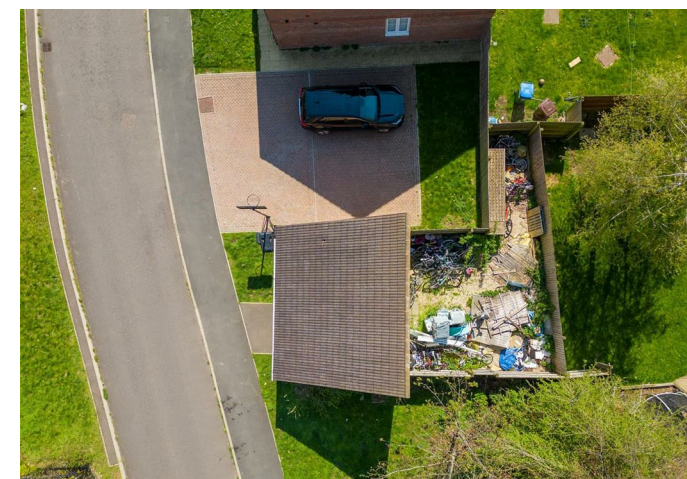
# Honeysuckle Place

Weston Turville | Aylesbury | Buckinghamshire | HP22 5WL

A rare opportunity to purchase this garage with garden space to the rear set within a cul-de-sac in the sought after village of Weston Turville. The elevations are in brick under a mono pitch tiled roof, up and over door, light and power supply. Subject to planning permission, there is potential for a range of other uses including a small house, office or workshop. Please call Williams Properties for more information.

£80,000

- Garage With Garden Space
- Weston Turville
- Investment Opportunity
- Please Call For Viewings



Garage with up and over door, light and power supply. Rear garden space with gated access to the side.



Energy Efficiency Rating		Current	Potential
Very energy efficient - lower running costs			
(92-100) <b>A</b>			
(81-91) <b>B</b>			
(69-80) <b>C</b>			
(55-68) <b>D</b>			
(39-54) <b>E</b>			
(21-38) <b>F</b>			
(1-20) <b>G</b>			
Not energy efficient - higher running costs			
<b>England &amp; Wales</b>		EU Directive 2002/91/EC	

Environmental Impact (CO <sub>2</sub> ) Rating		Current	Potential
Very environmentally friendly - lower CO <sub>2</sub> emissions			
(92-100) <b>A</b>			
(81-91) <b>B</b>			
(69-80) <b>C</b>			
(55-68) <b>D</b>			
(39-54) <b>E</b>			
(21-38) <b>F</b>			
(1-20) <b>G</b>			
Not environmentally friendly - higher CO <sub>2</sub> emissions			
<b>England &amp; Wales</b>		EU Directive 2002/91/EC	



Williams Properties  
8-10 Temple Street  
Aylesbury  
Buckinghamshire HP20 2RQ

Email: [aylesbury@williams.properties](mailto:aylesbury@williams.properties)  
Web: [www.williams.properties](http://www.williams.properties)  
Tel: 01296 435600

For clarification, we wish to inform perspective purchasers that we have prepared these sales particulars as a general guide. We have not carried out a detailed survey, nor tested the services, appliances and specific fittings. Room sizes are approximate and rounded; they are taken between internal wall surface and therefore include cupboards/shelves, etc. Accordingly, they should not be relied upon for carpets and furnishings. Formal notice is also given that all fixtures and fittings, carpets, curtains/blinds and kitchen equipment, whether fitted or not are deemed removable by the vendor unless specifically itemised within these particulars.