



Dorchester Grove, London, W4 2LD

A nicely presented four double bedroomed three bath house situated in this very popular residential area within walking distance of Chiswick High Road with its array of boutique shops, bars and restaurants.

The accommodation provides master bedroom with tiled en-suite, three further double bedrooms, all equipped with an A/C unit for climate control, fitted modern kitchen with dining island and an excellent selection of appliances and storage, family WC, ground floor shower room, impressive 26'2" x 15'9" wood floored reception/dining room with inbuilt media wall, bi-folding doors leading to a paved rear garden with side access and external shed storage. TV sets, excellent storage and tailored furniture throughout makes this a move in ready letting.

Local transport links include both Turnham Green and Stamford Brook tube stations, numerous local Bus routes with ideal vehicular access via A4/M4 to Central London, Heathrow & The West. Hounslow Council Band E. EPC-D. The property is available now and is offered furnished.

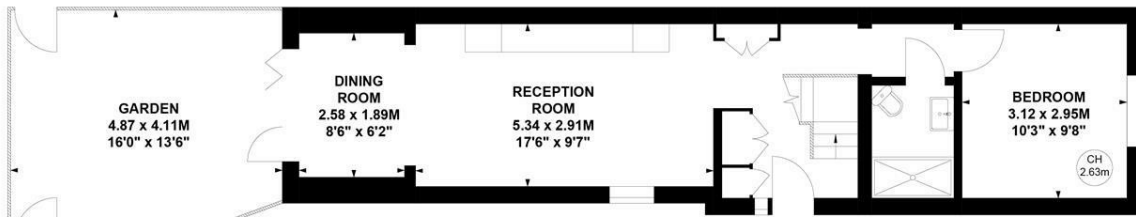
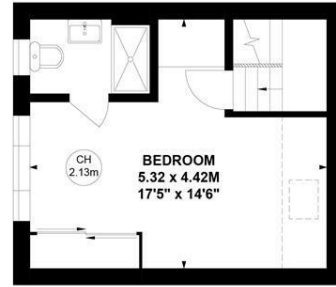
- Four double bedrooms
- Three bathroom
- Great location
- Superb transport links
- 26'2" x 15'9" wood floored reception/dining room
- Move in ready let
- A/C units throughout
- Furnished
- Available now

£4,000 Per Calendar Month

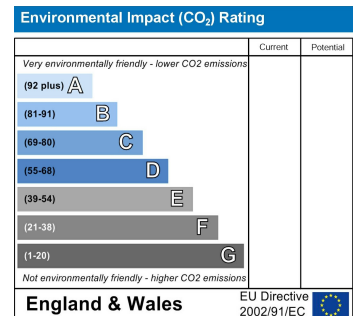
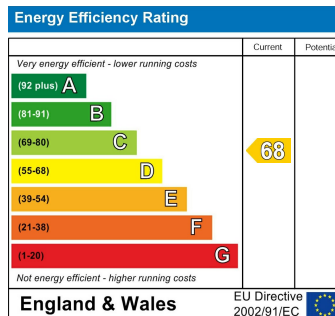
Dorchester Grove, W4

Approximate Gross Internal Area
119.09 sq m / 1282 sq ft

Key :
CH - Ceiling Height



Not to scale, for guidance only and must not be relied upon as a statement of fact.
All measurements and areas are approximate only



5-7 Turnham Green Terrace, Chiswick, London, W4 1RG
Tel 020 8747 8800

E-mail lettings@whitmanandco.com
Website www.whitmanandco.com