



255 Sundowner, Newport Road, Hemsby

£23,000 Leasehold

Welcome to this cosy 2-bedroom chalet, tucked away in a peaceful setting close to the vibrant town of Great Yarmouth. Set within a holiday park, this property promises a relaxing retreat for those seeking a tranquil getaway. Displaying a timeless charm, this property boasts a long lease with 90 years remaining, presenting an enticing opportunity for prospective buyers seeking a seaside investment with strong letting potential.

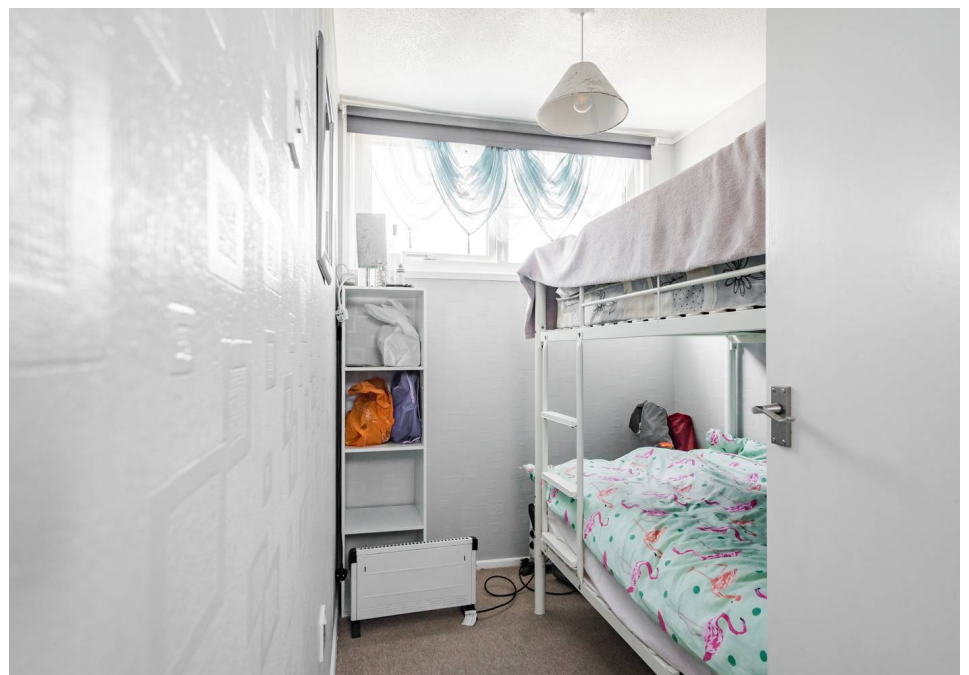
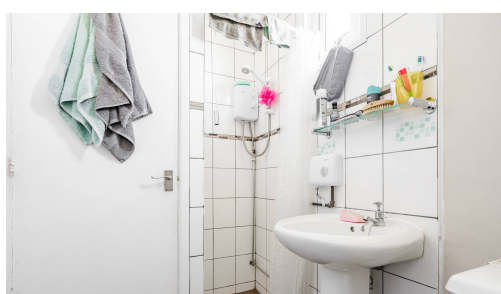
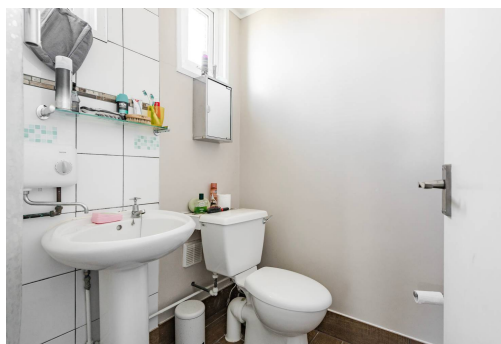
Location

Newport Road in Hemsby offers the perfect coastal escape in the heart of Norfolk. Just a short walk from the golden sands of Hemsby Beach, this property is ideally situated for enjoying seaside living with an array of local amenities, including charming cafes, traditional pubs, and family-friendly attractions. The vibrant village of Hemsby is renowned for its lively holiday atmosphere, stunning coastal walks, and easy access to the nearby Broads National Park, providing endless opportunities for outdoor adventures. With Great Yarmouth just a 15-minute drive away, residents can also enjoy a wider range of shopping, dining, and entertainment options. This location combines the tranquillity of beachside living with the convenience of being close to everything you need for an ideal getaway or a relaxing permanent residence.



Sundowner

Upon entering the chalet, you are greeted by an inviting open-plan living area, seamlessly flowing into a well-equipped kitchen. The comfortable sitting area is perfect for lounging and unwinding after a day of exploring the local sights. The chalet boasts two bedrooms, offering comfortable accommodation for guests or family members.



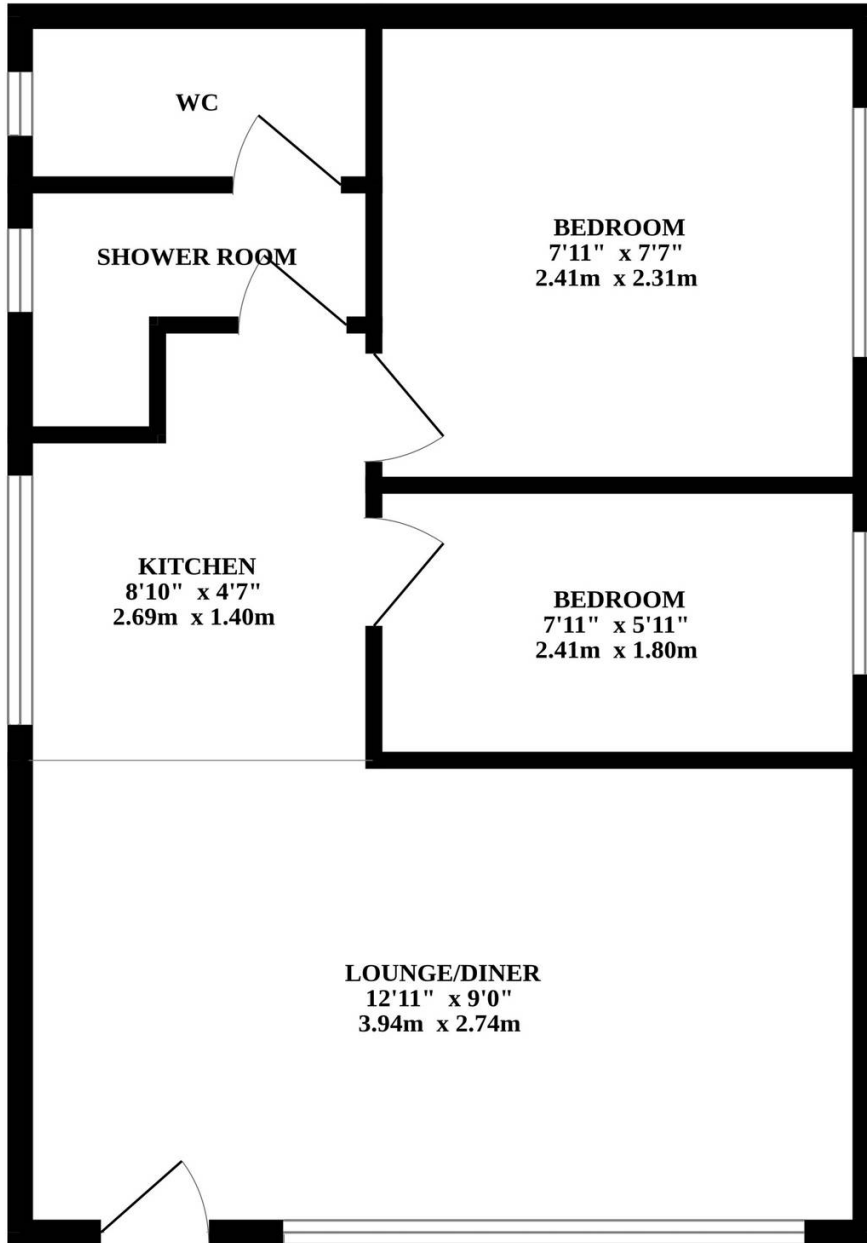
The convenience of a WC and shower room adds to the functionality of the space.

Nestled within lawned gardens, this property offers a serene ambience for enjoying the fresh coastal air. With allocated parking provided, you can easily come and go as you explore the nearby attractions and entertainment venues. Within a short walk from Hemsby Beach, you can enjoy leisurely strolls along the sandy shores or soak up the sun on lazy afternoons.

The location of this holiday chalet is truly unbeatable, offering easy access to a myriad of amenities and facilities. Whether you're in the mood for shopping, dining, or entertainment, everything you need is just a stone's throw away. For a change of scene, a quick 15-minute drive will take you to the bustling town of Great Yarmouth, renowned for its historic attractions and vibrant atmosphere.



GROUND FLOOR



Whilst every attempt has been made to ensure the accuracy of the floorplan contained here, measurements of doors, windows, rooms and any other items are approximate and no responsibility is taken for any error, omission or mis-statement. This plan is for illustrative purposes only and should be used as such by any prospective purchaser. The services, systems and appliances shown have not been tested and no guarantee as to their operability or efficiency can be given.
Made with Metropix ©2024