

# mi-move

MOVING MADE EASY



Hogarth Crescent, London SW19

£1,750 pcm

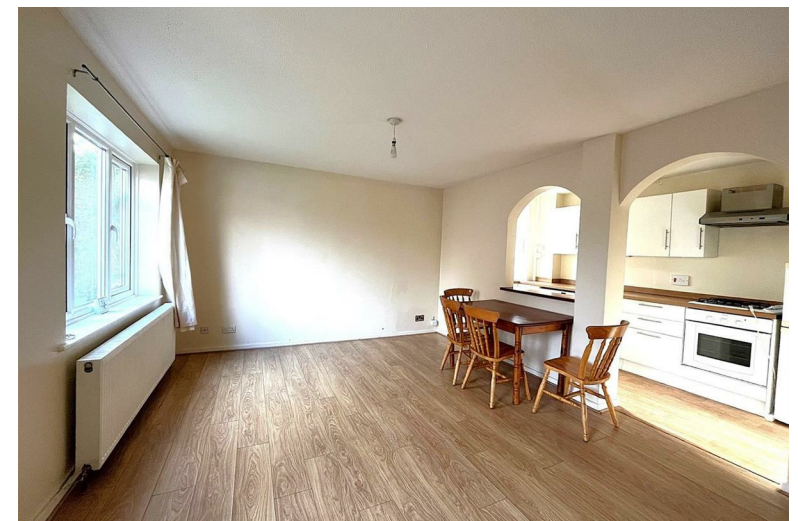
Nestled in a quiet crescent this charming two-bedroom end terrace house is a true gem waiting to be discovered. As you step through the part glazed hardwood front door, you are greeted by a spacious living room with a laminated timber floor, setting the tone for the elegance that flows throughout the property.

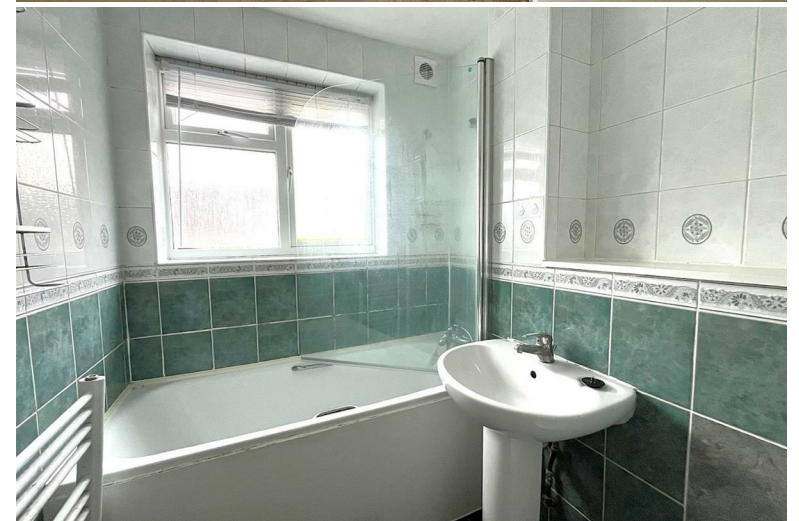
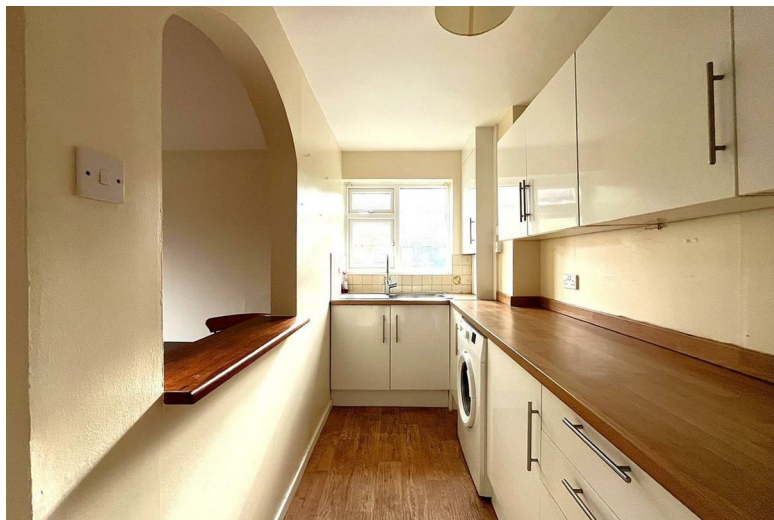
The house boasts a well-equipped kitchen with a delightful range of fitted wall and base units, an integrated oven and gas hob, and a free-standing fridge freezer. The kitchen's partly open-plan design adds a modern touch, perfect for both cooking up a storm and entertaining guests.

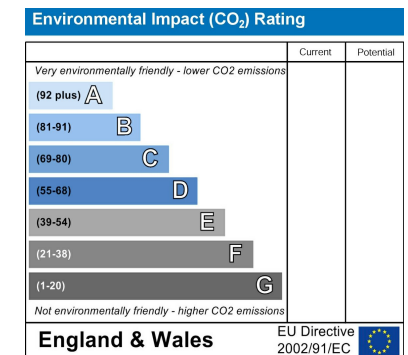
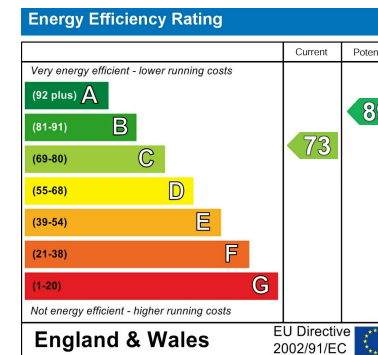
Ascending to the first floor, you'll find two cosy bedrooms - a double and a single - offering comfort and tranquillity. The modern bathroom features a full-sized bath with a shower, a heated towel rail, and sleek ceramic tiled flooring, providing a relaxing space to unwind after a long day.

Convenience is key with this property, as it is ideally located just a stone's throw away from Colliers Wood Station, making commuting a breeze. Additionally, the house comes complete with a private front garden and off-street parking, ensuring you always have a space to park your vehicle.

With full double glazing and gas central heating, this house offers not only style but also practicality. Don't miss the opportunity to make this house your home sweet home. Contact us now to arrange your viewing and experience the magic for yourself.







Mi-Move Limited, 6 Sutton Plaza, Sutton Court Road, Sutton, Surrey SM1 4FS

**Phone:** 020 3538 0558 **Email:** info@mi-move.com **Web:** www.mi-move.com

**Registered in England No:** 07979632 **VAT No:** 132 0989 20

