



14 Mill Reach, Buxton

In Excess of £550,000

14 Mill Reach

Buxton, Norwich

Positioned along the banks of the River Bure, this five-bedroom home offers an idyllic riverside home with breathtaking views. Designed to seamlessly blend with its picturesque surroundings, the property features a first-floor lounge with a balcony, a sociable dining room opening onto a rear terrace, and a beautifully appointed Shaker-style kitchen. With its own river frontage, fishing rights, and over six acres of shared meadowland, this residence provides a unique opportunity for peaceful, nature-filled living. Set in the charming village of Buxton, it's just minutes from the Norfolk Broads and under half an hour from Norwich, offering the perfect combination of rural and easy access to city life.

The Location

Buxton, a charming Norfolk village, is surrounded by rolling countryside and green fields, creating a picturesque setting. Nestled on the banks of the River Bure, it offers scenic views and peaceful riverside walks, with easy access to the Norfolk Broads—a vast network of waterways rich in wildlife.

Steeped in history, the village is home to landmarks such as the striking Buxton Mill, while its winding streets reveal quaint cottages and traditional houses. Throughout the year, local events and festivals celebrate the area's heritage. With the stunning North Norfolk coastline just a short drive away, Buxton provides the perfect blend of natural beauty, history, and access to coastal adventures.





14 Mill Reach

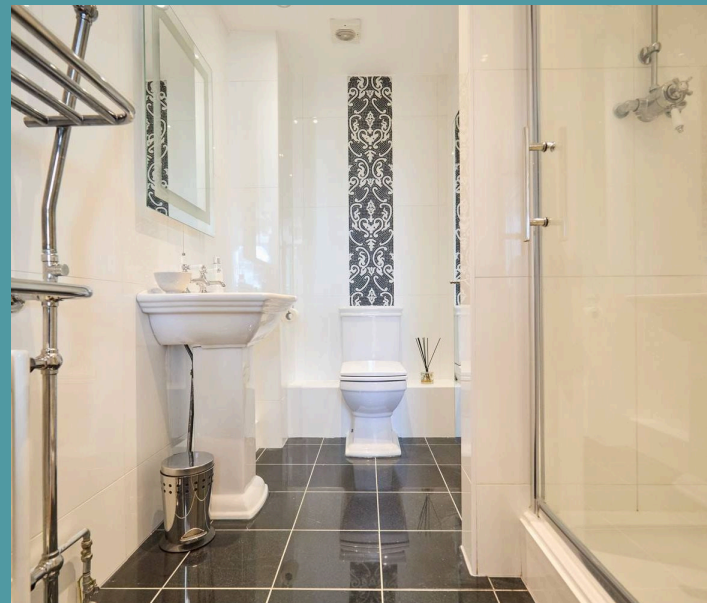
Buxton, Norwich

Mill Reach

Set in a stunning riverside location, this exceptional five-bedroom home offers an enviable escape to the countryside with breathtaking views over the River Bure. Thoughtfully designed to embrace its picturesque surroundings, the property features a generous first-floor lounge with doors opening onto a balcony, providing an elevated vantage point over the water.

A sociable dining room with sliding doors leads to a charming rear terrace, seamlessly connecting indoor and outdoor living. The stylish kitchen showcases a classic Shaker-style design, finished in a subtle blue scheme, with a Belfast sink that adds to its timeless appeal. Complemented by a utility room, three reception rooms and a master suite with an en-suite and dressing room, this home effortlessly balances comfort and character.

Approached via a brick-weave driveway, the property offers ample off-road parking and an integral garage, ensuring practicality matches its aesthetic appeal. The mature, cottage-style garden meanders towards the water's edge, creating a peaceful setting where you can watch kingfishers dart across the river or spot pike beneath the surface.





14 Mill Reach

Buxton, Norwich

With its own river frontage and fishing rights, this home provides a rare opportunity to embrace a tranquil, easy-living lifestyle in the sought-after village of Buxton. Surrounded by over six acres of shared meadowland, the setting is rich in natural beauty and local history, with the village also being the final resting place of Black Beauty author, Anna Sewell.

Perfect as a forever home or a countryside escape, this property offers an unrivaled lifestyle within easy reach of both the Norfolk Broads and the North Norfolk coastline. Less than eight miles from Wroxham and under thirty minutes from Norwich, the location combines the best of rural living with convenient access to the coast and city.

Agents Note

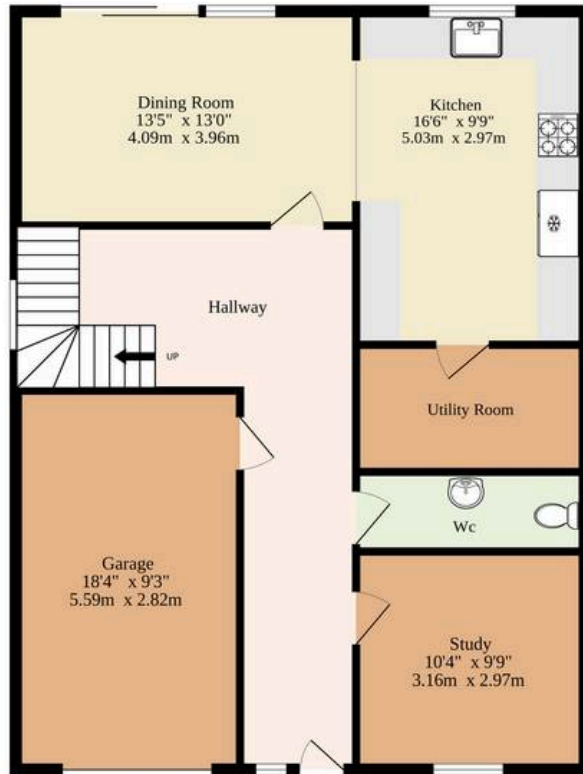
Sold Freehold

Maintenance:£30pcm

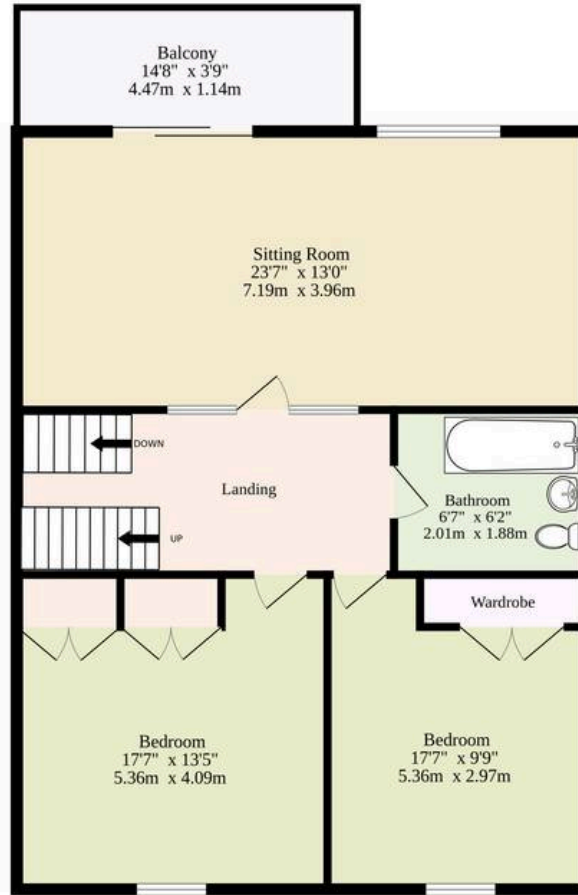
Connected to mains electricity, water and drainage.



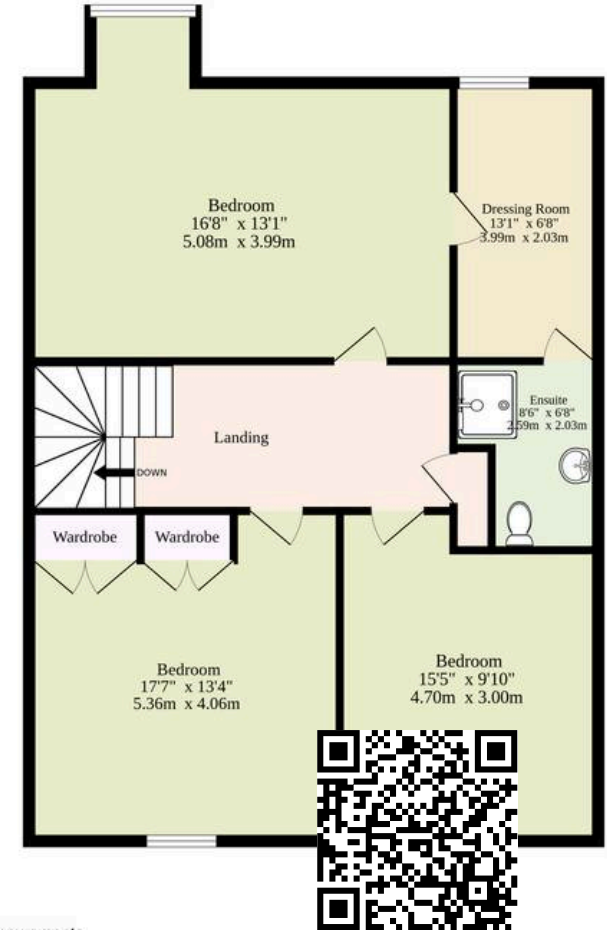
Ground Floor
868 sq.ft. (80.6 sq.m.) approx.



1st Floor
868 sq.ft. (80.6 sq.m.) approx.



2nd Floor
885 sq.ft. (82.2 sq.m.) approx.



TOTAL FLOOR AREA : 2621 sq.ft. (243.5 sq.m.) approx.

Whilst every attempt has been made to ensure the accuracy of the floorplan contained here, measurements of doors, windows, rooms and any other items are approximate and no responsibility is taken for any error, omission or mis-statement. This plan is for illustrative purposes only and should be used as such by any prospective purchaser. The services, systems and appliances shown have not been tested and no guarantee as to their operability or efficiency can be given.

Made with Metropix ©2025

