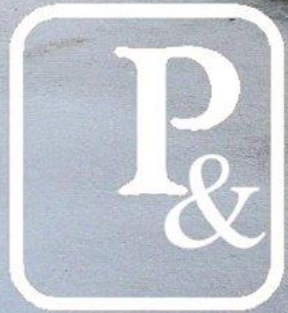




Palmer & Partners



Palmer & Partners

The Street, Wenhaston, Suffolk, IP19 9EF

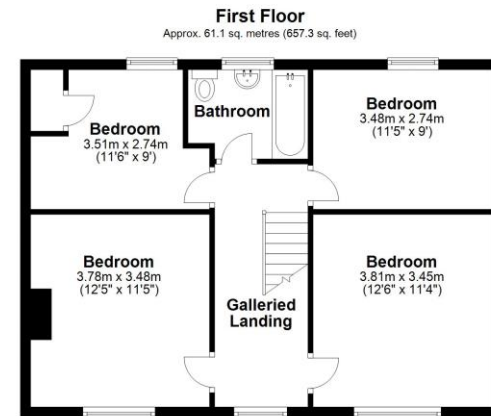
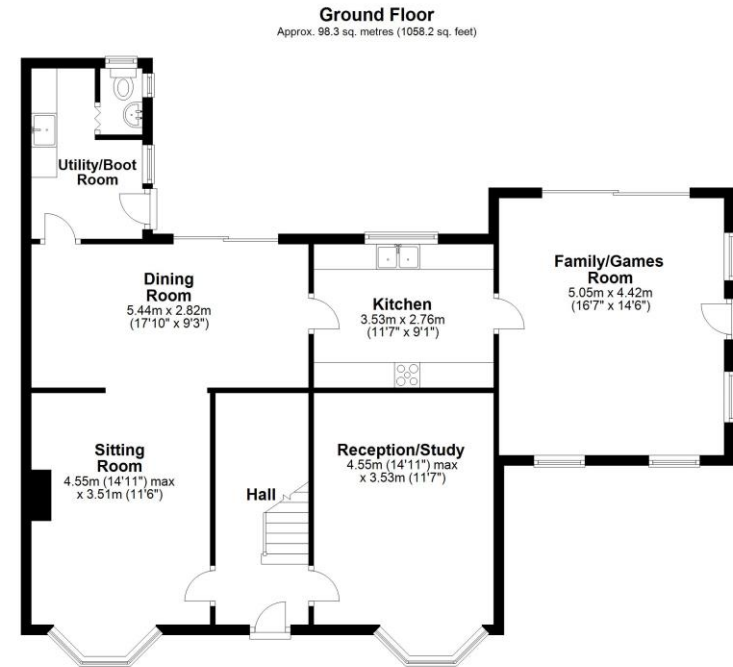
GP: £650,000 to £685,000

Heatherbank, The Street, Wenhaston, Halesworth, Suffolk, IP19 9EF

This impressive extended double-fronted Edwardian property, situated in the idyllic village of Wenhaston, occupies a very generous plot with a stunning rear garden, we believe, to be approximately one third of an acre (subject to survey) and backs onto Wenhaston Common. This substantial detached family home provides sizable and very versatile living accommodation, is full of character retaining many original features, and benefits from double-width driveway providing off-road parking, double glazing, and oil fired central heating.

As agents, we recommend the earliest possible internal viewing to fully appreciate the size of the accommodation on offer which comprises entrance hallway, sitting room with multi-fuel burner, second reception with open fireplace, dining room, magnificent triple aspect family / games room, kitchen, utility / boot room, ground floor cloakroom, galleried landing, four good size double bedrooms, and family bathroom.

Wenhaston is a pretty village situated to the south of the River Blyth in northeastern Suffolk with the area to the east of Wenhaston designated as an Area of Outstanding Natural Beauty rolling down towards the coastal estuary of the Blyth. The village has an array of amenities including a shop, post office, café, village hall, public house, sports club, primary school and a mobile library which comes round every fortnight. The nearby town of Halesworth has a train station with direct links to London Liverpool Street station and the coastal town of Southwold has a beautiful beach and quaint shops.



Total area: approx. 159.4 sq. metres (1715.5 sq. feet)
Although every attempt has been made to ensure the accuracy of this floorplan measurements of doors, windows, rooms and any other items are approximate and no responsibility is taken for any error, omission or mis-statement. This plan is for illustrative purposes only.
Plan produced using PlanUp.



