



Acton Lane, London, W4 5DD

£565,000

WHITMAN & CO.

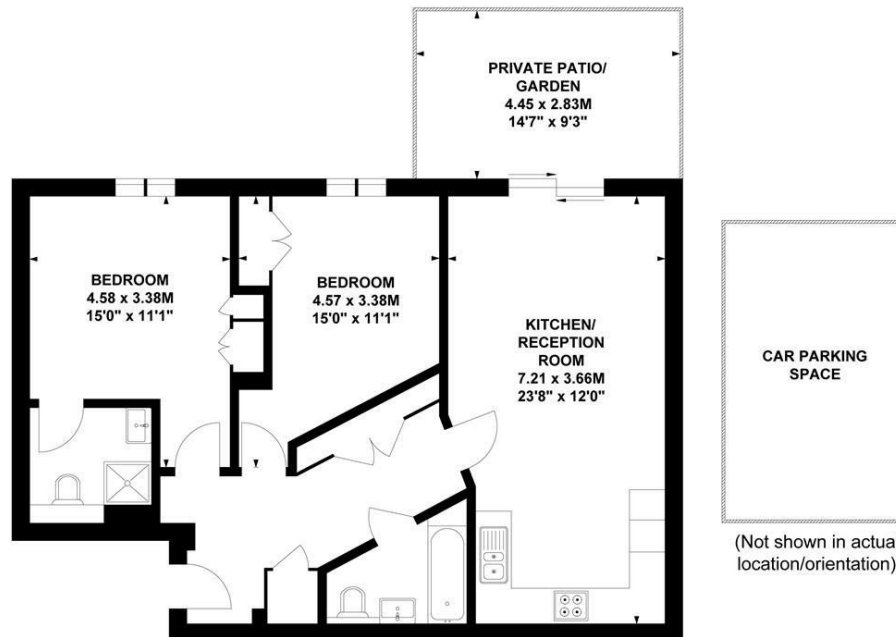
SALES · LETTINGS · COMMERCIAL

- Gated boutique development
- Private patio garden
- Immaculately presented
- Two-bedroom flat
- Allocated off-street parking
- No onward chain

Tenure - Leasehold
 Lease length - 160 Years remaining
 Ground rent - £200 pa
 Service charge - £2,500 pa
 Local authority - Ealing
 Council tax - Band C

Acton Lane, W4

Approximate Gross Internal Area
 69.9 sq m / 752 sq ft



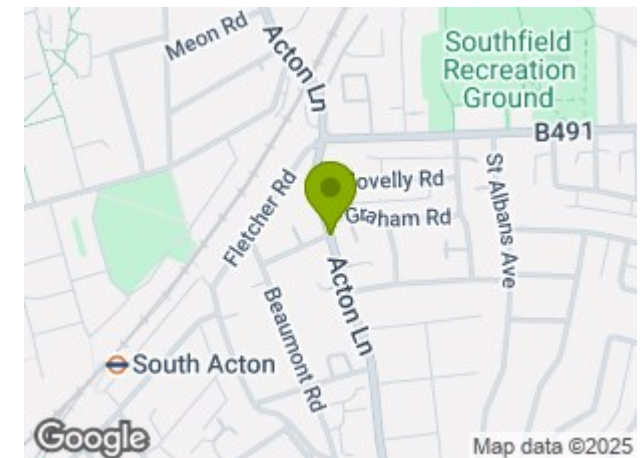
Ground Floor

Not to scale, for guidance only and must not be relied upon as a statement of fact.
 All measurements and areas are approximate only

THE PROPERTY

An immaculately presented two-bedroom flat set within this gated boutique development, benefiting from a private patio garden and allocated off-street parking. The property features a master suite, a second double bedroom, a luxury bathroom, a spacious 23' reception room, a fully integrated kitchen, a utility cupboard, and built-in wardrobes. Ideally situated within close proximity to numerous transport links and the extensive range of shops, bars, and restaurants on Chiswick High Road. No onward chain.

SITUATION



5-7 Turnham Green Terrace, Chiswick, London, W4 1RG

Tel 020 8747 8800

E-mail sales@whitmanandco.com

Website www.whitmanandco.com