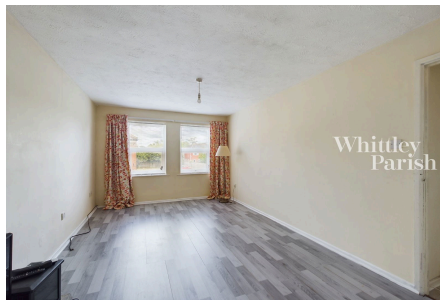
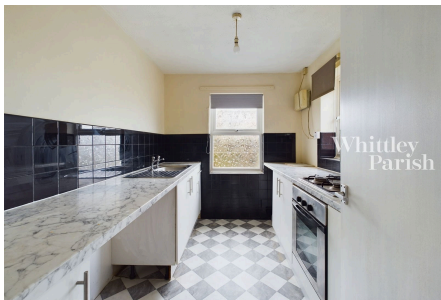


# Louies Lane, Diss

Guide Price £110,000 - £120,000

1 1 1



A one bedroom first floor flat with an allocated parking space being sold with no onward chain.

## Key Features

- Guide Price £110,000 - £120,000
- Popular location
- One allocated parking space
- Share of freehold
- Council Tax Band A
- First floor apartment
- Less than 1 mile to amenities
- Double glazed windows
- EPC Rating D
- Electric heating - Mains drainage

