



Whittlebury Mews East, London **NW1 8EQ**

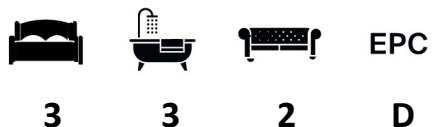
**WAYNE
& SILVER**

Whittlebury Mews East, London NW1 8EQ

Set within a gated development of just 4 houses and with secure underground parking is this striking, contemporary three bedroom town house located in the heart of Primrose Hill.

The house offers spacious living accommodation throughout (approx. 2,391 sq ft / 222 sq m) and is arranged over four floors with a stunning glazed atrium hallway and floor to ceiling windows on each floor giving an amazing feel of light and space. The ground floor comprises a large reception room and a guest WC, whilst downstairs there is a spacious study area that leads onto both the downstairs patio and the large open plan kitchen/dining area that is perfect for entertaining. There is also a utility room on this floor. There are two double bedroom suites on the first floor and a third bedroom suite on the top floor with access to a small terrace.

Close by transport links include Chalk Farm Underground Station (Northern Line) as well as being a short walk to the open spaces of Primrose Hill Park and Regents Park. Photographs are as previously furnished.



Guide price: £1,900,000

Tenure: Leasehold - Share of Freehold

Service Charge: Add text here

Local Authority: Camden

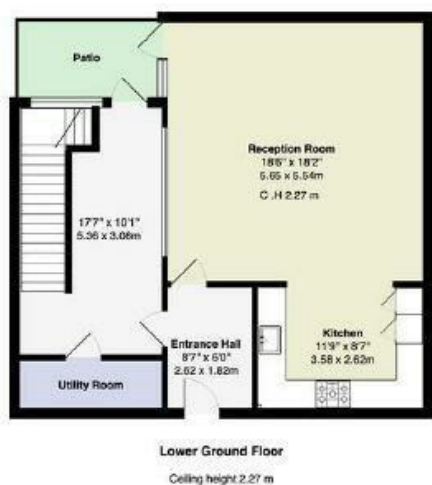
Council Tax Band: G











Whitebury Mews East, NW1
Total Gross Area: 2391 sq ft ... 222.1 m²
All measurements are approximate and for identification purposes only, not to scale.
Compliant with the RICS code of measuring practice.

41 Heath Street
Hampstead
London
NW3 6UA

wayne-silver.com

We would be delighted to tell you more
020 7431 4488
info@wayne-silver.com

Important Notice: Wayne & Silver, its clients and any joint agents give notice that 1: They are not authorised to make or give any representations or warranties in relation to the property either here or elsewhere, either on their own behalf or on behalf of their client or otherwise. They assume no responsibility for any statement that may be made in these particulars. These particulars do not form part of any offer or contract and must not be relied upon as statements or representations of fact. 2: Any areas, measurements or distances are approximate. The text, photographs and plans are for guidance only and are not necessarily comprehensive. It should not be assumed that the property has all necessary planning, building regulation or other consents and Wayne & Silver have not tested any services, equipment or facilities. Purchasers must satisfy themselves by inspection or otherwise.